

Privacy Settings

We use cookies to optimize our website and our service.

- ☒ Functional
- ☒ Statistics
- ☒ Marketing

Save

Functional only

Accept all



Primo Piano LivinGallery – Progetti e Servizi per la Cultura e l'Arte Contemporanea is the Italian events industry's first business network, created by professionals specialised in visual arts, site specific installations, symposium, advisor board, incentive projects and shipping, art and theatre productions, portfolio artists over the world and more. They have worked with national and international private and public institutions since 1994.

They also support organisations in all the regions of Italy and especially in Lecce, the Baroque city, with magnificent location situated in the heart of the city. Their focus is to create proposals for authentic, inspiring and life-enriching experiences while rendering excellent quality services.

contemporary art thanks to conferences, artist interviews, curator talks, films, and more. Visit also the website <http://primopianoatelier.com/?lang=en>

SIMILAR CONTENT

POSTED ON
27 AUG 2013

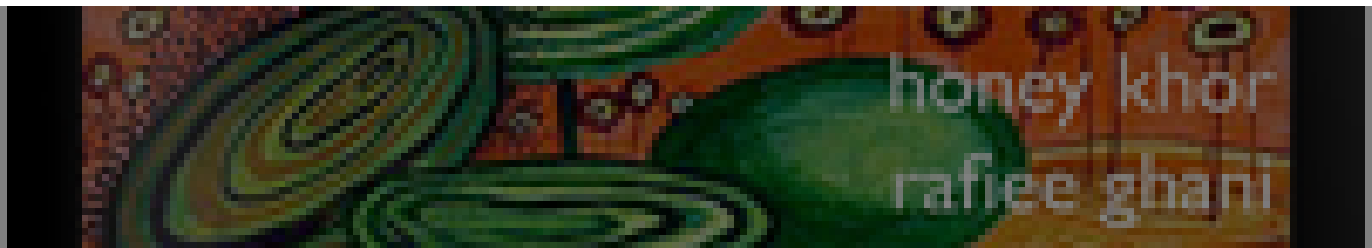
Capital E



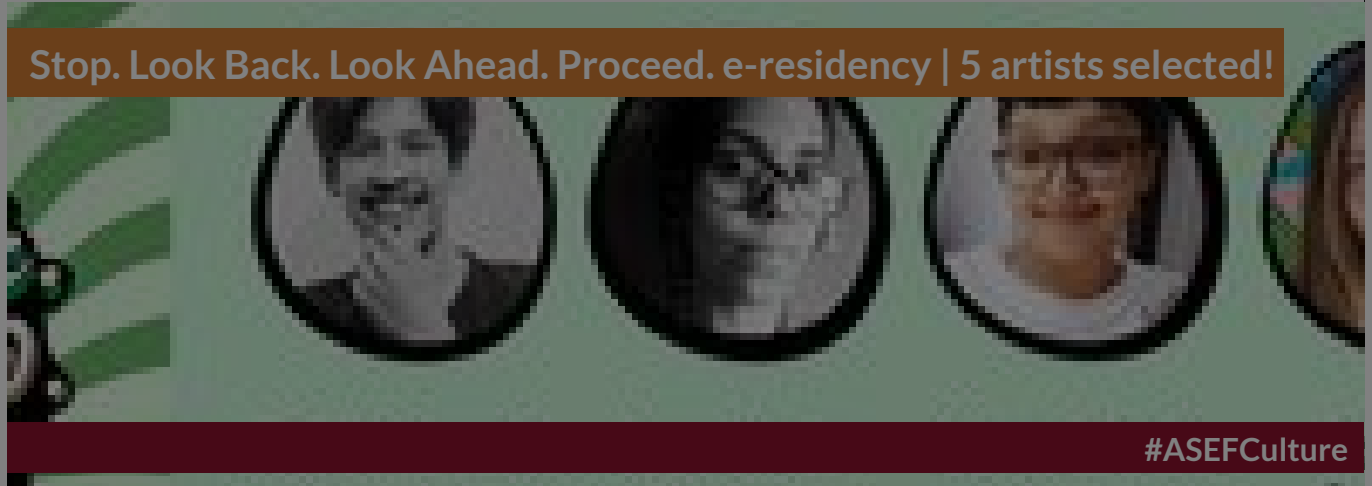
ORGANISATIONS DIRECTORY
NEW ZEALAND

POSTED ON
05 MAR 2012

Dusun | Malaysian arts and culture magazine

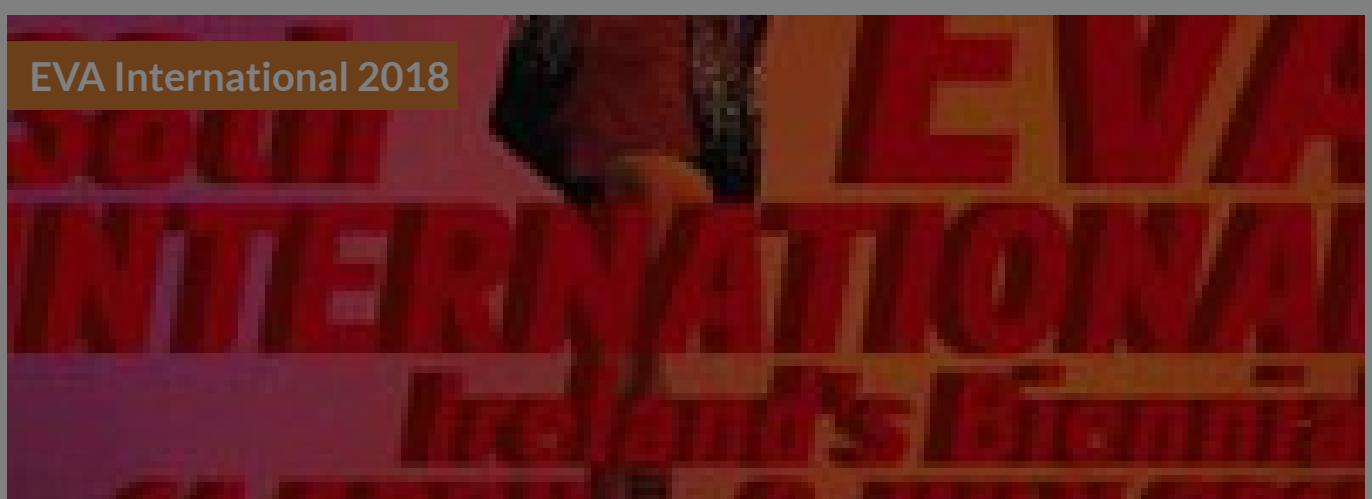


POSTED ON
29 JUL 2022



NEWS
CHINA INDIA INDONESIA SPAIN

FROM - TO
14 APR 2018 - 08 JUL 2018



EVENTS
INTERNATIONAL IRELAND

BY MASUMA HALAI KHWAJA
19 FEB 2018

Reel On Hai | A Public Outreach Project of the Karachi Biennale 2017



FEATURES
PAKISTAN

POSTED ON
16 APR 2012

Call to Create | global network for young people's creativity

REACT

NEWS
INTERNATIONAL UNITED KINGDOM

WEBSITE
[HTTPS://WWW.PRIMOPIANO GALLERY.COM/EN/LANDINGPAGE/INTRO-2/](https://www.primopianogallery.com/en/landingpage/intro-2/)

COUNTRY
ITALY

THEME
CULTURAL MANAGEMENT

ABOUT ASEF CULTURE360

culture360.asef.org brings Asia and Europe closer by providing information, facilitating dialogue and stimulating reflection on the arts and culture of the two regions.

MORE ABOUT ASEF CULTURE360 | [FAQ](#) | [f](#) [X](#) [@](#)

This website was created and maintained with the financial support of the European Union. Its contents are the sole responsibility of the Asia-Europe Foundation (ASEF) and do not necessarily reflect the views of the European Union.



[About us](#)

[Team](#)

[Partners](#)

[FAQ](#)

[Brand guidelines](#)

[How to partner with us](#)

[Contact us](#)

[#ASEFCulture](#)

ASIA-EUROPE FOUNDATION (ASEF) 2017 | [TERMS OF SERVICE & PRIVACY POLICY](#) | [CREATIVE COMMONS
ATTRIBUTION - NON COMMERCIAL SHARE](#)