

Privacy Settings

We use cookies to optimize our website and our service.

- ☒ Functional
- ☒ Statistics
- ☒ Marketing

Save

Functional only

Accept all

WEBSITE
[HTTP://WWW.MCA.COM.AU/](http://www.mca.com.au/)

COUNTRY
[AUSTRALIA](#)

THEME
[MUSEUMS](#)

DISCIPLINE
[VISUAL ARTS](#)

MCA

The Museum of Contemporary Art (MCA) is dedicated to **exhibiting, collecting and interpreting the work of today's artists.**

Located on one of the world's most spectacular sites on the edge of Sydney Harbour, the Museum of Contemporary Art opened its doors to the public in 1991. Established through a bequest by Australian expatriate artist John Power (1881-1943), who left his personal fortune to the University of Sydney to inform and educate Australians about international contemporary visual art, the MCA is dedicated to exhibiting, collecting and interpreting contemporary art.

The vision of the founding Director Leon Paroissien and Chief Curator Bernice Murphy was manifest from its earliest years – a commitment to innovative programming with ground-breaking **exhibitions of contemporary art from Australia, the Asia Pacific region and around the world.** A strong emphasis on making the MCA a museum that engages artists with audiences led to a programme of significant solo shows by Australian and international artists as well as thematic and group exhibitions. The MCA is a **major partner of the Biennale of Sydney.** The MCA also sought to engage with audiences beyond the building by developing a programme of touring exhibitions and C3West, a collaboration with galleries and non-arts partners in Western Sydney.

Similar content

POSTED ON
21 SEP 2016

Museum of
Contemporary Art
Australia - Qantas - Tate
collaboration



POSTED ON
06 JUN 2011

Tell Me Tell Me |
Australian and Korean
Art 1976-2011



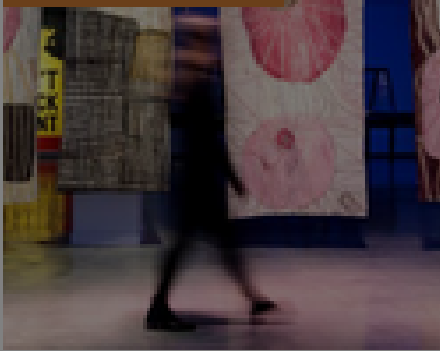
POSTED ON
15 MAY 2012

Art Gallery NSW



POSTED ON
15 JUN 2020

22nd Biennale of
Sydney re-opens with
extended dates



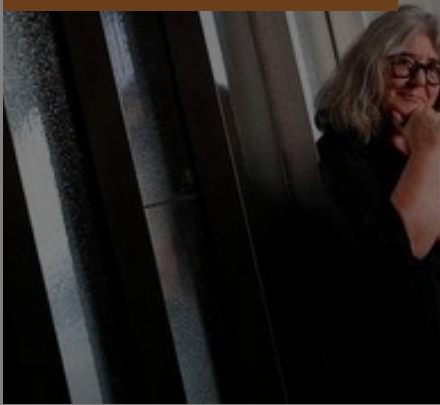
POSTED ON
15 MAY 2012

Sydney Opera House



POSTED ON
04 MAR 2015

Australian art director
moves to Aarhus ECoC



ABOUT ASEF CULTURE360

culture360.asef.org brings Asia and Europe closer by providing information, facilitating dialogue and stimulating reflection on the arts and culture of the two regions.

[MORE ABOUT ASEF CULTURE360](#) | [FAQ](#)

