

Privacy Settings

We use cookies to optimize our website and our service.

- ☒ Functional
- ☒ Statistics
- ☒ Marketing

Save

Functional only

Accept all

The Morning After | British Council reflects on
UK's cultural relationships in Europe



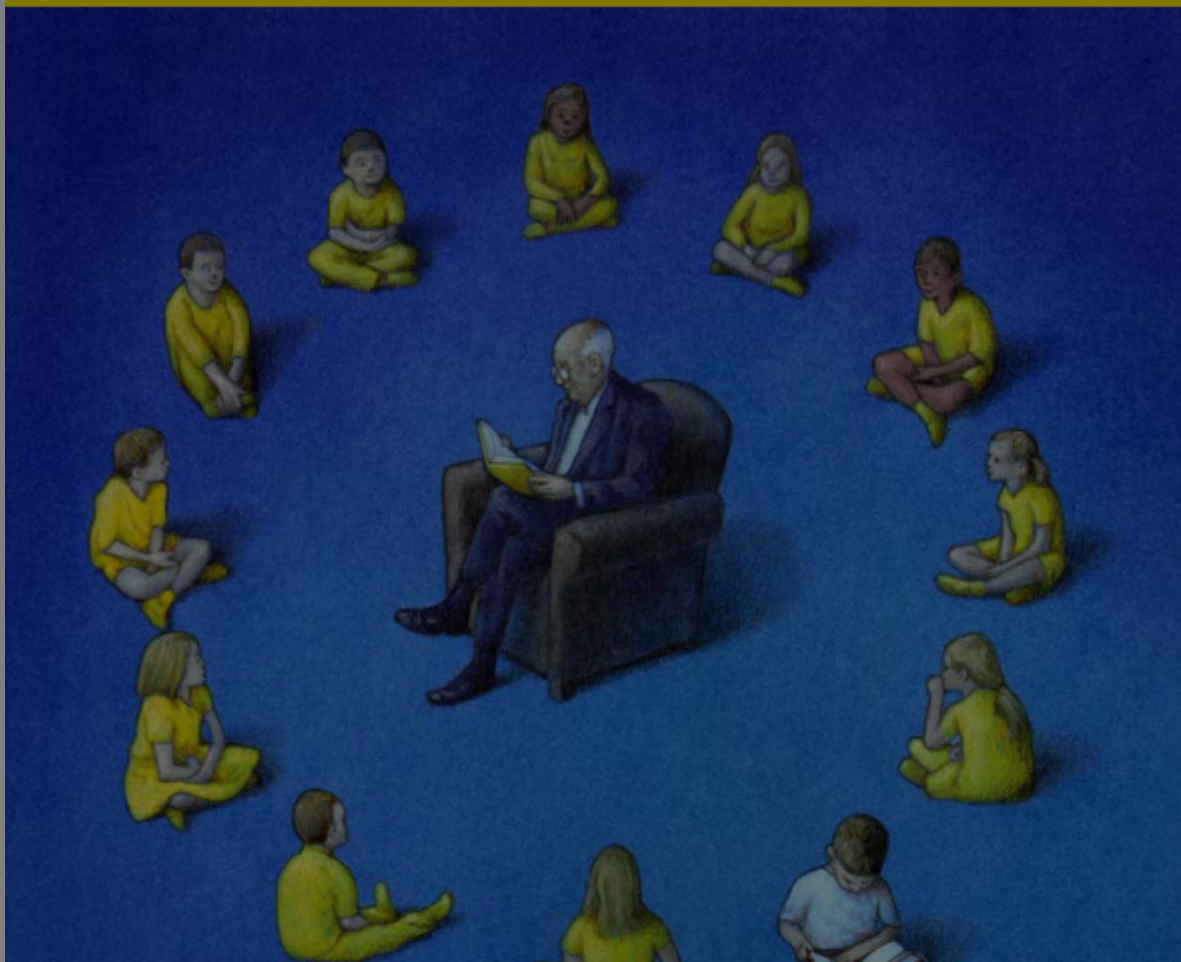
The morning after

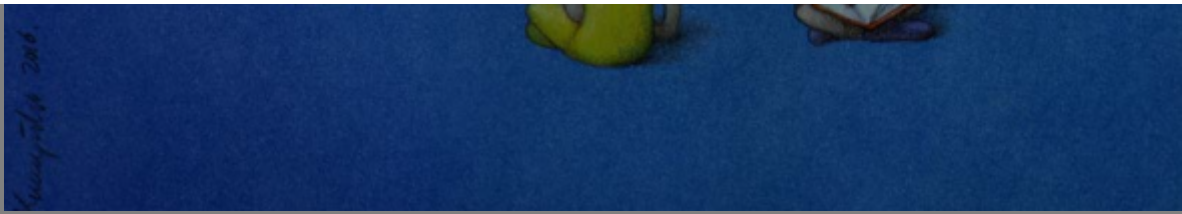
The future of the UK's cultural relationship with other European nations



The Morning After:

The future of the UK's cultural relationship with other European nations





On 23rd June the people of the UK made the historic decision to leave the European Union. Ahead of the referendum the British Council commissioned this **collection of essays** by prominent people working in a wide variety of cultural sectors. They offer an insight into the historic, social, artistic, scientific and educational connections between the UK and other European countries, and a reflection on how these might be shaped in years to come.

The British Council asked the authors to write about their own experience, and reflect more broadly on the value of culture as an enduring force of attraction within and beyond Europe. Commissioned artwork offers a wry commentary on the UK's 'European question': the cover illustration suggesting an urgent need for (re) engagement with our neighbours.

The title of the collection – The Morning After – is intended to suggest that the UK is now presented with an opportunity to take stock of its relationships with other European countries, and reconsider its cultural connections with people across the continent.

The British Council is the UK's national body dedicated to building international understanding. We believe that given the result of the United Kingdom's referendum on EU membership, the cultural connection between the UK and other European nations will remain vital, and can help to build confidence and trust in whatever political and economic settlement is finally reached.

We are a global organisation, with operations around the world, but our roots are European – we were created as part of the UK's response to the rise of Fascism in the 1930s.

Like weather fronts and migrating swallows, culture and ideas are not stopped by border posts or passport regulations. That should be a cause for celebration, and a comfort at a time of great uncertainty and change.

Whatever course political events may take over the coming months and years, Europe will remain a place of cultural exchange for all of us, as it has been for millennia.

"...as a cultural union, Europe is unrivalled. The United Kingdom – and London – is the beating heart of this Europe that I know and love.." - Martin Roth, Director, Victoria and Albert Museum

Read the British Council essays about the UK-Europe relationship by cultural figures: <http://bit.ly/UKEUCulture1> | [#UKEUCulture](https://twitter.com/UKEUCulture)

SIMILAR CONTENT

POSTED ON
06 SEP 2010

British Council Japan

ORGANISATIONS DIRECTORY
JAPAN UNITED KINGDOM

POSTED ON
15 MAY 2012

British Council Australia

ORGANISATIONS DIRECTORY
AUSTRALIA UNITED KINGDOM

POSTED ON
07 SEP 2010

British Council Poland

BY **KERRINE GOH**
08 JUL 2007

The Future Of The Funding Of European Films



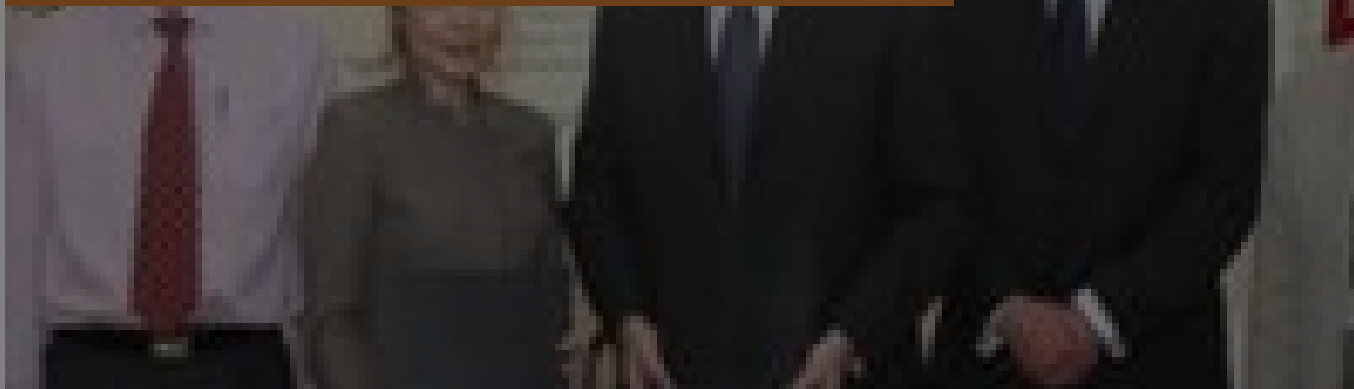
POSTED ON
24 JUN 2011

British Council

ORGANISATIONS DIRECTORY
INTERNATIONAL UNITED KINGDOM

POSTED ON
24 MAY 2011

Singapore - UK cross cultural partnership in the arts



NEWS

SINGAPORE UNITED KINGDOM

COUNTRIES

EUROPE UNITED KINGDOM

THEME

CULTURAL POLICY

ABOUT ASEF CULTURE360

culture360.asef.org brings Asia and Europe closer by providing information, facilitating dialogue and stimulating reflection on the arts and culture of the two regions.

MORE ABOUT ASEF CULTURE360 | [FAQ](#) | [f](#) [X](#) [@](#)

This website was created and maintained with the financial support of the European Union. Its contents are the sole responsibility of the Asia-Europe Foundation (ASEF) and do not necessarily reflect the views of the European Union.



About us
Team
Partners
FAQ
Brand guidelines
How to partner with us
Contact us
[#ASEFCulture](#)

