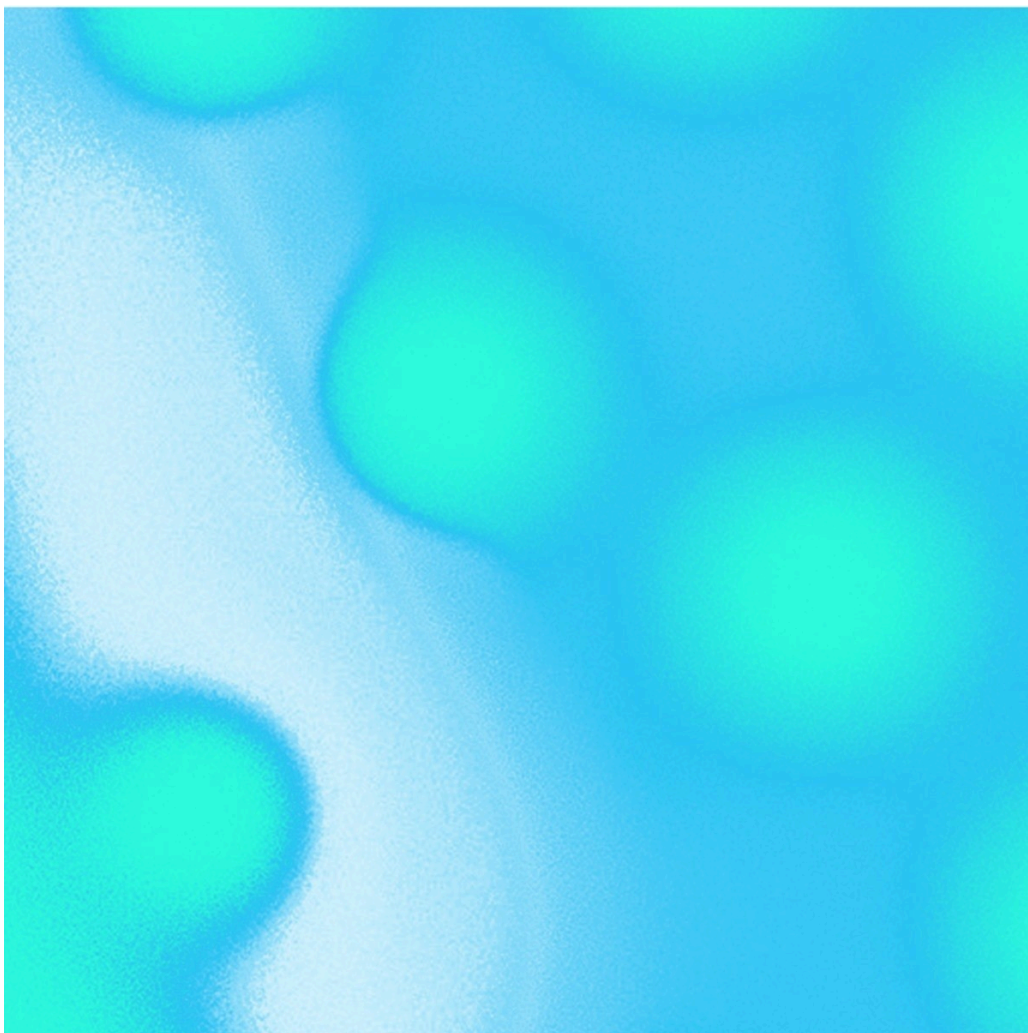

RESOURCES > Modulab

POSTED ON
28 NOV 2016

Modulab



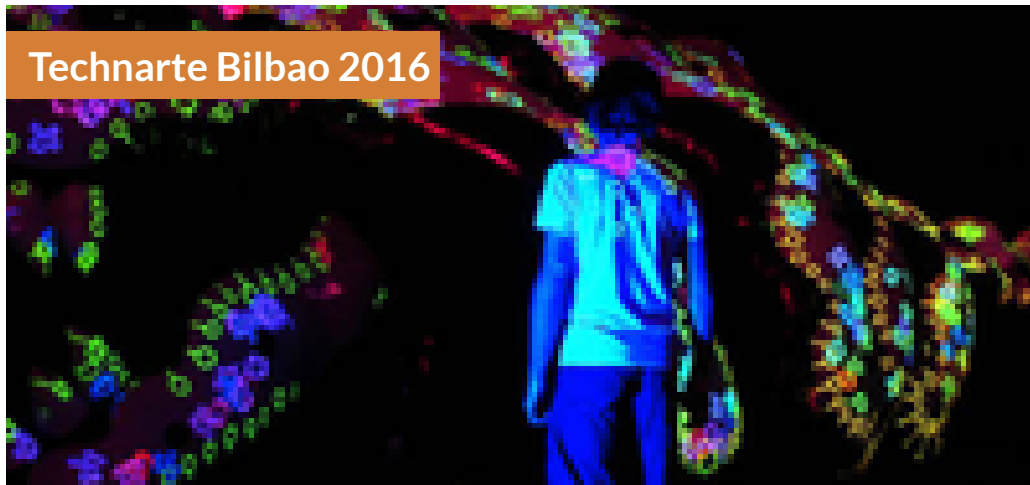
Modulab is a creative technology lab that explores the relationship between design, culture, society and media developing immersive experiences for a large scale audience through design and technology.

Since 2008, Modulab has produced a series of technology intensive installations, interactive surfaces and experimental displays based on

worldwide innovative solutions, most of which have been exhibited in local and international new media art venues. With over 10 years experience in **prototyping**, Modulab has developed several innovative products and solutions such as the first volatile medium projection, the first elastic multi-touch surface and other in-house innovative projects. The studio experiments with **humanoid robots**, making its own version of Inmoov, and swarm robots. Since 2016 Modulab is the top of mind in **interactive installations for museums, festivals, immersive marketing campaigns and brand activations**, developing also **cultural events at the intersection of art, technology and science**.

SIMILAR CONTENT

FROM - TO
19 MAY 2016 - 20 MAY 2016




EVENTS
INTERNATIONAL SPAIN

FROM - TO
28 MAY 2015 - 29 MAY 2015



Technarte Conference on Art and Technology

DEADLINE
14 FEB 2023



Artists in Austria, Hungary, Italy and Romania for fake news project 2.0

OPEN CALLS
AUSTRIA HUNGARY ITALY ROMANIA

DEADLINE
02 MAR 2022



STARTS Prize 2022

OPEN CALLS
EUROPE INTERNATIONAL

FROM - TO
30 AUG 2024 - 07 SEP 2024

Asia-Europe Cultural Festival: 2024 | Biomodd [TT015]

LOGIES



#ASEFCulture

EVENTS
PHILIPPINES UNITED KINGDOM

POSTED ON
01 JUN 2011

Nanyang Technological University School of Art,
Design and Media



NANYANG TECHNOLOGICAL

ORGANISATIONS DIRECTORY
SINGAPORE

WEBSITE
[HTTPS://MODULAB.COM](https://modulab.com)

COUNTRY
ROMANIA

DISCIPLINES
NEW MEDIA VISUAL ARTS

ABOUT ASEF CULTURE360

culture360.asef.org brings Asia and Europe closer by providing information, facilitating dialogue and stimulating reflection on the arts and culture of the two regions.

MORE ABOUT ASEF CULTURE360 | [FAQ](#) | [f](#) [X](#) [@](#)

This website was created and maintained with the financial support of the European Union. Its contents are the sole responsibility of the Asia-Europe Foundation (ASEF) and do not necessarily reflect the views of the European Union.



About us
Team
Partners
FAQ
Brand guidelines
How to partner with us
Contact us
#ASEFCulture