

[RESOURCES](#) > Mobility Funding Guides | ASEAN Region Guides launched!

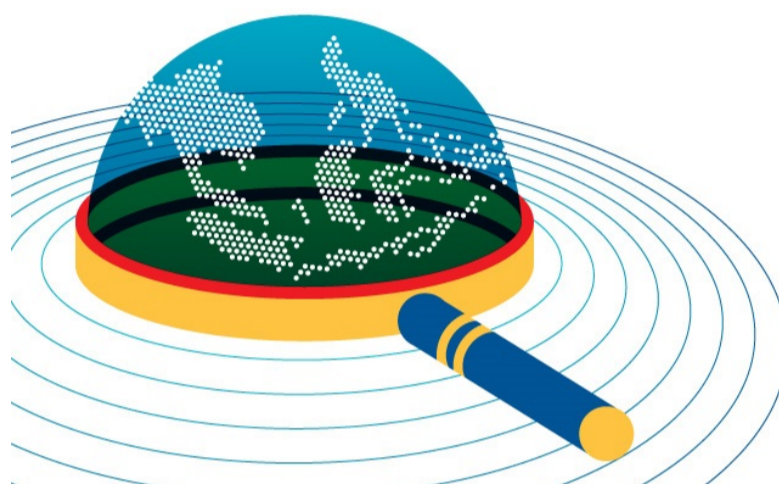
POSTED ON
27 MAR 2016

COUNTRIES
[ASIA](#) [EUROPE](#)

THEMES
[CREATIVE INDUSTRIES](#)
[CULTURAL MANAGEMENT](#)
[CULTURAL POLICY](#) [MOBILITY](#)

DISCIPLINES
[PERFORMING ARTS](#) [VISUAL ARTS](#)

Mobility Funding Guides | ASEAN Region Guides launched!



**Are you an artist or
a cultural professional?
Are you looking for funding
to attend a conference,
training or residency?**

Check out these Mobility Funding Guides
for the 10 countries of the ASEAN Region!

In conjunction with the 50th anniversary of the establishment of the [Association of Southeast Asian Nations \(ASEAN\)](#) in 2017, the [Asia-Europe Foundation \(ASEF\)](#) and [On the Move \(OTM\)](#) are launching the updated guides for the 10 countries of the ASEAN Region, namely **Brunei Darussalam, Cambodia, Indonesia, Lao PDR, Malaysia, Myanmar, the Philippines, Singapore, Thailand and Viet Nam**. In addition, an updated version of the [Focus on Asia Guide](#) is also published; **Focus on Asia** covers funding opportunities for the ASEM Asian member countries and is organised around different themes, including culture and development. This Guide is particularly useful for countries that do not have dedicated national sources of funding.

The publishing of the 10 Guides for the ASEAN region coincides with the launch of [Mobility First! ASEF Cultural Mobility Initiative](#) in recognition of existing funding gaps in this area, particularly in the Asia-Asia and Asia-Europe contexts. This initiative seeks to reaffirm the importance of face-to-face encounters not only in knowledge and experience sharing, but also in setting up long-term alliances and partnerships based on trust, reciprocity and fair exchange. Stay tuned for the upcoming call for proposals that will be launched in **April 2017**.

Since 2012, the [Asia-Europe Foundation \(ASEF\)](#) and [On the Move \(OTM\)](#) have jointly presented the *Mobility Funding Guides for International Cultural Exchange* in **51 countries** part of the [Asia-Europe Meeting \(ASEM\)](#). These guides provide a comprehensive and updated list of funding opportunities for the cultural mobility of artists and cultural practitioners in Asia and Europe, where cultural mobility is defined as “*the temporary cross-border movement of artists and other cultural professionals.*”

We invite you to read the download the Guides below as well as the [Preface](#) to this Edition and the handbook on [How to read the mobility funding guides](#).

~~~~~

Download the Guides at:

[culture360.ASEF.org/cultural-mobility](http://culture360.ASEF.org/cultural-mobility)

- [Credits 2016-2017 edition](#)
- [Preface to 2016-2017 Edition](#)
- [How to read the mobility funding guides](#)
- [Glossary on Cultural Mobility](#)

All European Guides are downloadable at: <http://on-the-move.org/funding/europe>

---

If you would like to know more about this initiative or collaborate with us, please contact:

Valentina RICCARDI (Ms)  
Project Manager, Culture Department - Asia-Europe Foundation (ASEF)  
[valentina.riccardi@asef.org](mailto:valentina.riccardi@asef.org)

You can also send your comments, suggestions and corrections to: [funding@culture360.org](mailto:funding@culture360.org)

#### HOW TO SHARE

You are welcome to share this publication on your website or blog.

When you share, we would appreciate if you could mention the following:

“The mobility funding guides were initiated by the Asia-Europe Foundation (ASEF) through its online portal [culture360.asef.org](http://culture360.asef.org)”

--

## Similar content

POSTED ON  
11 FEB 2018

Mobility Funding Guides for International Cultural Exchange in Asia and Europe

Check Mobility for 51 Asia and Europe

DOWN

<https://culture360.ASEF.org/cultural-mobility>

POSTED ON  
04 MAR 2019

Malaysia, new Mobility Funding Guide published

Check Mobility for 51 Asia and Europe

DOWN

<https://culture360.ASEF.org/cultural-mobility>

POSTED ON  
27 NOV 2018

New Mobility Funding Guides for Greece and Portugal launched

Check Mobility for 51 Asia and Europe

DOWN

<https://culture360.ASEF.org/cultural-mobility>

POSTED ON  
30 OCT 2019

New Mobility Funding Guide for Italy launched!

Check Mobility for 51 Asia and Europe

DOWN

<https://culture360.ASEF.org/cultural-mobility>

POSTED ON  
13 DEC 2018

New Mobility Funding Guide for Bangladesh launched

Check Mobility for 51 Asia and Europe

DOWN

<https://culture360.ASEF.org/cultural-mobility>

POSTED ON  
13 AUG 2018

Creative Responses to Sustainability | New Guide for Australia launched!

## **ABOUT ASEF** **CULTURE360**

[culture360.asef.org](http://culture360.asef.org) brings Asia and Europe closer by providing information, facilitating dialogue and stimulating reflection on the arts and culture of the two regions.

[MORE ABOUT ASEF CULTURE360](#) |  
[FAQ](#)



This website was created and maintained with the financial support of the European Union. Its contents are the sole responsibility of the Asia-Europe Foundation (ASEF) and do not necessarily reflect the views of the European Union.



[Browse our Network of museums in Asia and Europe](#)

ASIA-EUROPE FOUNDATION (ASEF) 2017 | [TERMS OF SERVICE & PRIVACY POLICY](#) | [CREATIVE COMMONS ATTRIBUTION - NON COMMERCIAL SHARE](#)

Help us improve your experience with [culture360.ASEF.org](http://culture360.ASEF.org)! [Take our 50 seconds survey!](#)