

Privacy Settings

We use cookies to optimize our website and our service.

- ☒ Functional
- ☒ Statistics
- ☒ Marketing

Save

Functional only

Accept all

WEBSITE
[HTTP://WWW.THE-MATCH-FACTORY....](http://www.the-match-factory.com)

COUNTRY
[GERMANY](#)

DISCIPLINE
[FILM](#)

The Match Factory presents international arthouse films by acclaimed directors and promising young talents, whose films distinguish themselves through originality and style. The company was founded in early 2006 by Michael Weber, Pandora Film's Reinhard Brundig and Karl Baumgartner.

The Match Factory's films received numerous awards on the most important film festivals. Amongst others, *Grbavica* by Jasmila Zbanic was honoured with the Golden Bear for Best Film at the Berlinale 2006. In 2007, Fatih Akin's *The Edge Of Heaven* was awarded with the Prix Du Scenario at the Festival de Cannes. *Waltz With Bashir* by Ari Folman won the Golden Globe® Best Foreign Language Film and was nominated for the Academy Award® Best Foreign Language Film in 2009. In 2010, *Ajami* by Scandar Copti and Yaron Shani and *The Milk Of Sorrow* by Claudia Llosa have been nominated for the Academy Award Best Foreign Language Film ® (Oscar), *Bal - Honey* by Semih Kaplanoglu was honoured with the Golden Bear at the Berlinale and Apichatpong Weerasethakul's *Uncle Boonmee Who Can Recall His Past Lives* was awarded with the Palm d'Or at Festival de Cannes.

The company also represents the entire library of Aki Kaurismäki.

Similar content

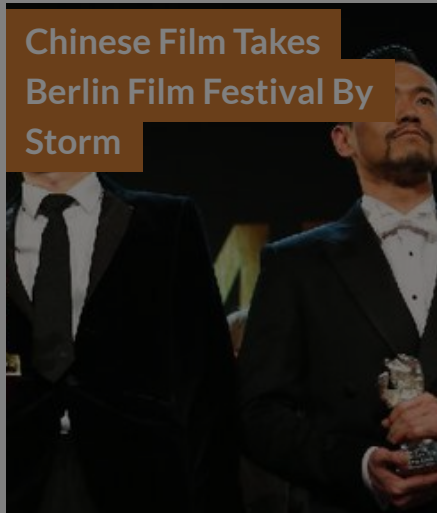
POSTED ON
25 DEC 2011

British Director leads
Berlinale 2012
International Jury



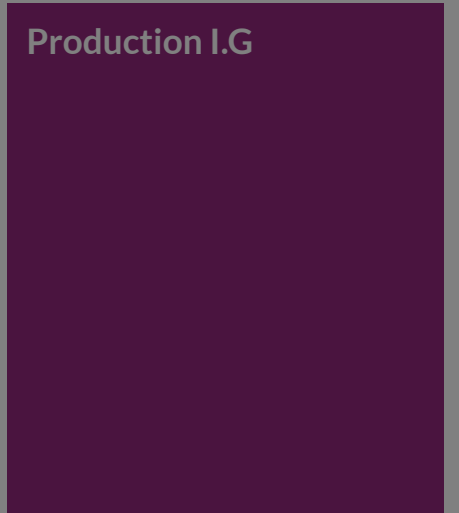
POSTED ON
17 FEB 2014

Chinese Film Takes
Berlin Film Festival By
Storm



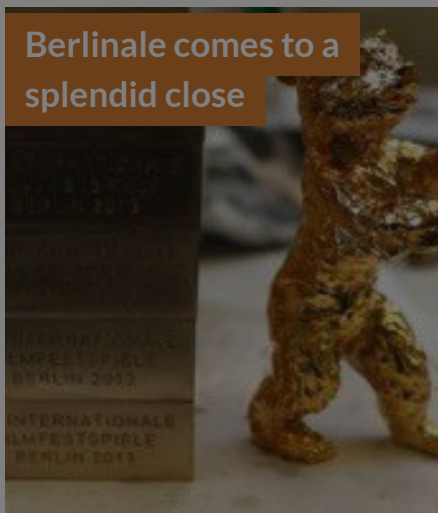
POSTED ON
02 JUN 2011

Production I.G



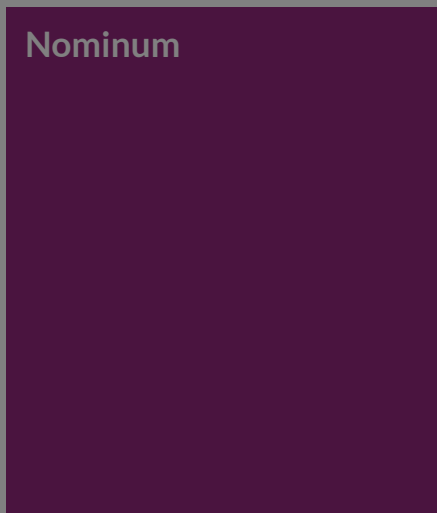
POSTED ON
17 FEB 2013

Berlinale comes to a
splendid close



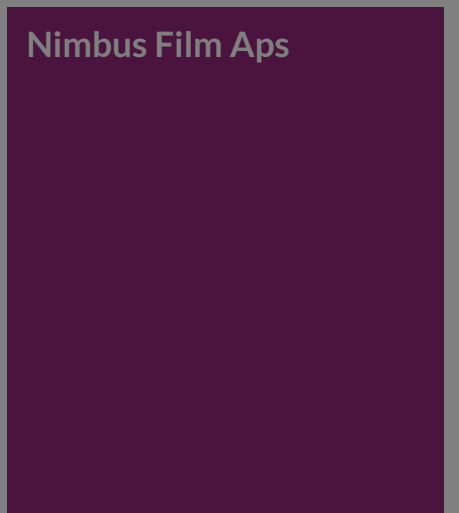
POSTED ON
22 MAY 2011

Nominum



POSTED ON
04 MAY 2011

Nimbus Film Aps



culture360.asef.org brings Asia and Europe closer by providing information, facilitating dialogue and stimulating reflection on the arts and culture of the two regions.

[MORE ABOUT ASEF CULTURE360](#) | [FAQ](#)

