

Privacy Settings

We use cookies to optimize our website and our service.

- ☒ Functional
- ☒ Statistics
- ☒ Marketing

Save

Functional only

Accept all

WEBSITE
[HTTPS://WWW.IASPM.NET](https://www.iaspm.net)

COUNTRY
[INTERNATIONAL](#)

DISCIPLINE
[MUSIC](#)

for the Study of Popular Music



International Association for the Study of Popular Music (IASPM) is an international organisation founded to **promote and support the field of popular music**. Since its establishment, the organisation has become an international network for people in the popular music community worldwide. The organisation organises many **conferences, publications and research projects** locally and internationally to create an understanding in popular music and its production and consumption process.

To build a large and diverse body of knowledge of popular music, IASPM is an organisation which is both interprofessional and interdisciplinary. It welcomes as members anyone involved with popular music. As popular music is as much a local as a global phenomenon, IASPM has emphasised since its very beginning an international perspective for research. Every two years, the Executive Committee invites the members to reflect on their plans and the results of academic and journalistic projects at an international conference.

Similar content

POSTED ON
26 JUN 2011

International
Association of Music
Information Centres

ian
nternational A
of Music Centr

POSTED ON
05 FEB 2019

22nd CHIME meeting,
Beijing - call for
presentations (Chinese
music)



POSTED ON
03 SEP 2010

Austrian Society for
Cultural Economics and
Policy Studies
(FOKUS)

05 FEB 2013

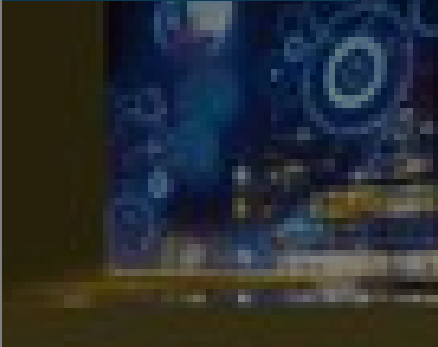
Brussels | The
Creators Conference

CREATORS CONFERENCE
SAVE THE DATE

A CONFERENCE ON MUSIC, TECHNOLOGY AND AUTHOR'S RIGHTS
19 - 20 FEBRUARY
THÉÂTRE DU VAUDEVILLE - BRUSSELS
www.creatorsconference

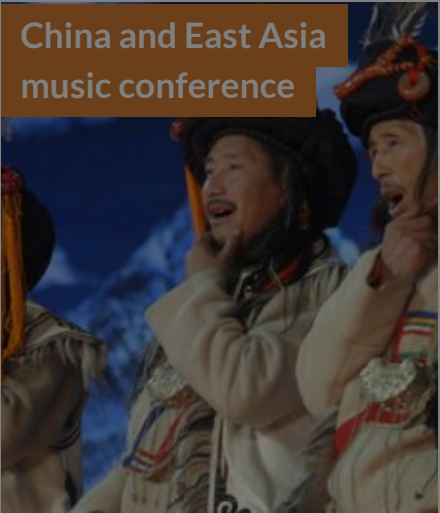
28 MAR 2011

WOMEX | call to world
music artists for
showcase proposals



01 JUN 2010

China and East Asia
music conference



ABOUT ASEF CULTURE360

culture360.asef.org brings Asia and Europe closer by providing information, facilitating dialogue and stimulating reflection on the arts and culture of the two regions.

[MORE ABOUT ASEF CULTURE360](#) | [FAQ](#)

