

RESOURCES > Integrated Performing Arts Guild

POSTED ON
04 JUL 2011

Integrated Performing Arts Guild



INTEGRATED PERFORMING ARTS GUILD

InspiringIPAG

Integrated Performing Arts Guild is a leading Philippine **dance and theater company** whose world acclaimed production integrates the **dance, music and arts tradition of the south, in Mindanao**. A recipient of various national awards and endowments that have acknowledged its contribution to contemporary Philippine Theater, it is a resident theatre company of the MSU, Iligan Institute of Technology.

With a repertoire of over 40 full-length productions performed in extensive tours nationally and abroad, IPAG has significantly contributed to Philippine National Theater. It is recognised as a leading Philippine theatre company today. Its productions have drawn much acclamation from critics and audiences. IPAG has developed a signature dance theater format based on the pangalay, an indigenous dance form that is the Philippines' closest claim to classical dance.

IPAG was founded in 1978 by its present Artistic Director Steven P.C. Fernandez and dance researcher Ligaya Fernando-Amilbangsa.

SIMILAR CONTENT

POSTED ON
08 SEP 2010



ORGANISATIONS DIRECTORY
PHILIPPINES

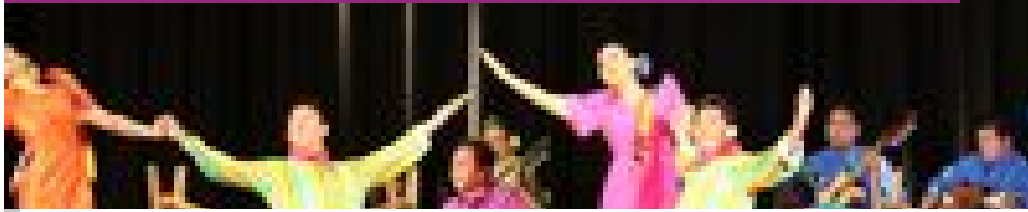
POSTED ON
08 SEP 2010



ORGANISATIONS DIRECTORY
PHILIPPINES

POSTED ON
30 JUN 2011

Philippine Bayanihan National Folk Dance Company



FROM - TO
15 AUG 2013 - 01 SEP 2013

Switzerland | Zürcher Theater Spektakel festival



EVENTS

ASIA INTERNATIONAL SWITZERLAND

POSTED ON
06 SEP 2010

The National Theater of Korea



ORGANISATIONS DIRECTORY
KOREA

POSTED ON
16 MAY 2011

National Federation of Theatre and Dance Business Associations

ORGANISATIONS DIRECTORY
SPAIN

WEBSITE

[HTTP://WWW.MSUIIT.EDU.PH/IPAG/](http://www.msuiit.edu.ph/ipag/)

COUNTRY

PHILIPPINES

DISCIPLINES

DANCE PERFORMING ARTS

ABOUT ASEF CULTURE360

culture360.asef.org brings Asia and Europe closer by providing information, facilitating dialogue and stimulating reflection on the arts and culture of the two regions.

MORE ABOUT ASEF CULTURE360 | [FAQ](#) | [f](#) [X](#) [@](#)

This website was created and maintained with the financial support of the European Union. Its contents are the sole responsibility of the Asia-Europe Foundation (ASEF) and do not necessarily reflect the views of the European Union.



About us
Team
Partners

FAQ

Brand guidelines

How to partner with us

Contact us

#ASEFCulture

ASIA-EUROPE FOUNDATION (ASEF) 2017 | [TERMS OF SERVICE & PRIVACY POLICY](#) | [CREATIVE COMMONS ATTRIBUTION - NON COMMERCIAL SHARE](#)