

## Privacy Settings

We use cookies to optimize our website and our service.

- ☒ Functional
- ☒ Statistics
- ☒ Marketing

Save

Functional only

Accept all

WEBSITE  
[HTTPS://WWW.LASALLE.EDU.SG/IN...](https://www.lasalle.edu.sg/in...)

COUNTRY  
[SINGAPORE](#)

THEME  
[MUSEUMS](#)

# Singapore, LASALLE College of the Arts



The [Institute of Contemporary Arts](#)

[\(ICA\) Singapore](#) is the curatorial division of LASALLE College of the Arts. Situated at LASALLE's dynamic city campus, the ICA Singapore's five galleries present a **programme of curated international exhibitions alongside exhibitions** organised with students, academic staff and alumni. The Institute provides curatorial expertise and resources in the areas of exhibition development, display and mediation, publishing and education, and manages the **LASALLE College of the Arts Collection of around 1000 items**. Through experimental art projects and publications, the institute fosters public appreciation, debate and critical engagement with contemporary art. Projects are realised in close collaboration with artists. They reflect **Southeast Asia's cultural diversity, and connect with new directions in international art**. Founded as the Dr Earl Lu Gallery in 1986, the ICA Singapore is committed to exchange between artists and LASALLE students. Throughout its history, the ICA Singapore has presented **landmark exhibitions**. These include 'Text & subtext' (2000), one of the first exhibitions to analyse works by contemporary Asian women artists; 'Site + sight: Translating cultures' (2002); and major solo exhibitions by Roberto Chabet (2011), Tang Da Wu (2013), Zai Kuning (2014), Marco Fusinato (2015), Ana Prvački (2015), Jack Tan (2016) and Jason Lim (2018). In recent years, the ICA Singapore has partnered with Palais de Tokyo (2015), Museum of Contemporary Art Lyon (2015) and the Singapore Biennale (2013 and 2016) on international curatorial projects with artists from Europe and Southeast Asia. **Permanent collections:** The diverse LASALLE Collection reflects the beliefs and interests of the College's founders and earliest advocates. Today, it represents the dynamics of exchange and collaboration that have characterised LASALLE since its establishment. It includes works of art by **artists from outside Asia** who have been closely associated with the College, either as teachers or students, administrators or visiting artists. The collection also intersects with the gallery's programme, especially during the directorship of Binghui Huangfu (1996–2003), when works of art were acquired from exhibitions of Asian contemporary art. Today, **the strength of the collection is Southeast Asian painting**, including Chinese ink painting. Highlights include works by Cheong Soo Pieng, Chen Wen Hsi, Chua Ek Kay, Goh Beng Kwan, Lim Cheng Hoe, Seah Kim Joo, Tay Bak Koi, Chieu Shuey Fook, Milenko Prvacki, Cai Heng, Ye Shufang, Eric Chan, Ding Yanyong, Gywe U Lun, Sutee Kunichayanont, Pinaree Sanpitak, Manit Sriwanichpoom, Thaweesak Srithongdee, Vincent Paul Padilla, Huang Binhong, Zhang Daqian, Jogen Chowdhury and Sunil Das. The collection of artefacts, obtained through gift or purchase by LASALLE, includes **early ceramic and porcelain ware** originating from various historical periods in different parts of Asia. The third major group of works includes **sculptures** by the founder of LASALLE, Brother Joseph McNally, and outdoor sculptures by artists such as Elsie Yu.

*View all Asia-Europe Museum Network (ASEMUS) members in [Singapore](#)*

## Similar content

POSTED ON  
17 OCT 2011

POSTED ON  
13 JAN 2016

POSTED ON  
29 NOV 2011



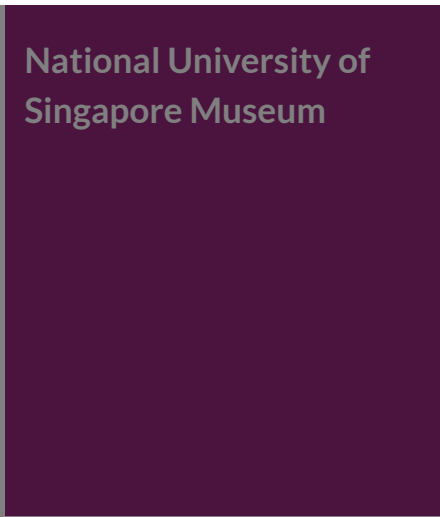
In conversation with  
Charles Merewether

POSTED ON  
23 AUG 2016



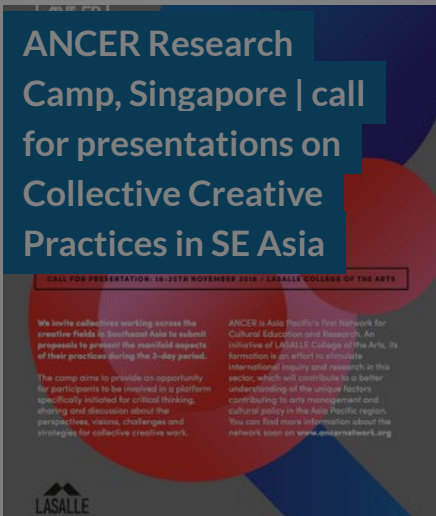
Singapore | Beneath  
the Moon co-  
production

POSTED ON  
21 JAN 2015

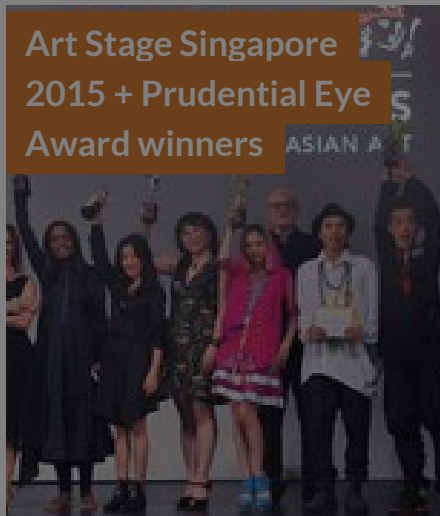


National University of  
Singapore Museum

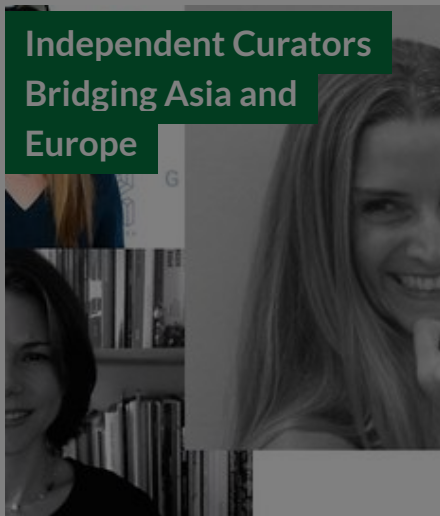
POSTED ON  
15 JAN 2018



ANCER Research  
Camp, Singapore | call  
for presentations on  
Collective Creative  
Practices in SE Asia



Art Stage Singapore  
2015 + Prudential Eye  
Award winners



Independent Curators  
Bridging Asia and  
Europe

## ABOUT ASEF CULTURE360

[culture360.asef.org](http://culture360.asef.org) brings Asia and Europe closer by providing information, facilitating dialogue and stimulating reflection on the arts and culture of the two regions.

[MORE ABOUT ASEF CULTURE360](#) | [FAQ](#)

