

## Privacy Settings

We use cookies to optimize our website and our service.

- ☒ Functional
- ☒ Statistics
- ☒ Marketing

Save

Functional only

Accept all



The Indonesian Dance Festival takes place in Jakarta 1-9 June with performances and workshops from Indonesia, Japan, Cambodia, France, Germany, Netherlands and Vietnam.

There will also be street performances and an International Seminar. Indonesian Dance Festival also invites everybody to join the **INDONESIA MENARI Flash Mob** on Sunday June 13th 2012 at 8.00 am at Bundaran Hotel Indonesia, Jakarta. It will involve 1000 dancers, Ondel-Ondel troupe, Abang None (DKI Jakarta) will be dancing Tari Nandak Betawi, Dewi Gita will be singing and dancing, and our City governor Fauzi Bowo. IDF is encouraging everyone to join and dance with us in the flashmob.

---

## SIMILAR CONTENT

FROM - TO

13 NOV 2013 - 16 NOV 2013

Indonesia Performing Arts Market 2013

INDONESIA  
PERFORMING  
ARTS MARKET

EVENTS

AUSTRALIA INDONESIA INTERNATIONAL

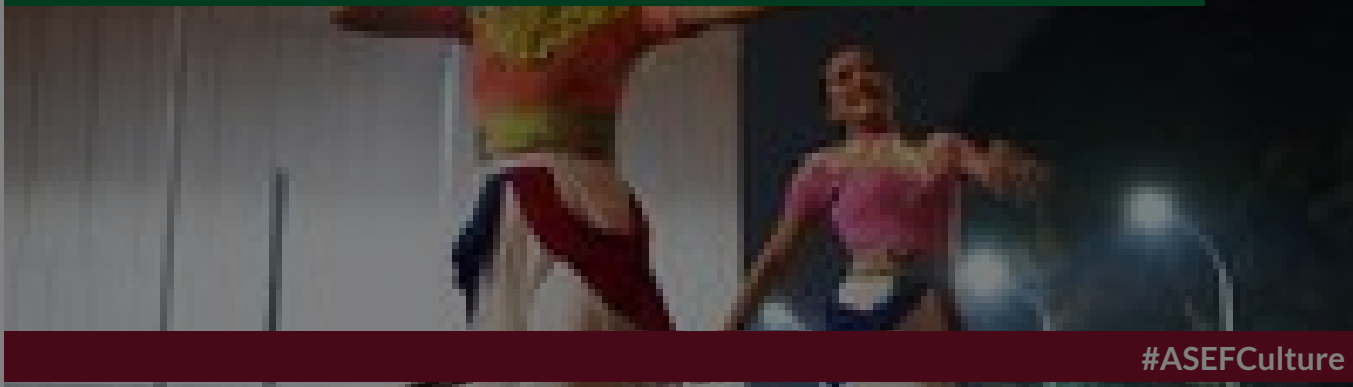
BY JORDI BALTÀ PORTOLÉS

25 MAY 2015

Museum Tekstil Jakarta, Indonesia

BY NUR ASHIKIN ALI  
13 DEC 2022

## Indonesian Dance Festival 2022 | Interview with Ratri Anindyajati



#ASEFCulture

INSIGHTS  
INDONESIA

BY VALENTINA RICCARDI  
12 NOV 2015

## German Season in Indonesia | Interview with Heinrich Blömeke, Director Goethe Institut



FEATURES  
GERMANY INDONESIA

BY SASIWIMON WONGJARIN  
16 MAR 2011

## Performing arts and cultural dialogue



#ASEFCulture

FROM - TO  
22 OCT 2022 - 28 OCT 2022

## culture360 Media Partnership | Indonesian Dance Festival 2022



#ASEFCulture

EVENTS  
INDONESIA

WEBSITE  
[HTTP://WWW.INDONESIANDANCEFESTIVAL.ORG/ARTICLE/VIEW/35](http://www.indonesiandancefestival.org/article/view/35)

COUNTRY  
INDONESIA

DISCIPLINES  
DANCE FESTIVALS

### ABOUT ASEF CULTURE360

[culture360.asef.org](http://culture360.asef.org) brings Asia and Europe closer by providing information, facilitating dialogue and stimulating reflection on the arts and culture of the two regions.

**MORE ABOUT ASEF CULTURE360 | [FAQ](#) | [f](#) [X](#) [@](#)**

This website was created and maintained with the financial support of the European Union. Its contents are the sole responsibility of the Asia-Europe Foundation (ASEF) and do not necessarily reflect the views of the European Union.



[About us](#)  
[Team](#)  
[Partners](#)  
[FAQ](#)  
[Brand guidelines](#)  
[How to partner with us](#)  
[Contact us](#)  
[#ASEFCulture](#)

ASIA-EUROPE FOUNDATION (ASEF) 2017 | [TERMS OF SERVICE & PRIVACY POLICY](#) | [CREATIVE COMMONS  
ATTRIBUTION - NON COMMERCIAL SHARE](#)