

Privacy Settings

We use cookies to optimize our website and our service.

- ☒ Functional
- ☒ Statistics
- ☒ Marketing

Save

Functional only

Accept all



idf

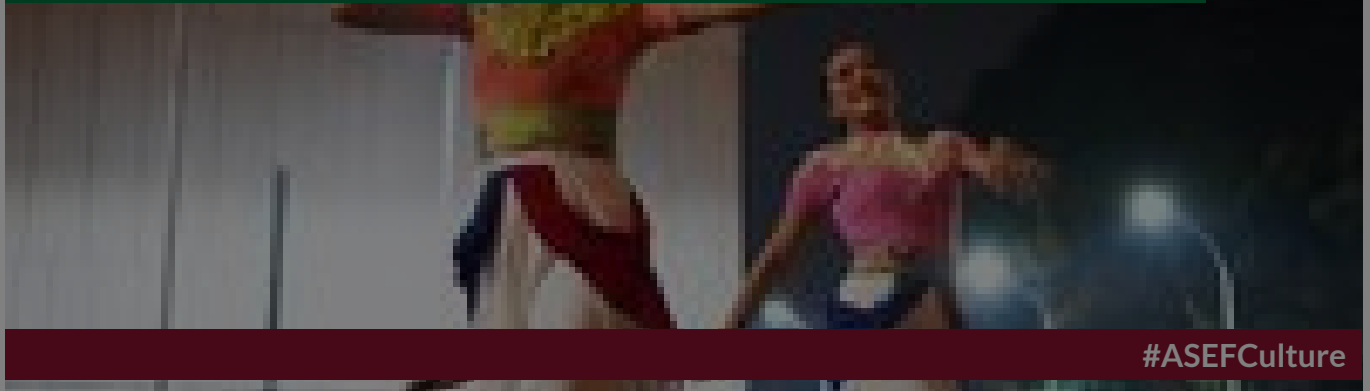
Indonesian Dance Festival (IDF), established in 1992, acts as a laboratory within Indonesia's contemporary dance ecosystem.

The biennial festival provides space for local choreographers to develop their potentials, and facilitate their encounters with global dance figures. IDF has organised over 270 performances, involved over 330 choreographers, and produced 43 commissioned and reconstruction works. As the longest-running festival in Southeast Asia, IDF has collaborated with local and international curators and a wide range of dance communities in different countries. With a vision to make dance as part of daily life, IDF organises a wide range of **festival programmes** that are accessible to the public.

SIMILAR CONTENT

BY NUR ASHIKIN ALI
13 DEC 2022

Indonesian Dance Festival 2022 | Interview with Ratri Anindyajati

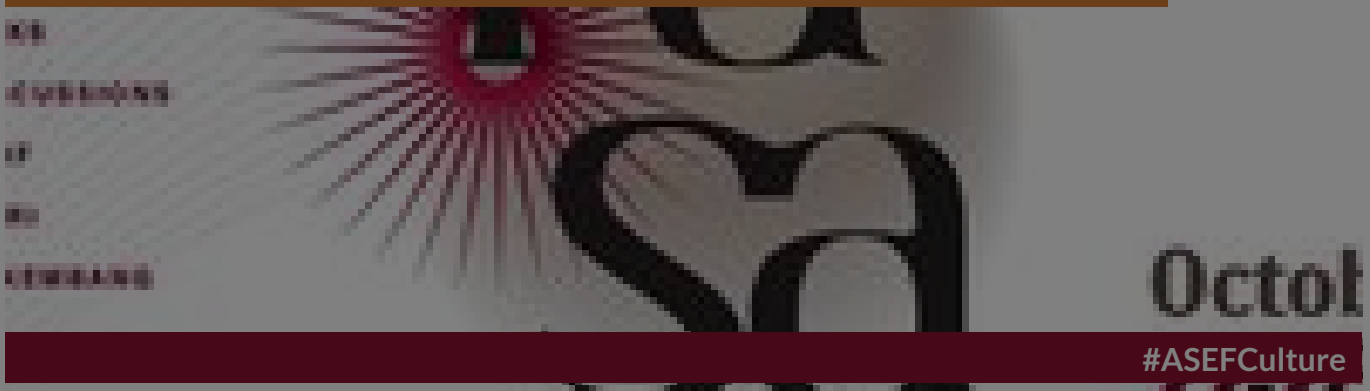


#ASEFCulture

INSIGHTS
INDONESIA

FROM - TO
22 OCT 2022 - 28 OCT 2022

culture360 Media Partnership | Indonesian Dance Festival 2022



#ASEFCulture

EVENTS
INDONESIA

DEADLINE
31 JUL 2021

Jérôme Bel international call to choreographers

OPEN CALLS
FRANCE INTERNATIONAL

POSTED ON
04 JUL 2011

Dance Centre school of performing arts

ORGANISATIONS DIRECTORY
THAILAND

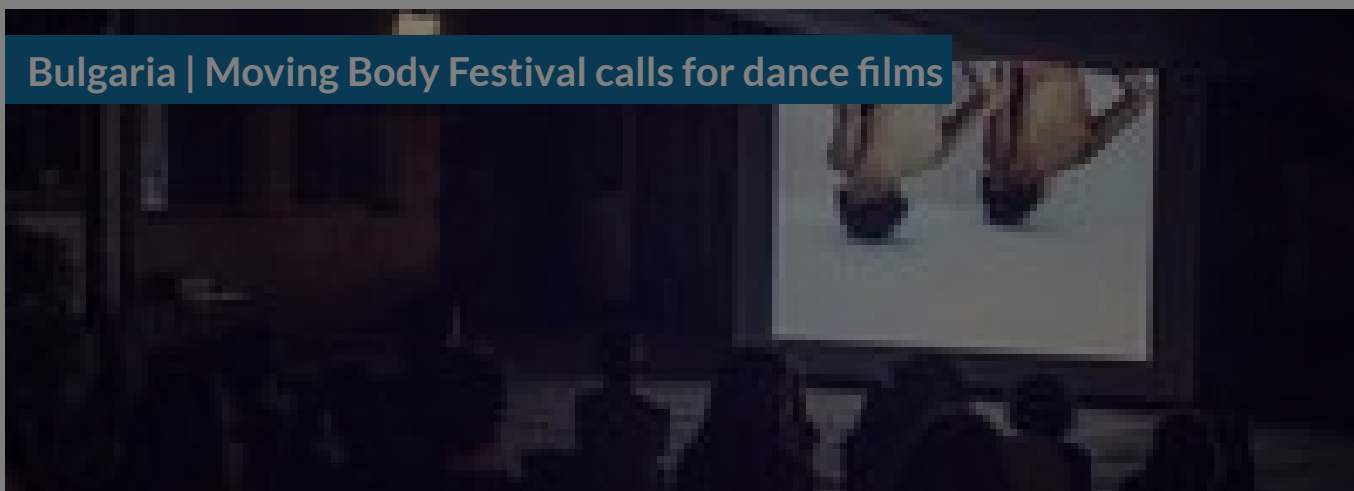
POSTED ON
07 JUN 2010

Indonesia: Creative Producers Initiative Network



DEADLINE
18 JUN 2022

Bulgaria | Moving Body Festival calls for dance films



OPEN CALLS
BULGARIA INTERNATIONAL

WEBSITE
[HTTPS://INDONESIANDANCEFESTIVAL.ID/EN/](https://indonesiandancefestival.id/en/)

COUNTRY
INDONESIA

DISCIPLINES
DANCE FESTIVALS

ABOUT ASEF CULTURE360

culture360.asef.org brings Asia and Europe closer by providing information, facilitating dialogue and stimulating reflection on the arts and culture of the two regions.

MORE ABOUT ASEF CULTURE360 | [FAQ](#) | [f](#) [X](#) [@](#)

This website was created and maintained with the financial support of the European Union. Its contents are the sole responsibility of the Asia-Europe Foundation (ASEF) and do not necessarily reflect the views of the European Union.



[About us](#)
[Team](#)
[Partners](#)
[FAQ](#)
[Brand guidelines](#)
[How to partner with us](#)
[Contact us](#)
[#ASEFCulture](#)

ASIA-EUROPE FOUNDATION (ASEF) 2017 | [TERMS OF SERVICE & PRIVACY POLICY](#) | [CREATIVE COMMONS
ATTRIBUTION - NON COMMERCIAL SHARE](#)