

[RESOURCES](#) > ifa international Press Review on 'Migration and Culture' - IETM publications

POSTED ON
19 DEC 2016

COUNTRIES
[GERMANY](#) [INTERNATIONAL](#)

THEME
[CULTURAL POLICY](#)

ifa international Press Review on 'Migration and Culture' - IETM publications



 [dinhqle](#)

The latest special international Press Review collection from ifa (Institut für Auslandsbeziehungen) in Germany is on the theme of '**Migration and Culture**'. The collected articles and international press commentaries on the recent cultural challenges of migration come from a wide range of countries and perspectives.

Take a look at the [Migration and Culture press review](#)

It includes information on the:

- Casula Powerhouse Arts Centre (NSW, Australia) [Arts and Refugees Forum](#) and [Refugees](#) art exhibition
- [Refugees as guides](#) in Berlin museums
- Child refugees sharing stories at [European Film Fest](#) in Paris
- [Shakespeare's Globe](#) takes Hamlet to the Jungle refugee camp in Calais

Readers may also like to consult the 2016 IETM publication, in the Mappings series, on

[Creation and Displacement: Developing new narratives around migration](#)

This mapping aims to showcase some of the incredible artistic projects taking place in Europe and internationally with a focus on support, solidarity and engagement with refugees, asylum-seekers and those who are recently displaced. Everywhere across Europe and beyond, contemporary performing artists are showing their role as an immediate reaction task-force to help in humanitarian crises, and use their skills to help bring relief or even heal wounds and help newcomers integrate into society. This mapping can help you connect with other artists and organisations working on this urgent topic.

and a December 2016 IETM report on:

[The role of culture in promoting inclusion in the context of migration](#)



With large numbers of refugees fleeing conflict and violence and reaching all the way to Europe, there is an urgent need to develop strategies that allow them at once to be included in European societies, while at the same time retaining a sense of their own identity, and a pride in their cultural roots. The role of cultural and educational agencies is crucial, offering safe spaces where refugees can interact with local host communities, learn the language and develop social/cultural skills, and acquire the confidence to articulate their cultural identity in the European context, as well as assisting with early recovery and transition.

This report highlights key areas where cultural interventions lead to tangible benefits, and emphasises the importance of a further tier of cultural projects that do not simply engage newcomers, refugees and migrants, but foster interaction and dialogue with wider European society.

Image: [top] Erasure (Still #1) (2011), by Dinh Q Lê Photograph: Dinh Q Lê (from the Casula Powerhouse Arts Centre 'Refugees' exhibition)

[bottom] The Sea Cemetery (Credit: Support to Life/Hayata Destek)

Similar content

POSTED ON
03 AUG 2015

EUNIC Yearbook
2014/2015 | on
migration into Europe



POSTED ON
18 MAY 2016

The Face of the
Invisible | Art and
Displacement



POSTED ON
16 MAY 2011

International Network
for Contemporary
Performing Arts
(IETM)



POSTED ON
28 JAN 2019

Mapping Cultural
Actors beyond Europe -
More Europe survey
open



POSTED ON
19 OCT 2018

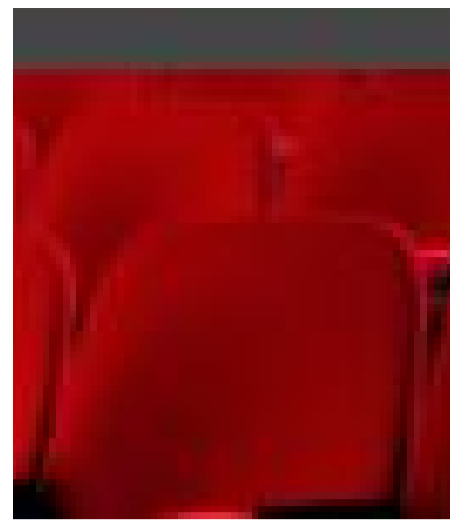
How Europe Meets
Asia | Interview w/ Paul
Dujardin



POSTED ON
11 MAY 2010

International
Playwright's Forum
Competition 2010





ABOUT ASEF **CULTURE360**

culture360.asef.org brings Asia and Europe closer by providing information, facilitating dialogue and stimulating reflection on the arts and culture of the two regions.

[MORE ABOUT ASEF CULTURE360](#) | [FAQ](#)



ASEMUS

Asia - Europe
Museum Network

[Browse our Network of
museums in Asia and Europe](#)