

Creative Responses to Sustainability | Green Guide for Portugal launched! Europe through arts and culture

 [Home](#)

Search...

Menu

- [OUR WORK](#)

#ASEFCulture

- [INSIGHTS](#)

- [OPPORTUNITIES](#)

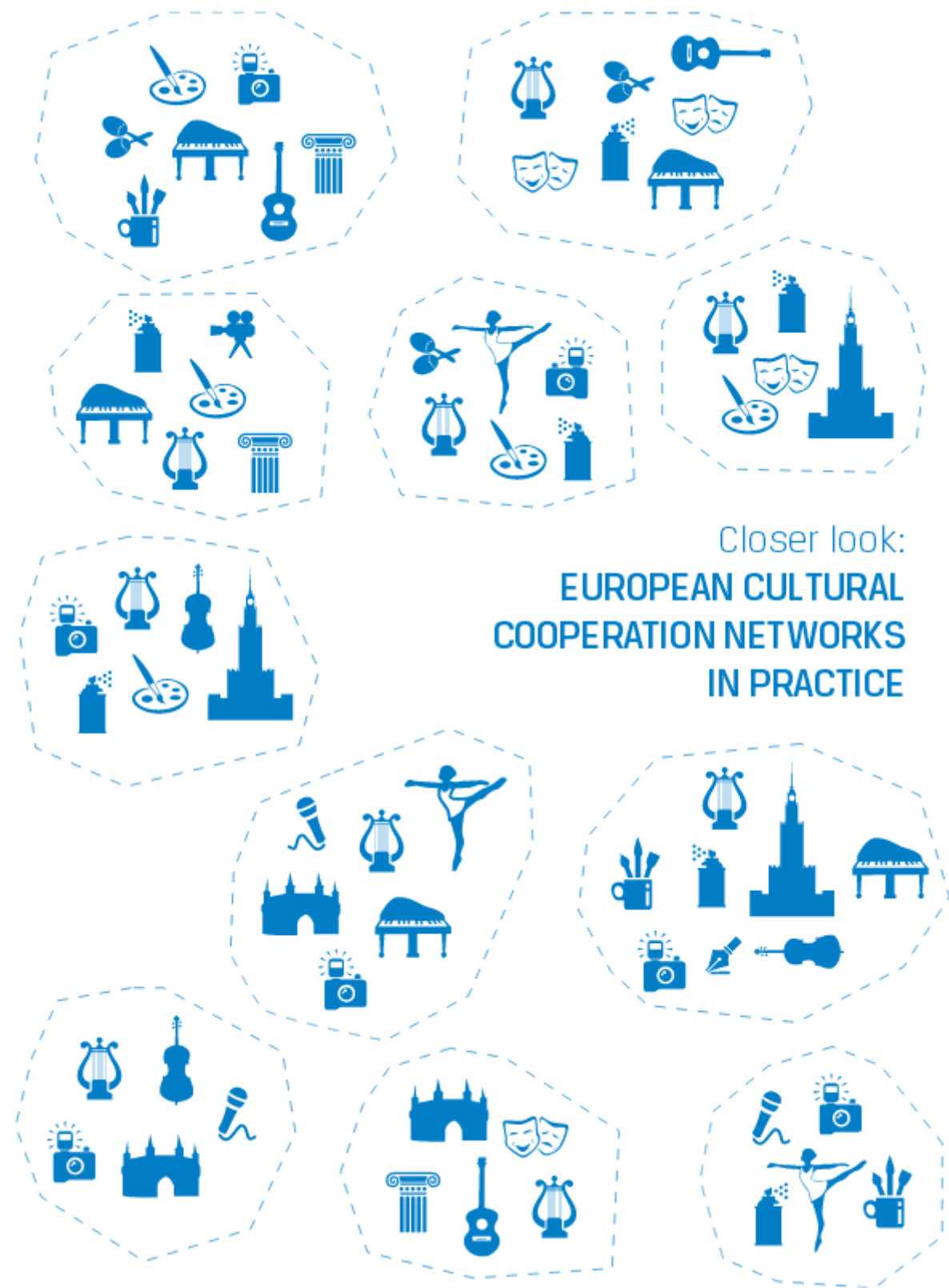
- [NEWS & EVENTS](#)

- [RESOURCES](#)

[Resources](#) > Guide to European Cultural Networks

POSTED ON
12 NOV 2013

Guide to European Cultural Networks



The Cultural Contact Point of Poland has published a **Guide to European Cultural Networks**. [European Networks EN www](http://EuropeanNetworks.eu). The guide is available as a free download (in English or Polish) and gathers the most important information about such networks to see how they work and discusses some examples and good practice and, thus, contributes to enhancing and improving the work of

these organisations.

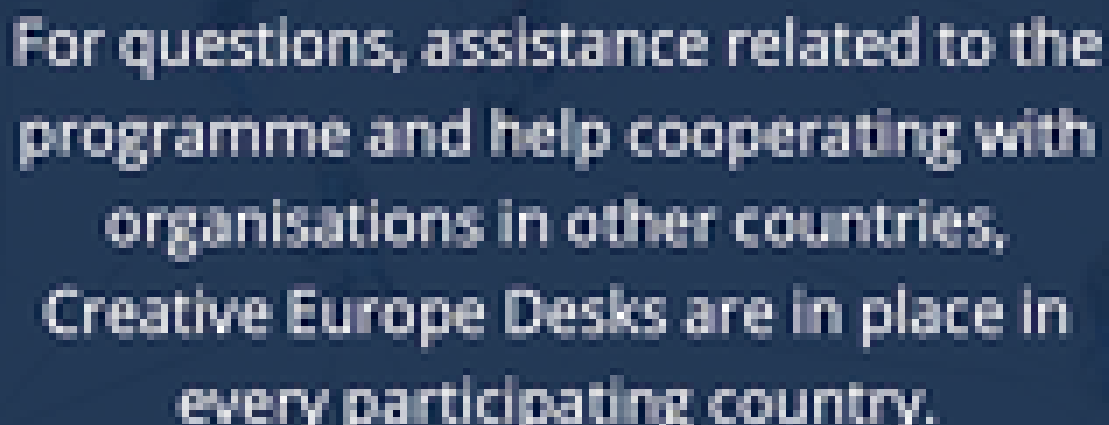
The idea arose when analysing Creative Europe, the European Commission's proposal for a framework programme for culture and creative sectors for 2014-2020, as it was noticed that the programme considers the activities of European networks of cultural organisations eligible for funding due to their important role.

The **Cultural Contact Point of Poland** is part of a large European network of **Cultural Contact Points** established in the Member States and in most of the other countries taking part in the programme. The CCPs are responsible for promoting the European cultural programmes, facilitating the participation of as many cultural professionals as possible, ensuring an exchange of information with national cultural institutions, maintaining contact between the participants in the various Community programmes and a link with the other sources of information on the various Community programmes.

Download Guide [European Networks EN](#) [www](#)

Similar content

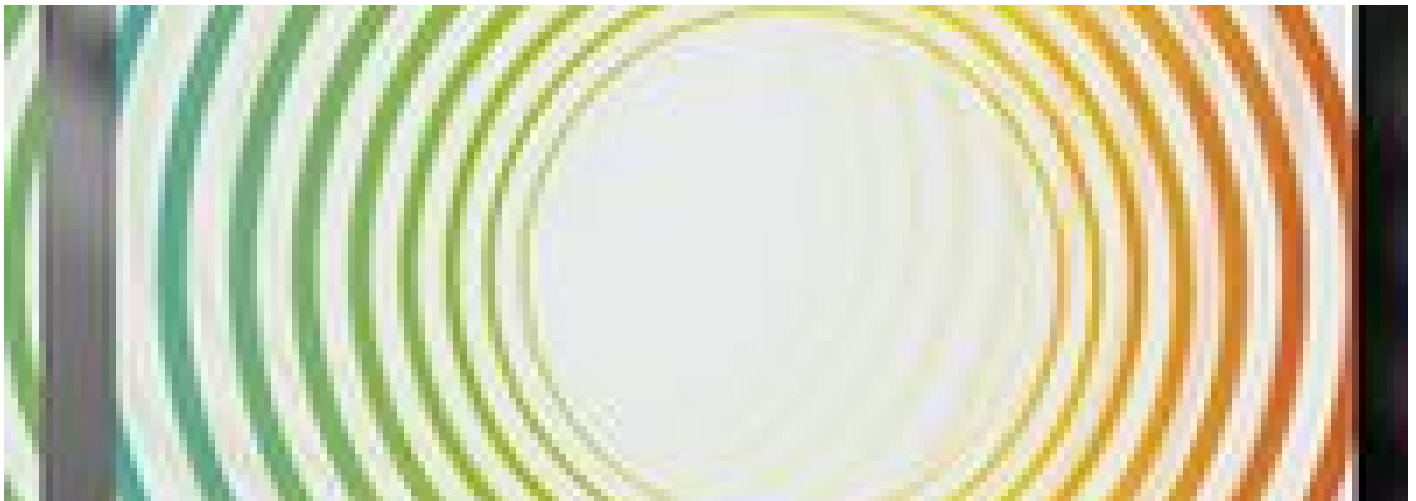
POSTED ON
22 MAY 2011

A dark blue rectangular graphic with white text. The text reads: "For questions, assistance related to the programme and help cooperating with organisations in other countries, Creative Europe Desks are in place in every participating country."

For questions, assistance related to the programme and help cooperating with organisations in other countries, Creative Europe Desks are in place in every participating country.

ORGANISATIONS DIRECTORY

EUROPE
DEADLINE
30 MAR 2016



GRANTS

FRANCE INTERNATIONAL
POSTED ON
10 JAN 2018

CULTURAL MOBILITY FUNDING GUIDE FOR THE INTERNATIONAL MOBILITY OF ARTISTS AND CULTURE PROFESSIONALS


POLAND

PUBLICATIONS

POLAND

BY FLORENTINA BRATFANOF

01 DEC 2010



2010LAB

FEATURES

EUROPE GERMANY

BY JORDI BALTÀ PORTOLÉS

29 DEC 2014



NEWS

ASIA EUROPE

BY VALENTINA RICCARDI

29 MAY 2019

RESPONSES NABILITY



INSIGHTS

PORTUGAL

Countries

- Europe
- Poland

Themes

- Cultural Management
- Cultural Policy

[View as PDF](#)

[Print](#)

Share on

Share...

ABOUT ASEF CULTURE360

culture360.asef.org brings Asia and Europe closer by providing information, facilitating dialogue and stimulating reflection on the arts and culture of the two regions.

MORE ABOUT ASEF CULTURE360 | FAQ |

This website was created and maintained with the financial support of the European Union. Its contents are the sole responsibility of the Asia-Europe Foundation (ASEF) and do not necessarily reflect the views of the European Union.

[About us](#) [Team](#) [Partners](#) [FAQ](#) [Brand guidelines](#) [How to partner with us](#) [Contact us](#)
[#ASEFCulture](#)

ASIA-EUROPE FOUNDATION (ASEF) 2017 | [TERMS OF SERVICE & PRIVACY POLICY](#) | [CREATIVE COMMONS ATTRIBUTION - NON COMMERCIAL SHARE](#)

Privacy Settings


We use cookies to optimize our website and our service.

- ☒ Functional
- ☒ Statistics
- ☒ Marketing

Save

Functional only

Accept all

 This website was created and maintained with the financial support of the European Union.