

RESOURCES > Goethe-Institut Jakarta

POSTED ON
27 MAY 2014

Goethe-Institut Jakarta



The Goethe-Institut Jakarta organises and supports a wide range of cultural events to present German culture abroad and foster intercultural exchange in Jakarta. As the regional institute for Southeast Asia, Australia and New Zealand, the Goethe-Institut Jakarta increasingly explores the potential of the regional relationship networks borne of both its cultural

history and the effects of globalisation, in its regional projects and current plans.

The Goethe-Institut Jakarta is extended by the GoetheHaus, a modern events hall with a foyer for exhibitions, serving as one of the main venues in Jakarta's cultural scene. They frequently organise and host cultural events such as **exhibitions, concerts, artists' talks, readings and film screenings.**

SIMILAR CONTENT

DEADLINE
30 JUN 2011



OPEN CALLS

BRUNEI DARUSSALAM CAMBODIA GERMANY INDONESIA LAO PDR MALAYSIA
MYANMAR PHILIPPINES SINGAPORE THAILAND VIET NAM

BY VALENTINA RICCARDI
12 NOV 2015



German Season in Indonesia | Interview with Heinrich Blömeke, Director Goethe Institut

FEATURES

DEADLINE
06 MAR 2014

DocNet Campus Southeast Asia 2014 | call for documentary filmmakers



OPPORTUNITIES

ASIA CAMBODIA MALAYSIA SINGAPORE THAILAND VIET NAM

FROM - TO
12 APR 2012 - 08 JAN 2013

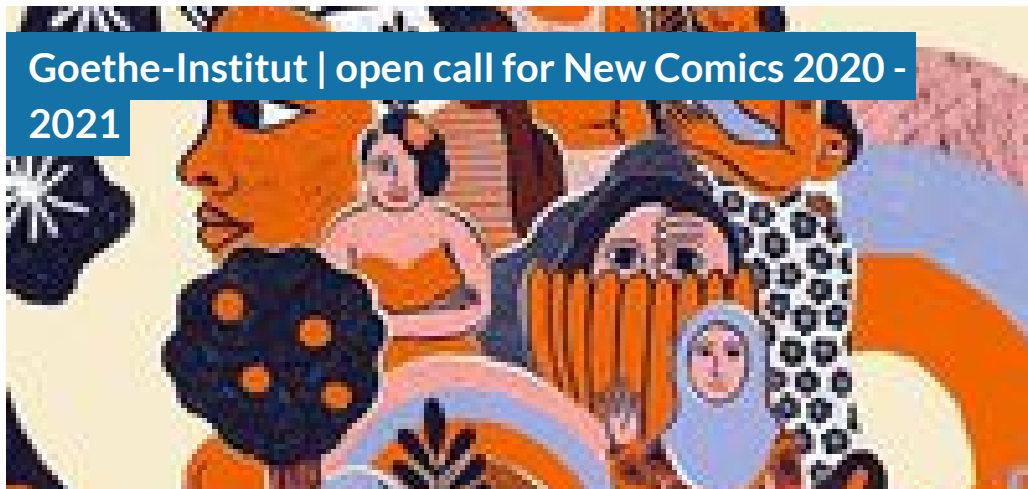
RiverScapes | Cultural River Landscapes in Southeast Asia



EVENTS

CAMBODIA GERMANY INDONESIA MYANMAR PHILIPPINES THAILAND VIET NAM

DEADLINE
31 AUG 2020



OPEN CALLS
ASIA GERMANY INDONESIA

POSTED ON
06 SEP 2010



ORGANISATIONS DIRECTORY
GERMANY INTERNATIONAL

WEBSITE
[HTTP://WWW.GOETHE.DE/INS/ID/JAK/ENINDEX.HTM](http://www.goethe.de/ins/id/jak/enindex.htm)

COUNTRIES
GERMANY INDONESIA

THEME
CULTURAL DIPLOMACY

DISCIPLINES
PERFORMING ARTS VISUAL ARTS

ABOUT ASEF CULTURE360

culture360.asef.org brings Asia and Europe closer by providing information, facilitating dialogue and stimulating reflection on the arts and culture of the two regions.

MORE ABOUT ASEF CULTURE360 | [FAQ](#) | [f](#) [X](#) [@](#)

This website was created and maintained with the financial support of the European Union. Its contents are the sole responsibility of the Asia-Europe Foundation (ASEF) and do not necessarily reflect the views of the European Union.



About us
Team
Partners
FAQ
Brand guidelines
How to partner with us
Contact us
#ASEFCulture