

## Privacy Settings

We use cookies to optimize our website and our service.

- ☒ Functional
- ☒ Statistics
- ☒ Marketing

Save

Functional only

Accept all

**Visitors Address:** Arsenaalpoort 12, 6511 PN Nijmegen

Joris Ivens (1898 Nijmegen -1989 Paris) made more than 80 films and filmed between 1912 and 1988 in over 20 countries. His life and work provide a unique insight in the turbulent 20th century.

The era of Ivens was the age of film, telegram, typewriter and air plane, the period between the Russian Revolution in 1917 and the Fall of the Berlin Wall in 1989, the era of the rise and fall of the artistic and political vanguard.

The general task the Foundation consists in:

- Initiating, advising, supervising and/or supporting projects referring to the life and work of Joris Ivens;
- Organizing meetings, exhibitions, festivals, conferences, etc.;
- Initiating and supporting activities relating to the advancement of the creative documentary film;
- Co-operating with similar organizations.

## SIMILAR CONTENT

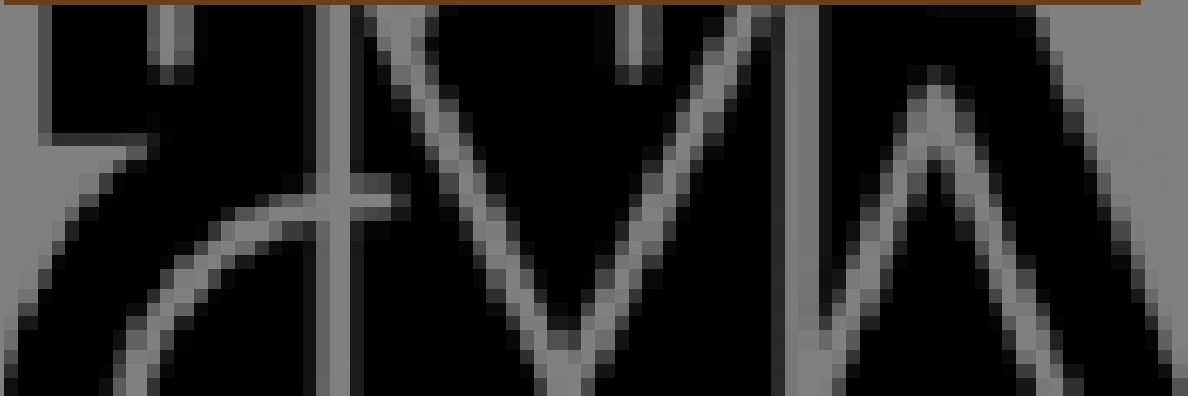
BY **KERRINE GOH**  
13 AUG 2011

Film audience and film literacy



FROM - TO  
04 APR 2017 - 05 APR 2017

## MMCA-TATE international symposium on Asian art after 1989



### EVENTS

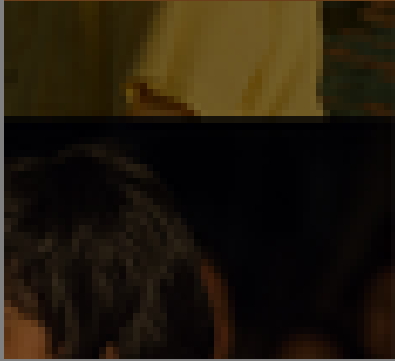
ASIA KOREA UNITED KINGDOM

BY KERRINE GOH  
07 JUL 2006

## Overview Of The Industry Development

FROM - TO  
13 MAY 2021 - 23 MAY 2021

## JFAC Asian film screenings and 'Reconnecting the region through cultural exchange' conference session



### EVENTS

ASIA JAPAN PHILIPPINES

### DEADLINE

30 JUN 2017

## Bucharest International Dance Film Festival 2017 | call for entries



### OPEN CALLS

ROMANIA

### POSTED ON

04 MAR 2011

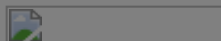
## Hong Kong Film Directors' Guild

**WEBSITE**

[HTTP://WWW.IVENS.NL](http://www.ivens.nl)

**COUNTRY**

NETHERLANDS

**DISCIPLINE**

FILM

**ABOUT ASEF CULTURE360**

[culture360.asef.org](http://culture360.asef.org) brings Asia and Europe closer by providing information, facilitating dialogue and stimulating reflection on the arts and culture of the two regions.

**MORE ABOUT ASEF CULTURE360 | [FAQ](#) | [f](#) [X](#) [@](#)**

This website was created and maintained with the financial support of the European **ORGANISATIONS DIRECTORY** Union. Its contents are the sole responsibility of the Asia-Europe Foundation (ASEF) and do not necessarily reflect the views of the European Union.



About us

Team

Partners

FAQ

Brand guidelines

How to partner with us

Contact us

#ASEFCulture