

RESOURCES > Ballet Philippines Dance School

POSTED ON
08 SEP 2010

Ballet Philippines Dance School



Ballet Philippines Dance School (BPDS) is the official dance school of Ballet Philippines. BPDS is the premier training ground for dance students who wish to pursue a career in dance. Their training programme is both rigorous and nurturing. It is rooted in excellence in classical ballet and contemporary dance, developing creativity and artistry, while instilling in

the young dancer a sense of generosity, grace, dignity and respect for oneself, for others and for their craft.

SIMILAR CONTENT

POSTED ON
28 JUN 2011

Ballet Philippines



ORGANISATIONS DIRECTORY
PHILIPPINES

POSTED ON
04 JUL 2011

Leyte Dance Theater



ORGANISATIONS DIRECTORY
PHILIPPINES

POSTED ON
02 OCT 2018

English Ballet Theatre Cambodia

English
Ballet
Theatre
Cambodia

ORGANISATIONS DIRECTORY
CAMBODIA

POSTED ON
08 SEP 2010

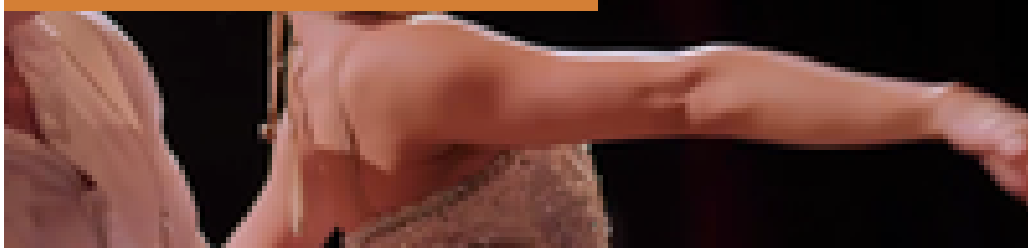
Philippine Ballet Theater

PBT
PHILIPPINE
BALLET
THEATRE

ORGANISATIONS DIRECTORY
PHILIPPINES

FROM - TO
22 NOV 2021 - 26 NOV 2021

Asia-Europe Cultural Festival: 2021 | Philippines' Day of Culture with No Barriers



POSTED ON
04 JUL 2011

Dance Centre school of performing arts



ORGANISATIONS DIRECTORY
THAILAND

WEBSITE

[HTTPS://WWW.BALLET.PH/BALLET-PHILIPPINES-DANCE-SCHOOL/](https://www.ballet.ph/ballet-philippines-dance-school/)

COUNTRY

PHILIPPINES

DISCIPLINE

DANCE

ABOUT ASEF CULTURE360

culture360.asef.org brings Asia and Europe closer by providing information, facilitating dialogue and stimulating reflection on the arts and culture of the two regions.

MORE ABOUT ASEF CULTURE360 | [FAQ](#) | [f](#) [X](#) [@](#)



This website was created and maintained with the financial support of the European Union. Its contents are the sole responsibility of the Asia-Europe Foundation (ASEF) and do not necessarily reflect the views of the European Union.

[About us](#)

[Team](#)

[Partners](#)

[FAQ](#)

[Brand guidelines](#)

[How to partner with us](#)

[Contact us](#)

[#ASEFCulture](#)