

RESOURCES > Between art and environment: a selection of case studies

POSTED ON
02 APR 2012

Between art and environment: a selection of case studies



As part of the **Connect2Culture Art & Environment** programme, the Department of Cultural Exchange at the **Asia-Europe Foundation** commissioned a research to investigate good practices connecting the arts to initiatives tackling environmental sustainability issues in a number of Asian countries. Titled *Linking the Arts to Environment and Sustainable Development*, the research project documented case studies that can not only provide inspiration for networking and collaboration between Asia and Europe but also aid policy making and planning.

[caption id="attachment_19794" align="alignnone" width="560" caption="A child participating in representing an emotional-spatial map of the neighbourhood. Image courtesy of Katte Project co-organised by Maraa, a media collective and Salon Emmer, a dance collective"]



A child participating in representing an emotional-spatial map of the neighbourhood. Image courtesy of Katte Project co-organised by Maraa, a media collective and Salon Emmer, a dance collective

[/caption]

The projects researched ranged from creative interventions, public art initiatives, networks, seminars, training, research and documentation projects. ASEF was particularly interested in examples that went beyond merely employing the arts as tools for information dissemination and sought initiatives that envisaged art as a catalyst to stimulate discussion and foster change by posing pertinent questions.

The research highlighted initiatives from:

- India
- Myanmar
- Thailand
- Laos
- Cambodia
- Vietnam
- Malaysia
- Singapore
- Mongolia

Environmental conservation and sustainable development are among the key challenges faced by countries and communities across the world. Since the [United Nations Conference on Environment and Development](#) (also

known as the Earth Summit) in Rio de Janeiro in 1992, civil society stakeholders have become increasingly active, alongside governments, in the global dialogue on environmental issues. More recently, the culture sector has begun to explore and engage with pressing issues of environmental sustainability.

In this global context, local researchers examined initiatives by the cultural sector as well as by civil society organisations working on environmental issues. These investigations were conducted in two phases. The first phase consisted of a broad study which mapped initiatives within a country while the second phase delved deeper into selected initiatives. The researchers interviewed leaders of these initiatives in order to explore the issues and themes further. The case studies took into consideration elements such as the sustainability of the projects as well as the importance of audience development.

Director Marc Schmitz of the [Land Art Biennial in Mongolia](#) stated about their initiative: “It was about a new understanding of environment, face nature as alive, and discussions about art as well.” The role of art in questioning our relationship with the environment and the sustainability of our lifestyles will only increase in the coming years and as such these case studies provide interesting models that transcend national boundaries.

You can download this [ASEF-commissioned research here](#).

You can also find highlights of the research on [culture360.org](#):

- [Between art and environment: a Thailand Case Study](#)
- [Between art and environment: a Mongolian case study](#)
- [Between art and environment: an Indian case study](#)
- [Between art and environment: a Malaysian case study](#)
- [Between art and environment: a Singapore case study](#)

This research was part of the Connect2Culture Art and Environment

Programme and was commissioned in conjunction with the dossier: **Arts. Environment. Sustainability. How can Culture Make a Difference?**

SIMILAR CONTENT

BY **CLAIRE WILSON**
06 MAR 2012



FEATURES

AUSTRALIA NEW ZEALAND SINGAPORE UNITED KINGDOM

POSTED ON
28 SEP 2011

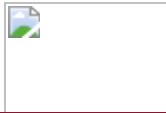


PUBLICATIONS

ASIA AUSTRALIA EUROPE

BY **KERRINE GOH**
10 JAN 2012

Between art and environment: a Mongolian case study



#ASEFCulture

BY **CLAIRE WILSON**
21 FEB 2012

Between art and environment: a Malaysian case study



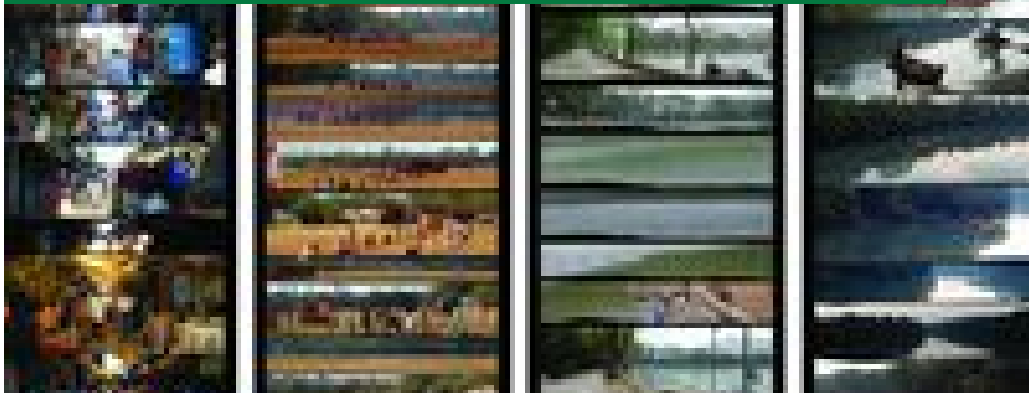
FEATURES
MALAYSIA

POSTED ON
17 APR 2010

Connect2Culture: Asia-EU arts culture & sustainability

BY CLAIRE WILSON
08 FEB 2012

Between art and environment: an Indian case study



FEATURES
INDIA

COUNTRIES

CAMBODIA INDIA LAO PDR MALAYSIA MONGOLIA MYANMAR SINGAPORE
THAILAND VIET NAM

THEMES

ART AND ENVIRONMENT CULTURAL MANAGEMENT

ABOUT ASEF CULTURE360

culture360.asef.org brings Asia and Europe closer by providing information, facilitating dialogue and stimulating reflection on the arts and culture of the two regions.

MORE ABOUT ASEF CULTURE360 | [FAQ](#) | [f](#) [X](#) [@](#)

This website was created and maintained with the financial support of the European Union. Its contents are the sole



responsibility of the Asia-Europe Foundation (ASEF) and do not necessarily reflect the views of the European Union.

About us

Team

Partners

FAQ

Brand guidelines

How to partner with us

Contact us

#ASEFCulture

ASIA-EUROPE FOUNDATION (ASEF) 2017 | [TERMS OF SERVICE & PRIVACY POLICY](#) | [CREATIVE COMMONS ATTRIBUTION - NON COMMERCIAL SHARE](#)