

Privacy Settings

We use cookies to optimize our website and our service.

- ☒ Functional
- ☒ Statistics
- ☒ Marketing

Save

Functional only

Accept all

A | C | F
Asian Cinema Fund

Asian Cinema Fund (ACF) has been an essential partner for Asian cinema with its three supporting categories: **Script Development Fund**, **Post-production Fund** and **Asian Network of Documentary (AND) Fund**.

ACF is committed to **help activate more independent film productions and to set up a stable production environment**. New Asian cinema discovered by ACF gets to complete into a film through comprehensive support from A to Z and to explore various opportunities through Busan's family programs such as Asian Film Market and Asian Project Market (APM).

ACF projects have been presented at many international film festivals and received great response both from audience and critics. Now, ACF **helps Asian feature films and documentaries to establish their identities and to position themselves as important parts of the film industry**. During the **Busan International Film Festival**, ACF provides a forum for Asian filmmakers to **share their knowledge, leading to a pan-Asian network**. Also, in cooperation with other international film festivals, ACF broadens opportunities to present high quality Asian films and documentaries around the world.

SIMILAR CONTENT

DEADLINE
20 APR 2019



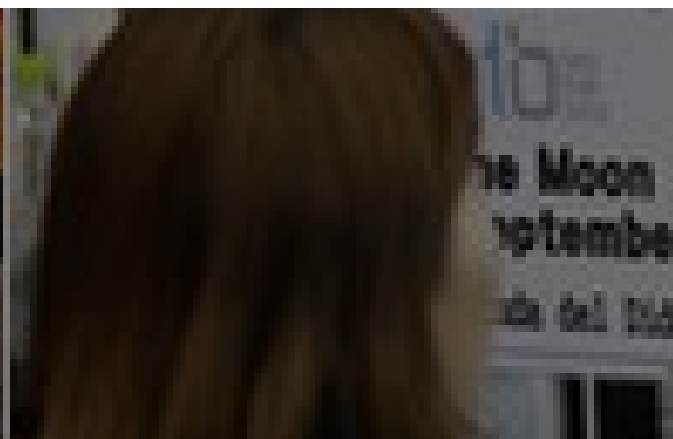
Asian Cinema Fund - calls for proposals

GRANTS
ASIA KOREA

DEADLINE
20 APR 2016

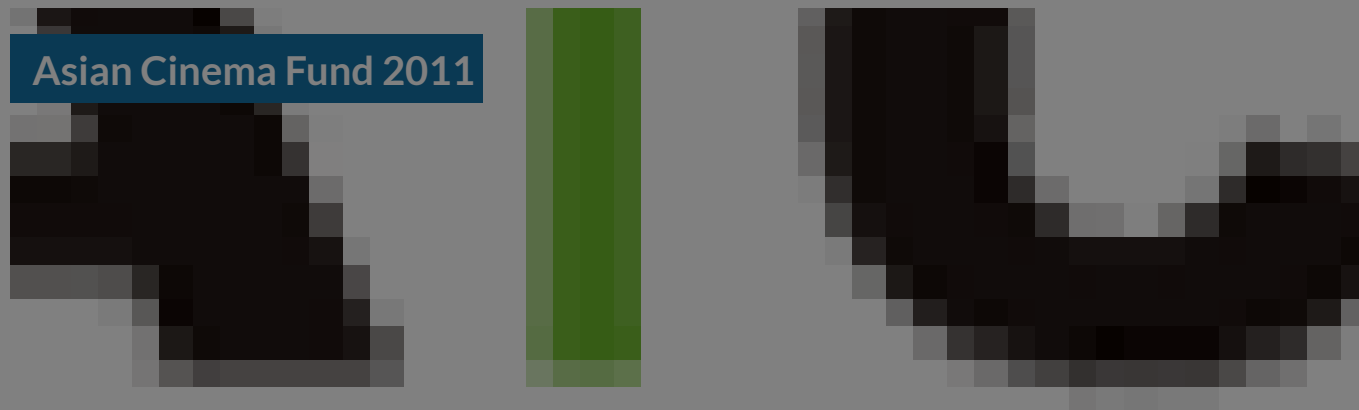


Asian Cinema Fund | 2016 calls



DEADLINE
10 MAY 2011

Asian Cinema Fund 2011



OPPORTUNITIES
ASIA KOREA

DEADLINE
15 MAY 2023

Asian Cinema Fund 2023

A C F

Asian Cinema Fund

OPEN CALLS
ASIA KOREA

DEADLINE
15 APR 2024

Asian Cinema Fund 2024

ACF

Asian Cinema Fund

OPEN CALLS
ASIA KOREA

DEADLINE
20 APR 2017

Asian Cinema Fund 2017

ASIAN
CINEMA
FUND

GRANTS
ASIA KOREA

WEBSITE
[HTTP://ACF.BIFF.KR/](http://acf.biff.kr/)

COUNTRY
KOREA

THEME
PROFESSIONAL DEVELOPMENT

DISCIPLINE
FILM

ABOUT ASEF CULTURE360

culture360.asef.org brings Asia and Europe closer by providing information, facilitating dialogue and stimulating reflection on the arts and culture of the two regions.

MORE ABOUT ASEF CULTURE360 | [FAQ](#) | [f](#) [X](#) [@](#)

This website was created and maintained with the financial support of the European Union. Its contents are the sole responsibility of the Asia-Europe Foundation (ASEF) and do not necessarily reflect the views of the European Union.



[About us](#)

[Team](#)

[Partners](#)

[FAQ](#)

[Brand guidelines](#)

[How to partner with us](#)

[Contact us](#)

[#ASEFCulture](#)

ASIA-EUROPE FOUNDATION (ASEF) 2017 | [TERMS OF SERVICE & PRIVACY POLICY](#) | [CREATIVE COMMONS
ATTRIBUTION - NON COMMERCIAL SHARE](#)