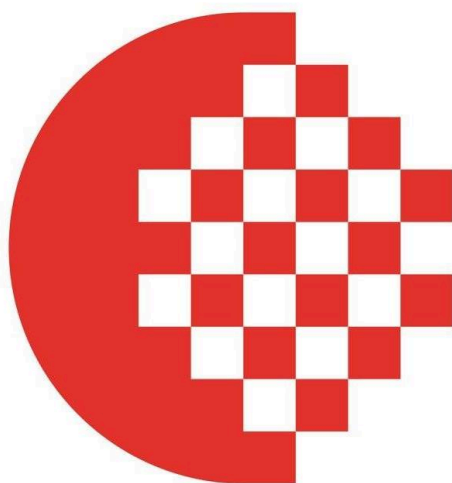


RESOURCES > Agency for Cultural Affairs of Japan

POSTED ON
05 JUL 2011

Agency for Cultural Affairs of Japan



文化庁

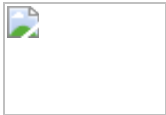
The Agency of Cultural Affairs of Japan was established in 1968 through a merger between the former Cultural Bureau of the Ministry of Education and the Cultural Properties Protection Commission. Amongst others, the Agency for Cultural Affairs furthers **international exchange and**

cooperation. The ACA strives to **promote culture** and international cultural exchange and administers matters concerning religious juridical persons.



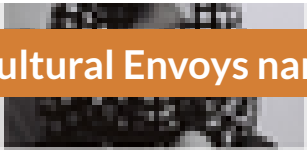

SIMILAR CONTENT

POSTED ON
02 JUN 2011


Agency For Cultural Affairs




POSTED ON
20 FEB 2017




Japan Cultural Envoys named



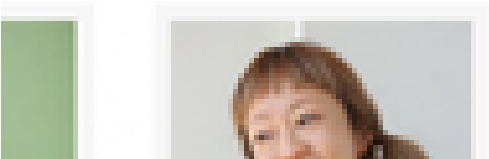
Yoshida Sanae
Architect, Artist



Nishida Tetsuo
Professor at Kyoto University, Artist



...



NEWS
CHINA INTERNATIONAL JAPAN KOREA

POSTED ON
19 AUG 2013

Ministry of Culture and Heritage

Manatū Taonga

ORGANISATIONS DIRECTORY
NEW ZEALAND

FROM - TO
03 JUN 2018 - 06 JUL 2018

Art Brut - Sweden and Japan exhibition

RUTSVERIGE

EVENTS
JAPAN SWEDEN

POSTED ON
06 APR 2010

Launch of LatitudeFrance cultural action website



POSTED ON
06 SEP 2010

Sapporo Artist-in-Residence Programme



ORGANISATIONS DIRECTORY
JAPAN

WEBSITE
[HTTP://WWW.BUNKA.GO.JP/ENGLISH/INDEX.HTML](http://www.bunka.go.jp/english/index.html)

COUNTRY
JAPAN

THEME
CULTURAL POLICY

ABOUT ASEF CULTURE360

culture360.asef.org brings Asia and Europe closer by providing information, facilitating dialogue and stimulating reflection on the arts and culture of the two regions.

[MORE ABOUT ASEF CULTURE360](#) | [FAQ](#) | [!\[\]\(758ebdf4629c903da74c2e079717ae32_img.jpg\)](#) [!\[\]\(e7d82ae1e31b23b67694dcc1e3031ff6_img.jpg\)](#) [!\[\]\(e4aa5dd07782217adf10903e7f7dc845_img.jpg\)](#)

This website was created and maintained with the financial support of the European Union. Its contents are the sole responsibility of the Asia-Europe Foundation (ASEF) and do not necessarily reflect the views of the European Union.



[About us](#)

[Team](#)

[Partners](#)

[FAQ](#)

[Brand guidelines](#)

[How to partner with us](#)

[Contact us](#)

[#ASEFCulture](#)