

[OPPORTUNITIES](#) > WOW World of WearableArt design competition

DEADLINE
28 MAR 2018

WEBSITE
[HTTPS://WWW.WORLDOFWEARABLE..](https://www.worldofwearable.com)

COUNTRIES
[INTERNATIONAL](#) [NEW ZEALAND](#)

THEME
[CREATIVE INDUSTRIES](#)

DISCIPLINE
[DESIGN](#)

WOW World of WearableArt design competition



WOW World of WearableArt Design Competition is a renowned international design competition that attracts hundreds of entries from all over the world. Using the human body as a blank canvas designers create works of wearable art to be exhibited in the annual WOW Awards Show.

World of WearableArt invites you to enter the internationally renowned design competition. Bring your work of art to life, on stage, for the whole world to see in 2018.

For 30 years, World of WearableArt has bewitched and beguiled. Now, for this very special anniversary event, we're once again calling on designers, artists and creators everywhere to bring to life the worlds that live in your mind for this truly international design competition.

Designers must submit an intention to enter by 28 March 2018 to officially enrol in the current year's competition.

Pre-selected entrants will be informed and must complete their garments by 18 June 2018.

World of WearableArt (WOW) is a leading **wearable** art design competition in New Zealand. In 2017, 122 designers from 13 countries exhibited their works of art on stage in WOW.

Similar content

POSTED ON
26 FEB 2019

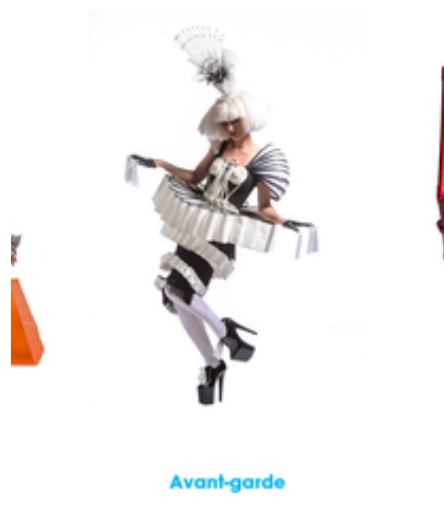
World of WearableArt
(WOW) Competition
2019

POSTED ON
19 JAN 2012

World of Wearable Art
| Hong Kong Arts
Festival

POSTED ON
22 JAN 2020

Tasmania | Burnie
Wearable Paper Art
Competition 2020



Avant-garde

POSTED ON
26 SEP 2012



Shenzhen | Dutch
fashion and design
exhibition



POSTED ON
28 FEB 2013



NSW hosts WOW Film
Festival



POSTED ON
25 SEP 2018



China Shanghai
International Children's
Book Fair 2018

ABOUT ASEF **CULTURE360**

culture360.asef.org brings Asia and Europe closer by providing information, facilitating dialogue and stimulating reflection on the arts and culture of the two regions.

[MORE ABOUT ASEF CULTURE360 |](#)
[FAQ](#)



ASEMUS
Asia - Europe
Museum Network

[Browse our Network of
museums in Asia and Europe](#)