

[OPPORTUNITIES](#) > UK-Japan grants and awards 2010

DEADLINE  
28 APR 2010

WEBSITE

[HTTP://WWW.DAJF.ORG.UK/PAGE...](http://www.dajf.org.uk/page...)

COUNTRIES

[JAPAN](#) [UNITED KINGDOM](#)

DISCIPLINES

[DANCE](#) [LITERATURE](#) [MUSIC](#) [VISUAL](#)  
[ARTS](#)

## UK-Japan grants and awards 2010



[caption id="attachment\_2056" align="alignright" width="210" caption="Daiwa Foundation Japan



House opening 1994"] [caption]

The [Daiwa Anglo Japanese Foundation](#) awards grants to individuals and institutions in the UK and Japan in all areas of the visual and performing arts, the humanities, the social sciences, science and engineering, mathematics, business studies, and education, including schools and universities, and grass roots and professional groups.

Grant-giving in 2010 will be carried out via the following programmes:

### DAIWA FOUNDATION SMALL GRANTS

Grants of £3,000-£7,000 are available to individuals, societies, associations or other bodies in the UK or Japan to promote and support interaction between the two countries. Daiwa Foundation Small Grants can cover all fields of activity, including educational and grassroots exchanges, research travel, the organisation of conferences, exhibitions, and other projects and events that fulfil this broad objective. New initiatives are especially encouraged.

### DAIWA FOUNDATION AWARDS

Awards of £7,000-£15,000 are available for collaborative projects that enable British and Japanese partners to work together, preferably in the context of an institutional relationship. Daiwa Foundation Awards can cover projects in most academic, professional, arts, cultural and educational fields.

## Similar content

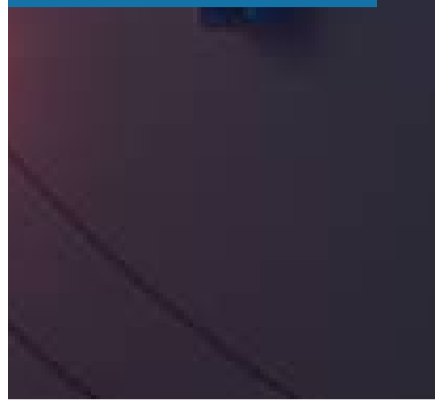
POSTED ON  
07 SEP 2012

Daiwa Anglo-Japanese  
Foundation | call for  
applications



POSTED ON  
08 JUL 2014

Daiwa Anglo-Japanese  
Foundation Art Prize



POSTED ON  
21 NOV 2011

Daiwa Foundation Art  
Prize shortlist  
announced



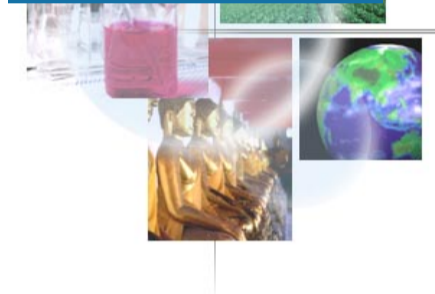
POSTED ON  
06 OCT 2011

Performing Arts Japan  
| programme for  
Europe



POSTED ON  
12 SEP 2013

The Sumitomo  
Foundation | grants for  
Japan-related research  
for Asian researchers



POSTED ON  
18 SEP 2014

Performing Arts Japan  
Programme for Europe |  
PAJ Europe 2015-16



### **ABOUT ASEF CULTURE360**

[culture360.asef.org](http://culture360.asef.org) brings Asia and Europe closer by providing information, facilitating dialogue and stimulating reflection on the arts and culture of the two regions.

[MORE ABOUT ASEF CULTURE360 |  
FAQ](#)



This website was created and maintained with the financial support of the European Union. Its contents are the sole responsibility of the Asia-Europe Foundation (ASEF) and do not necessarily reflect the views of the European Union.



**ASEMUS**  
Asia - Europe  
Museum Network

[Browse our Network of  
museums in Asia and Europe](#)