

Privacy Settings

We use cookies to optimize our website and our service.

- ☒ Functional
- ☒ Statistics
- ☒ Marketing

Save

Functional only

Accept all

WEBSITE
[HTTPS://WWW.PAPERONSKIN.COM/](https://www.paperonskin.com/)

COUNTRIES
[AUSTRALIA](#) [INTERNATIONAL](#)

DISCIPLINES
[CRAFT](#) [DESIGN](#) [VISUAL ARTS](#)

Wearable paper art call for entries



Image: *Flower of Life* by Brielle Killip,
Chris Geissinger & Jennifer Garber (2020).
Photographer: Grant Wells Photo

Paper on Skin invites **Australian** and **international artists** to embrace the challenge of designing a **wearable garment made from at least 80% paper**.

In 2022, it will be ten years since the first Paper on Skin event, held at the Burnie Regional Art Gallery. In recognition of this significant milestone, the organisation is relocating to the new home of Devonport and expanding its suite of activities.

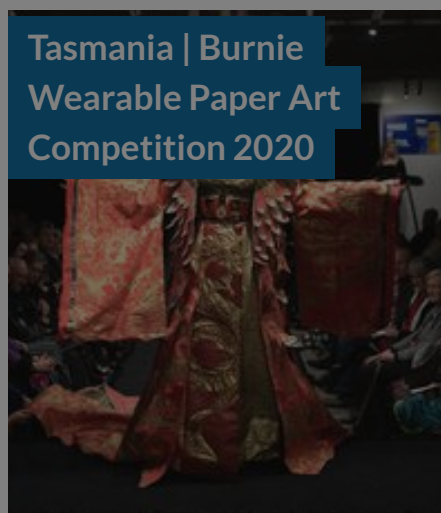
Entries for Paper on Skin from artists around the world aged 16+ are invited. Collaborative entries are permitted. For competition entry and inclusion in gala parade, film, photography and exhibition. [See full guidelines](#)

Deadline for entries: 20 January 2022

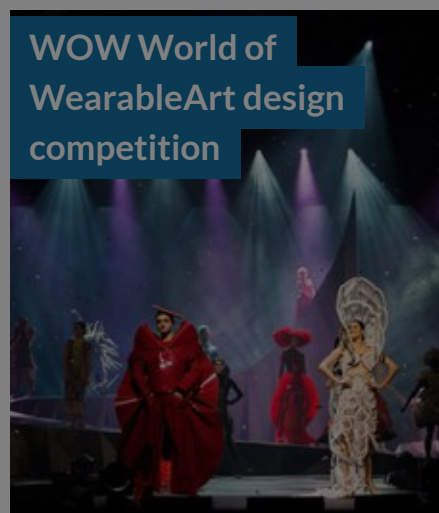
In expanding the activities, a sister event to Paper on Skin will be developed in 2022 'Paper Off Skin'. This international competition will expand the artistry and innovation seen in the works of Paper on Skin – without the works needing to be wearable! See website for details (deadline is 1st March 2022)

Similar content

POSTED ON
22 JAN 2020



POSTED ON
18 FEB 2018



POSTED ON
26 FEB 2019



POSTED ON
16 MAR 2022

Performance Art
Research Ljubljana
PARL 2022



POSTED ON
18 MAY 2021

Golden Pinwheel
Young Illustrators
Competition 2021



POSTED ON
02 FEB 2015

Kobe Biennale 2015 |
open calls



ABOUT ASEF CULTURE360

culture360.asef.org brings Asia and Europe closer by providing information, facilitating dialogue and stimulating reflection on the arts and culture of the two regions.

[MORE ABOUT ASEF CULTURE360](#) | [FAQ](#)

