

## OPPORTUNITIES > Sweden | Art Inside Out Residency

DEADLINE  
05 NOV 2021

### Sweden | Art Inside Out Residency



Art Inside Out invites applications for an artistic residency where “ecological literacy” is used as point of departure in a movement through two similar ecological conditions: (1) the meeting between the sea north of city of Varberg and the river Viskan and (2) the earthy landscape surrounding the city of Laholm, Sweden.

Four artists will be selected for the 12 weeks residency in 2022. Submissions from Swedish and international artists in all art fields are welcome.

*Between the rains*, is a temporary space for action, in between downpours and radical fluxes in water flows. It also contains a scanning of landscapes as highly entangled ecological systems difficult to delimit, and an inescapable turning point in an unsustainable line of development, or a concept of time where we wait in silence and anticipation for the rain to once again fall.

*Between the rains* wishes to evoke other modes to understand and relate to ecology and ecological systems. Cartographic readings that are not contained in a singular run-off map, analysis of soil quality, inventory of species or spatial mapping, but instead consolidates them in a interconnected gleam of nuances, subjects, relationships, cross readings and layers. Therefor we are looking for artistic practices that are nurtured by the many interdisciplinary questions about ethics, politics and knowledge which escort such a shift. Artistry that are at the same time interested in working within a decentralisation of human activities and searching for equal alliances between species where coexistence, mutual learning and carefully managed relationships are brought in to focus and replacing an endless quest for surplus and dominance.

Throughout the residency, and in concurrence with present research about climate and community transition, we try to develop our understanding of the systems and places we engage with. We are hoping for the residency to facilitate explorations into the capacity for artistic competences and critical imagination – especially within planing and transition processes – to bridge knowledge gaps, expose conditions, nudge norms, inverse perspectives and indicate alternative acting spaces.

### **Art Inside Out is inviting four artists to a 12-week residency in 2022**

The residency schedule is as follows: research (May 30–June 17), production & presentation (August 29–October 30).\*

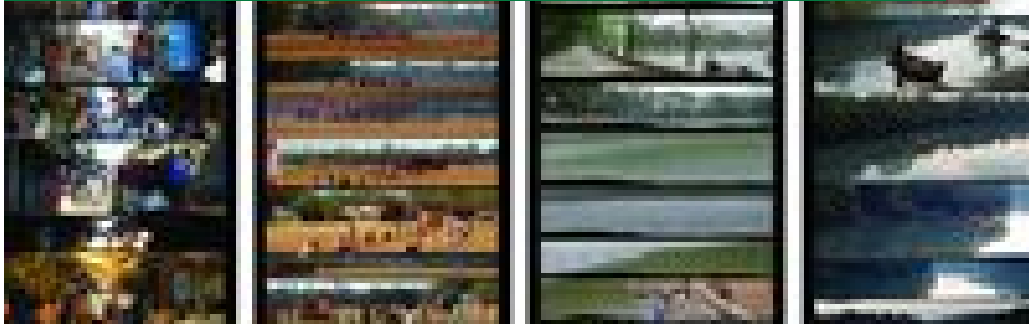
Each accepted artist will receive equivalent to 138 000 SEK (F-taxable, exclusive VAT, paid by invoice) for a 12 week long residency, and a production budget of 20 000 SEK. The artist is responsible for paying applicable taxes in their home country. Art Inside Out covers associated costs such as travel, housing, workspaces and process management.\*\*

---

## **SIMILAR CONTENT**

BY **CLAIRE WILSON**  
08 FEB 2012

## Between art and environment: an Indian case study



DEADLINE  
25 NOV 2022

## Sweden | 2023 communal residency at hybrida.space



### RESIDENCIES

DENMARK ESTONIA FINLAND LATVIA LITHUANIA NORWAY SWEDEN

DEADLINE  
26 DEC 2021

## Estonia | Wild Bits residency call 2022



### RESIDENCIES

ESTONIA INTERNATIONAL LATVIA LITHUANIA

DEADLINE  
01 MAR 2022

## COAL Art and Environment Prize 2022



OPEN CALLS  
FRANCE INTERNATIONAL

DEADLINE  
15 JUL 2016

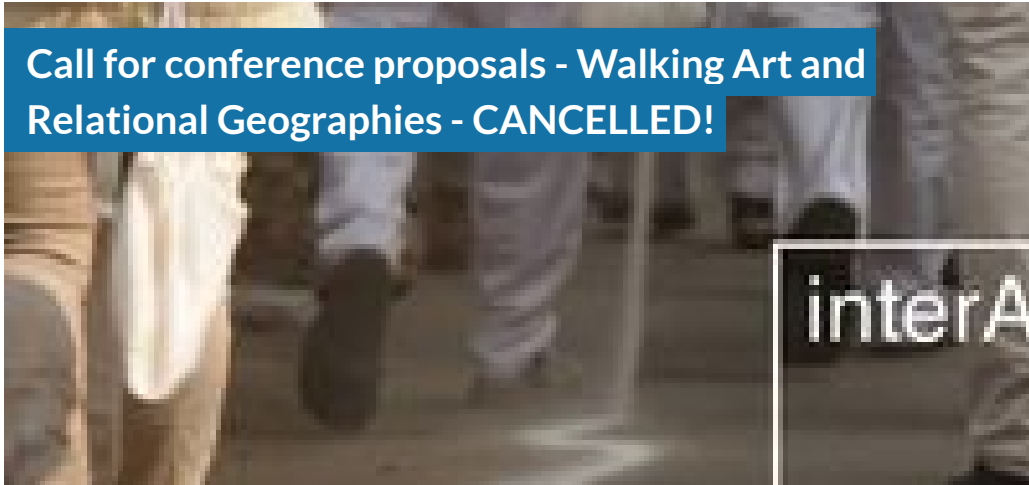
## Moscow | call for entries for International Video Art Festival Now&After



OPEN CALLS  
INTERNATIONAL RUSSIAN FEDERATION

DEADLINE  
10 MAY 2020

## Call for conference proposals - Walking Art and Relational Geographies - CANCELLED!



### OPEN CALLS

INTERNATIONAL SPAIN

### WEBSITE

[HTTPS://ARTINSIDEOUT.SE/PAGE/MELLAN-REGNEN-EN](https://artinsideout.se/page/mellan-regnen-en)

### COUNTRIES

INTERNATIONAL SWEDEN

### THEME

ART AND ENVIRONMENT

### DISCIPLINES

NEW MEDIA PERFORMING ARTS VISUAL ARTS

### ABOUT ASEF CULTURE360

[culture360.asef.org](https://culture360.asef.org) brings Asia and Europe closer by providing information, facilitating dialogue and stimulating reflection on the arts and culture of the two regions.

[MORE ABOUT ASEF CULTURE360](#) | [FAQ](#) | [!\[\]\(799877f5c2f906134441300079881630\_img.jpg\)](#) [!\[\]\(2cdb4db9cae0d6ef949a960a952715f8\_img.jpg\)](#) [!\[\]\(42db6ea4631dfa4c986fa7b55279824c\_img.jpg\)](#)

This website was created and maintained with the financial support of the European Union. Its contents are the sole responsibility of the Asia-Europe Foundation (ASEF) and do not necessarily reflect the views of the European Union.



About us  
Team  
Partners  
FAQ  
Brand guidelines

How to partner with us

Contact us

#ASEFCulture

ASIA-EUROPE FOUNDATION (ASEF) 2017 | [TERMS OF SERVICE & PRIVACY POLICY](#) | [CREATIVE COMMONS ATTRIBUTION - NON COMMERCIAL SHARE](#)