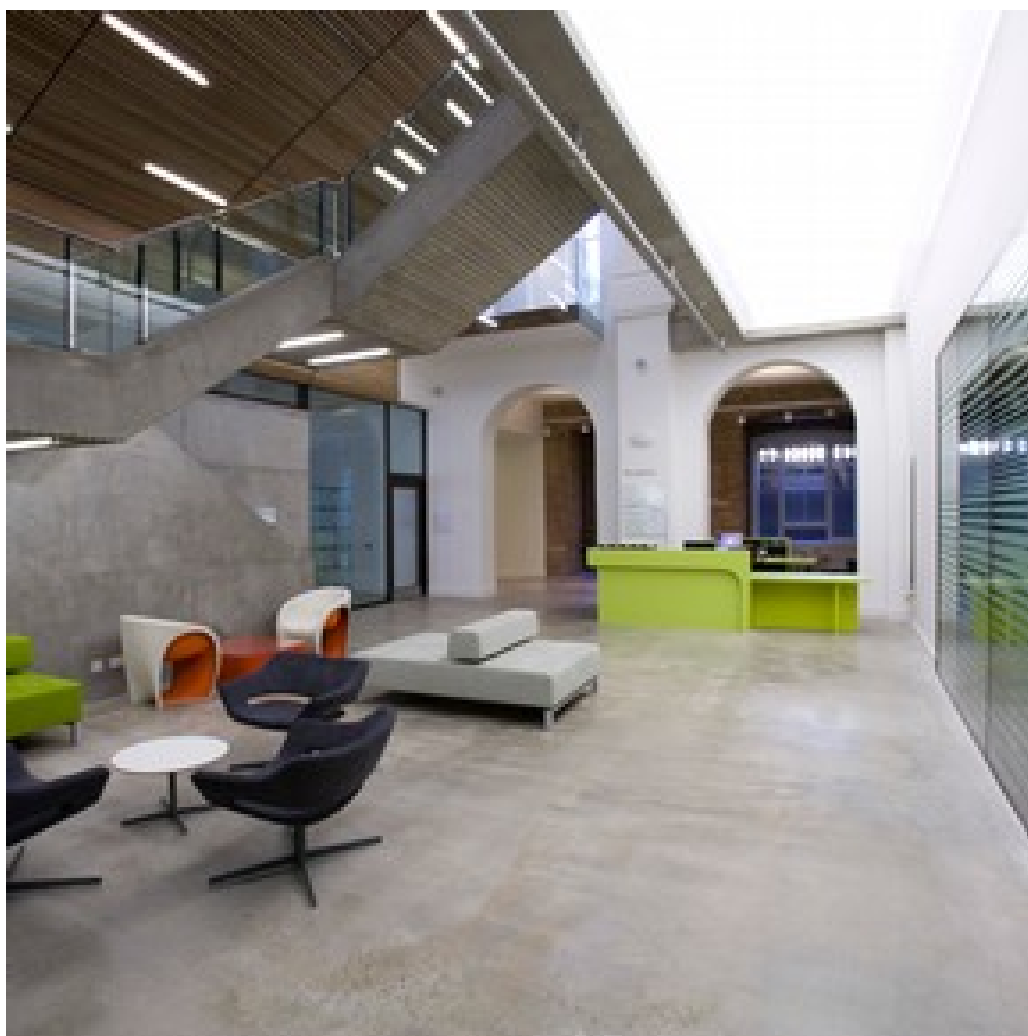


OPPORTUNITIES > Sound art residency at Victoria and Albert Museum
London

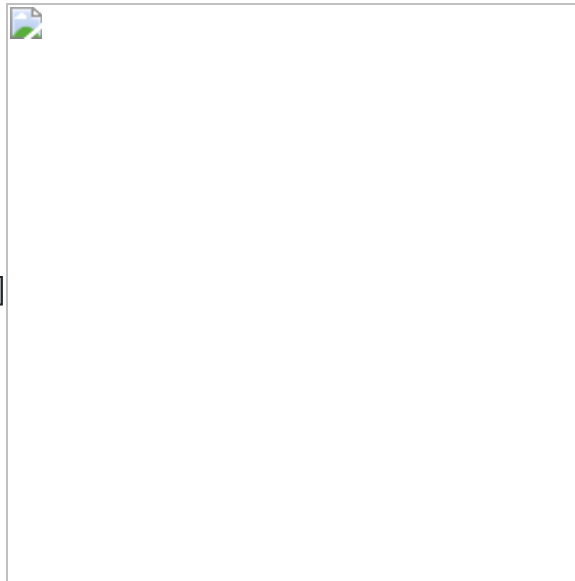
DEADLINE
20 JUL 2011

Sound art residency at Victoria and Albert Museum London



[caption id="attachment_13003" align="alignright" width="290"
caption="Foyer of the Sackler Centre for arts education at the V&A,

opened 2008"]



[/caption]

The **V&A** is inviting applications from UK based and international early - mid career sound artists and artists with an interest in sound who wish to develop their practice through working with the V&A's Middle Eastern collections, specifically the Iranian, Afghan and/or Central Asian material.

The selected artist should also engage in the public participatory programmes that the Museum runs. The Residency will be based in the **Sackler Centre for arts education** at the V&A, and is part of a wider residency programme. It will take place in London over a six-month period from January – June 2012.

The residency is open to UK-based and international sound artists. It will provide a monthly bursary (taxable) and there is extra budget for materials. A team, drawn from the Museum's staff and the ERCG membership will provide support throughout the project. The successful candidate will use the resources of the Museum and will also welcome the opportunity to actively work on projects with the public, and present and interpret their work to the public. Applicants should have a track record of development and regular exposure of new work.

The Sackler Centre for arts education at the V&A, has two studios for Museum Residencies to be occupied by artists/ craftspeople/ designers/ writers/ performers/ architects/ film and video makers etc. There are 4 residencies of 6 months (26 weeks) each year. This programme is integral to the philosophy of the Sackler Centre, helping to make it a dynamic, creative space.

Eligibility criteria

The Museum is looking for artists whose work is rooted in the exploration and experimentation of sound and sonification. Their background can be in disciplines of sound practices and music, visual art, moving image, literature, textile, composition, performance, live arts etc. We are particularly keen to appoint a range of artists from diverse backgrounds.

Applicants should be dynamic, ambitious and inspiring, pushing forward the boundaries of creative practices. We are looking for applicants who are keen to develop new work and are interested in displaying / installing work in the public spaces in and around Exhibition Road and its member institutions.

Note: the residency is based at the V&A (Victoria and Albert) Museum in London. Potential applicants must be available for interview on 11 August as per application guidelines.

DEADLINE: 20 July

This opportunity came via **Khoj** (Thanks!)

SIMILAR CONTENT

DEADLINE
20 JUN 2011

France | CAMAC residency | call for artists



RESIDENCIES
FRANCE

DEADLINE
01 SEP 2017

Delfina London | residency call for Indonesian artist



RESIDENCIES
INDONESIA UNITED KINGDOM

DEADLINE
05 AUG 2021

Making Matters X Levi's Digital Residency



OPEN CALLS
FRANCE GREECE ITALY NETHERLANDS POLAND PORTUGAL ROMANIA SPAIN SWEDEN
UNITED KINGDOM

DEADLINE
31 AUG 2015

Indonesian Curatorial Residency in London

OPEN CALL

RESIDENCIES

DEADLINE

31 OCT 2011

Natural History Museum London | residency for
India-based artist



RESIDENCIES

INDIA UNITED KINGDOM

DEADLINE

06 MAR 2023

London | Gasworks residency for artists based in
Pakistan



RESIDENCIES

PAKISTAN UNITED KINGDOM

WEBSITE

[HTTP://WWW.PEOPLEBANK.COM/PBANK/OWA/PBK24W12.MAIN?](http://www.peoplebank.com/pbank/owa/pbk24w12.main?P=DDFGNUOKCGCIKEGMJBDFBFBGJKEFNZOBIDNSO3AKN3O3AKNAOCFFCBGLN)

[P=DDFGNUOKCGCIKEGMJBDFBFBGJKEFNZOBIDNSO3AKN3O3AKNAOCFFCBGLN](http://www.peoplebank.com/pbank/owa/pbk24w12.main?P=DDFGNUOKCGCIKEGMJBDFBFBGJKEFNZOBIDNSO3AKN3O3AKNAOCFFCBGLN)

COUNTRIES

ASIA UNITED KINGDOM

THEMES

ART AND ENVIRONMENT MUSEUMS

DISCIPLINES

FILM LITERATURE MUSIC NEW MEDIA VISUAL ARTS

ABOUT ASEF CULTURE360

culture360.asef.org brings Asia and Europe closer by providing information, facilitating dialogue and stimulating reflection on the arts and culture of the two regions.

[MORE ABOUT ASEF CULTURE360](#) | [FAQ](#) | [f](#) [X](#) [@](#)

This website was created and maintained with the financial support of the European Union. Its contents are the sole responsibility of the Asia-Europe Foundation (ASEF) and do not necessarily reflect the views of the European Union.



About us
Team
Partners
FAQ
Brand guidelines
How to partner with us
Contact us
#ASEFCulture