

## Privacy Settings

We use cookies to optimize our website and our service.

- ☒ Functional
- ☒ Statistics
- ☒ Marketing

Save

Functional only

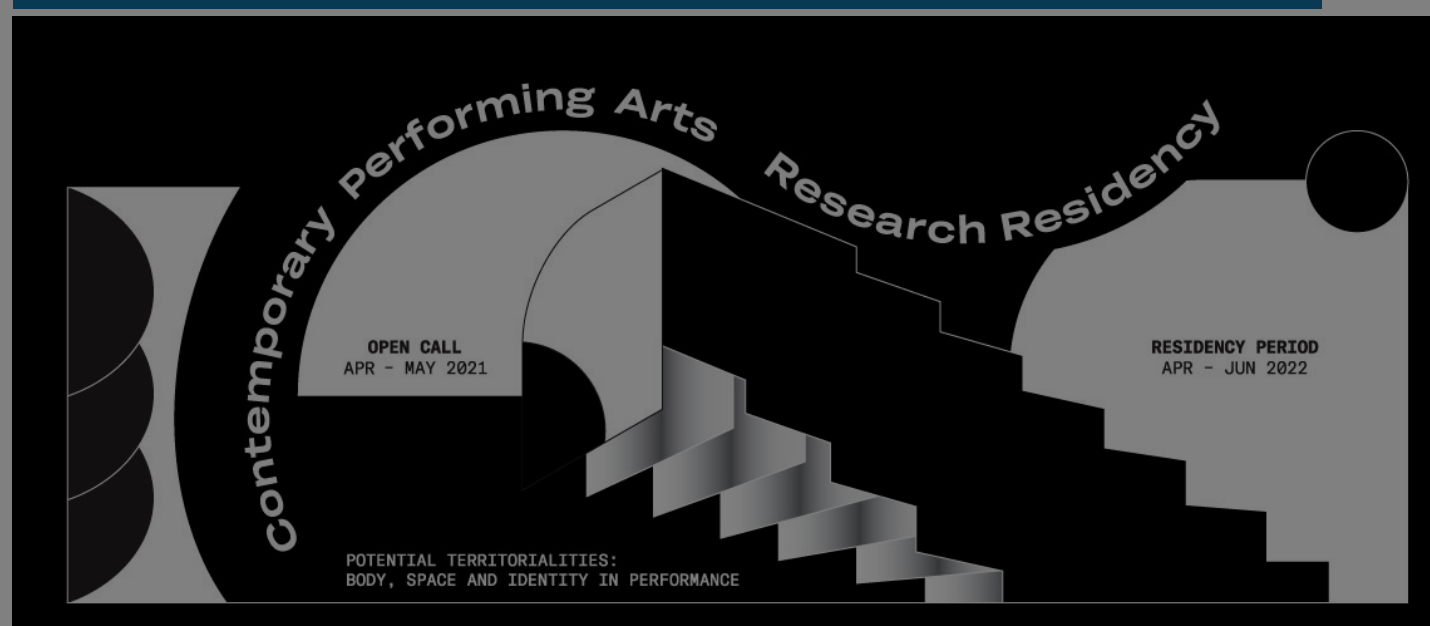
Accept all

WEBSITE  
[HTTPS://WWW.ESPLANADE.COM/GET...](https://www.esplanade.com/getting-to-know-us)

COUNTRIES  
[INTERNATIONAL](#) [SINGAPORE](#)

DISCIPLINES  
[LITERATURE](#) [PERFORMING ARTS](#)

# Contemporary Performing Arts Research Residency



Esplanade – Theatres on the Bay invites artists, curators, programmers, writers, researchers and practitioners across all disciplines in the performing arts to apply for its inaugural Contemporary Performing Arts Research Residency, taking place in Singapore between April and June 2022. The Contemporary Performing Arts Research Residency is a new artistic research development programme by Esplanade – Theatres on the Bay, supported by the National Arts Council, Singapore.

The residency invites individuals working and researching within any discipline(s) in the performing arts in Singapore and across the world to submit proposals that complement the conceptual lines set by the thematic focus alongside their artistic practice.

The fully-funded residency aims to support creative research in contemporary performing arts by providing its residents the time and space for artistic inquiry, experimentation, development, research activities and opportunities for interdisciplinary and transcultural dialogues. **The residency welcomes various manners and methodologies of enquiry, embracing a pluralistic approach towards research that unfolds not only through the written word, but also includes forms of experimentation with the body, performed moments, and other non-traditional systems of knowledge.**

There is no commitment for residents to create a production during or after the residency. Instead, residents will be asked to present at least one public programme of their choosing, developed in conversation with the Esplanade Team.

The residency offers two types of support: **Artist-in-Residence** and **Researcher-in-Residence**. Artists-in-Residence can apply for a residency period of one to three months, while Researchers-in-Residence can apply for a residency period of two to four weeks. All residents will receive either a stipend (for artists) or an allowance (for researchers), a shared-working space, studios when required, as well as accommodation and international travel to and from Singapore, if from abroad.

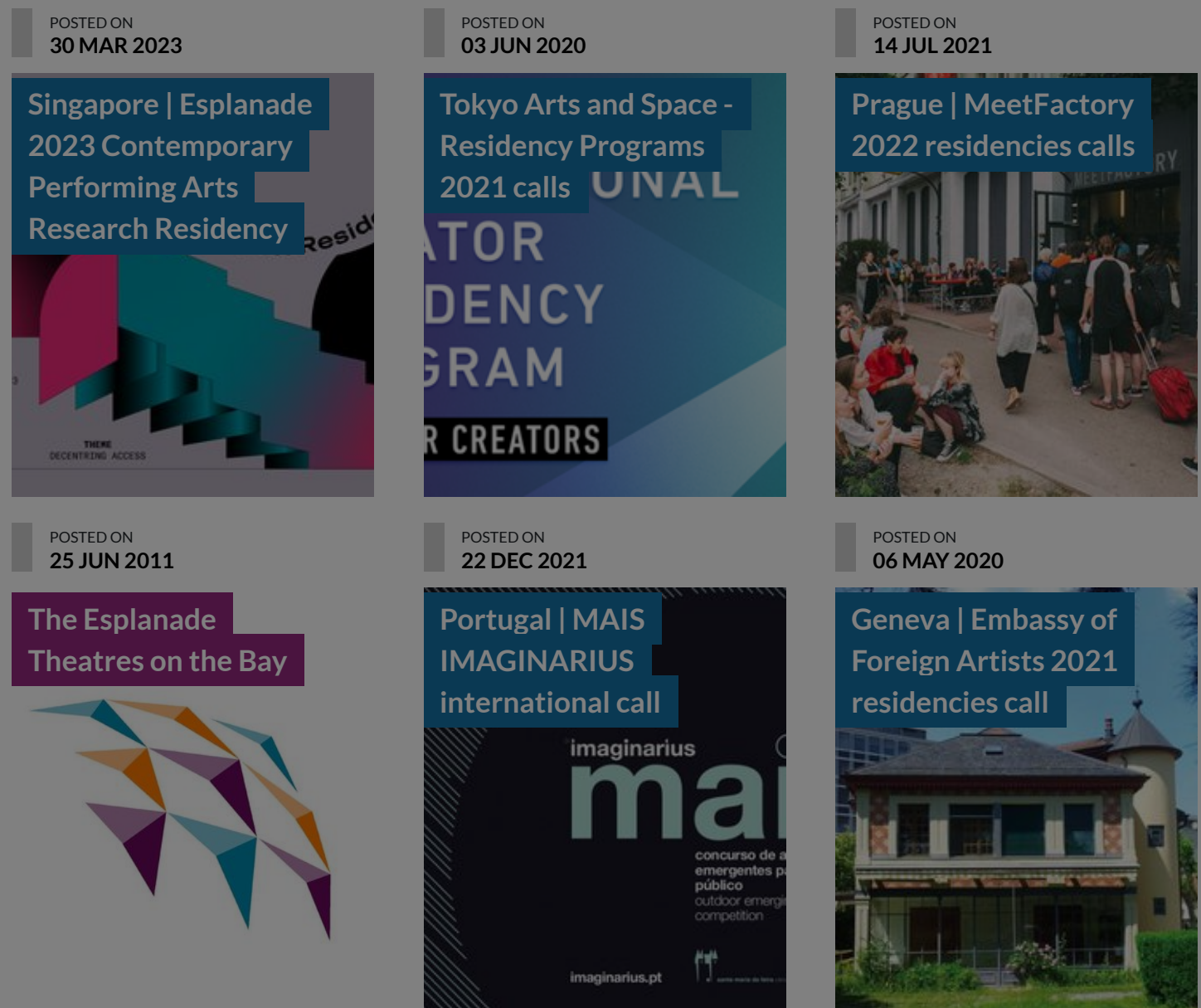
There will be annual open calls held for applications to the residency and each cycle will revolve around a thematic focus conceived to respond to current critical issues in our society. In 2022, the residency proposes the thematic focus *Potential Territorialities: Body, Space and Identity in Performance*.

Artists and Researchers-in-Residence are chosen through a Selection Panel comprising leading international curators, programmers, artists and managers. They have been appointed based on their thought-provoking practices, dynamic networks with practitioners from a wide variety of disciplines and their invaluable knowledge of the performing arts across Singapore, Asia and beyond. The Selection Panel will also serve as interlocutors in the programme's development and be available as consultants for all residents.

**Deadline: 31 May 2021, Mon, 11.59pm (GMT+8)**

Applications will be reviewed in Jun 2021 and the outcome will be announced in Jul 2021.

## Similar content



### ABOUT ASEF CULTURE360

[culture360.asef.org](http://culture360.asef.org) brings Asia and Europe closer by providing information, facilitating dialogue and stimulating reflection on the arts and culture of the two regions.

[MORE ABOUT ASEF CULTURE360](#) | [FAQ](#)

