

## Privacy Settings

We use cookies to optimize our website and our service.

- ☒ Functional
- ☒ Statistics
- ☒ Marketing

Save

Functional only

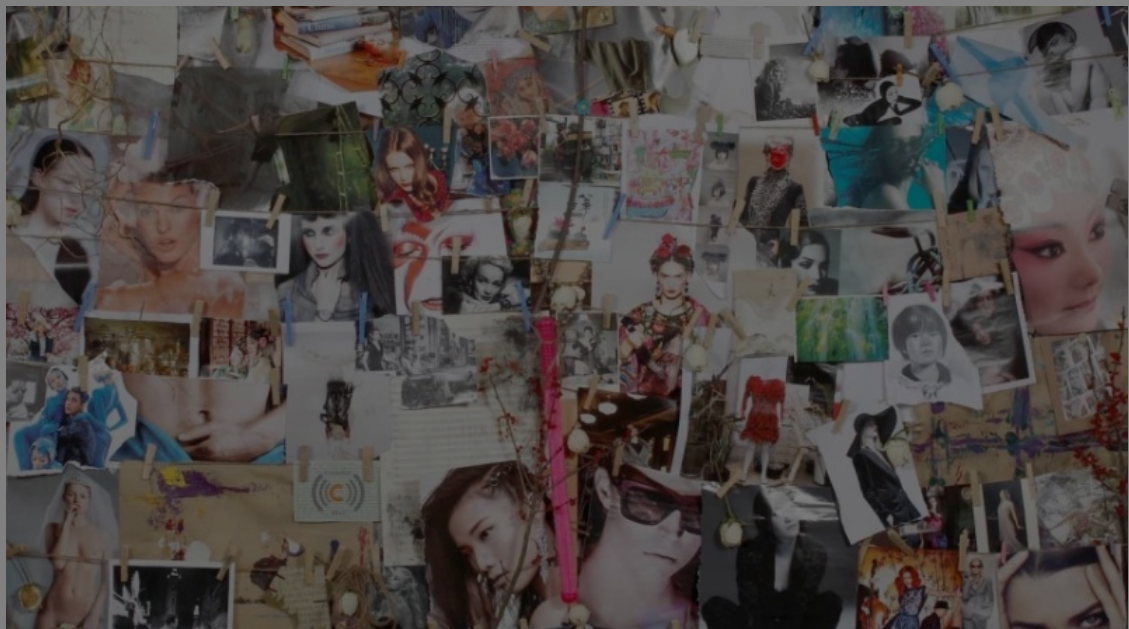
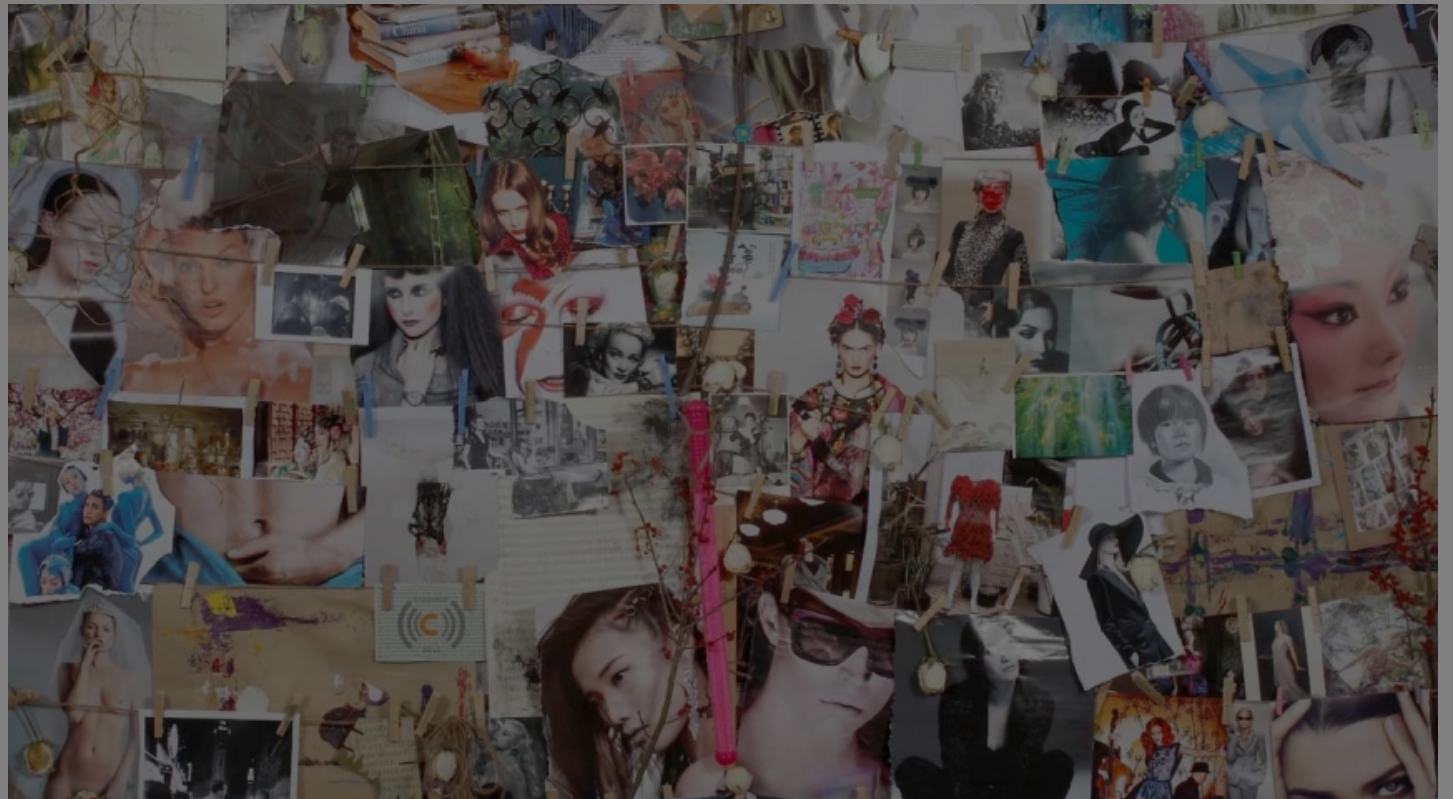
Accept all

WEBSITE  
[HTTP://WWW.SWATCH-ART-PEACE-  
HOTEL.COM](http://www.swatch-art-peace-hotel.com)

COUNTRIES  
[CHINA](#) [INTERNATIONAL](#)

DISCIPLINES  
[DANCE](#) [FILM](#) [LITERATURE](#) [MUSIC](#)  
[PHOTOGRAPHY](#) [VISUAL ARTS](#)

# Swatch Art Peace Hotel artist residency programme



The [Swatch Art Peace Hotel Artist Residency](#) invites artists from around the world to apply online for a residency in Shanghai. **Different forms of art are welcome** to explore the contemporary arts in China's most vibrant city: dancing, music, photography, filmmaking, writing, painting and conceptual art.

The Swatch Art Peace Hotel is proud to offer the selected candidates some artistic 'time out' in its unique Artist Residency in one of the most dynamic and fast-moving cities of the contemporary world.

Only online applications are accepted. **There are no application deadlines.**

The applications are reviewed by an international committee whose efforts ensure that a broad range

of artistic disciplines, styles and national origins is represented. The selection process aims to integrate artists in a spirit of openness and curiosity about creativity in its diverse forms and contexts.

This exciting project is based on a shared love of the universal nature of the arts in all their forms and a desire to promote cross cultural exchanges so as to enrich personal experience and creativity.

**Known and unknown artists** are invited to stay for a period of up to six months in one of the 18 studios. They meet to exchange ideas, prepare and enjoy meals together, talk about their work and life in Shanghai, plan new projects and share their visions.

The program offers assistance when applying for a visa and covers among others **travel costs** (one round flight) to Shanghai.

Find all the information [online](#).

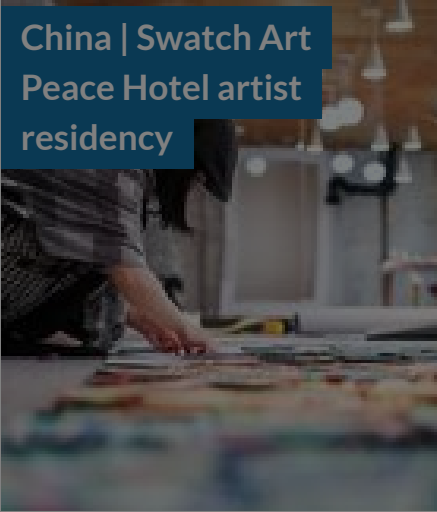
**There is no deadline for applications.**

*Image:* © 2011 The Swatch Group Ltd

## Similar content

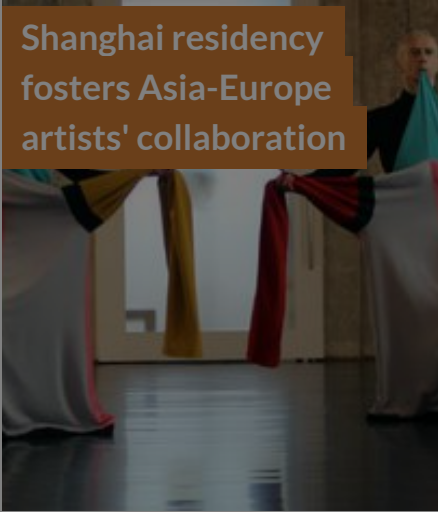
POSTED ON  
04 APR 2024

China | Swatch Art  
Peace Hotel artist  
residency



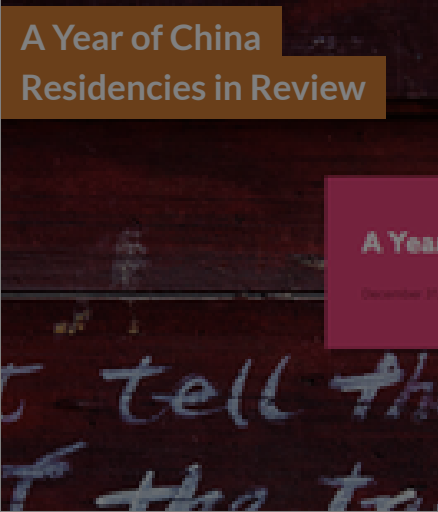
POSTED ON  
28 MAR 2013

Shanghai residency  
fosters Asia-Europe  
artists' collaboration




POSTED ON  
29 JAN 2015

A Year of China  
Residencies in Review



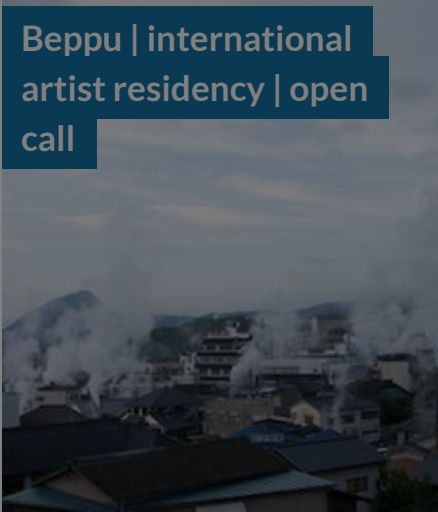
POSTED ON  
21 NOV 2012

Copenhagen | Human  
Hotel | call for  
experimental  
residency



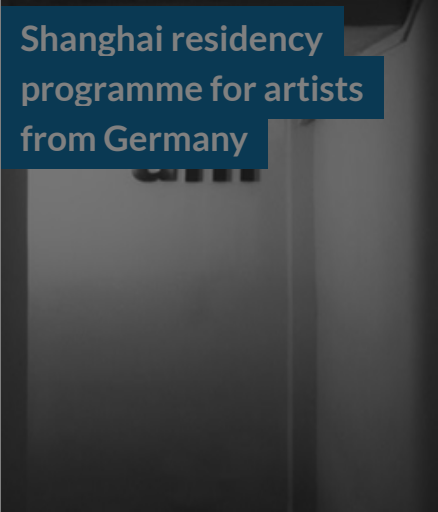
POSTED ON  
22 OCT 2012

Beppu | international  
artist residency | open  
call



POSTED ON  
16 OCT 2013

Shanghai residency  
programme for artists  
from Germany



### ABOUT ASEF CULTURE360

[culture360.asef.org](#) brings Asia and Europe closer by providing information, facilitating dialogue and stimulating reflection on the arts and culture of the two regions.

[MORE ABOUT ASEF CULTURE360](#) | [FAQ](#)

