

**OPPORTUNITIES** > Prague | ANEMIC Festival of New Media Art and Independent Film | open call

DEADLINE  
16 OCT 2011

## Prague | ANEMIC Festival of New Media Art and Independent Film | open call



Open Call for ANEMIC Contemporary & New Media Art Festival in Czech Republic - independent film and multi-disciplinary artists invited to apply in many categories.

**ANEMIC Festival** is dedicated to the discovery of independent film directors and emergent artists. Through its program, the festival seeks to discover, support, and inspire independent film and multi-disciplinary artists around the world, and to introduce audiences to their new creation.

ANEMIC presents a fresh and multi-disciplinary program composed by feature, documentary and short films, digital poetry, video art, animations, interactive installations, audio-visual performances, public discussions and meetings with artists. In November 2010, for its first year, the festival took place without any grants. Thanks to the generous support from our partners, artists and so precious volunteers.

---

## SIMILAR CONTENT

POSTED ON  
25 OCT 2018

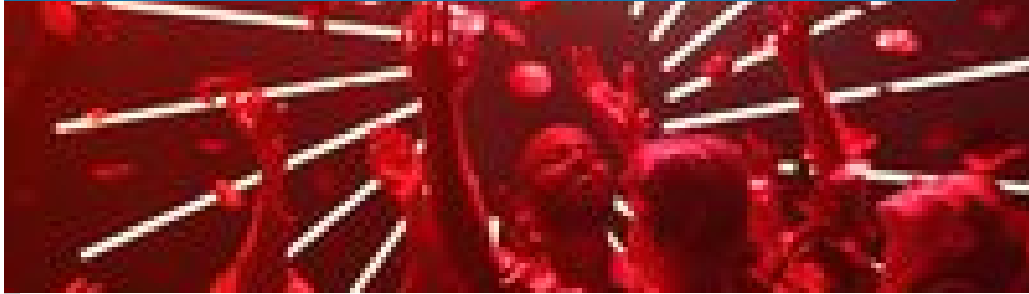
**CRACK Bangladesh**



**ORGANISATIONS DIRECTORY**  
**BANGLADESH**

DEADLINE  
01 DEC 2020

## PhD research fellow at The Academy of Dance, Oslo



FROM - TO

15 DEC 2023 - 23 DEC 2023

## Serendipity Arts Festival 2023



EVENTS

INDIA

FROM - TO

21 JUL 2011 - 07 AUG 2011

## Invention & Intervention | Hong Kong new media art



EVENTS

ASIA CHINA

POSTED ON  
01 JUN 2017

## Arts Council of Mongolia celebrates 15th anniversary



NEWS  
MONGOLIA

DEADLINE  
30 NOV 2014

## Carpe diem artist and writer residencies in India



RESIDENCIES  
INDIA INTERNATIONAL

WEBSITE  
[HTTP://WWW.ANEMICFESTIVAL.CZ/?PAGE\\_ID=28&LANG=EN](http://www.anemicfestival.cz/?PAGE_ID=28&LANG=EN)

COUNTRIES  
CZECH REPUBLIC INTERNATIONAL

DISCIPLINES

## ABOUT ASEF CULTURE360

**culture360.asef.org** brings Asia and Europe closer by providing information, facilitating dialogue and stimulating reflection on the arts and culture of the two regions.

**MORE ABOUT ASEF CULTURE360 | [FAQ](#) | [f](#) [X](#) [@](#)**

This website was created and maintained with the financial support of the European Union. Its contents are the sole responsibility of the Asia-Europe Foundation (ASEF) and do not necessarily reflect the views of the European Union.



About us

Team

Partners

FAQ

Brand guidelines

How to partner with us

Contact us

#ASEFCulture