

Privacy Settings

We use cookies to optimize our website and our service.

- ☒ Functional
- ☒ Statistics
- ☒ Marketing

Save

Functional only

Accept all

2020-21



Under the Performing Arts Japan Programme for Europe (PAJ Europe), the Japan Foundation is now accepting proposals for projects, which take place between 1st April 2020 and 30th June 2021, for Touring and Collaboration grants.

Performing Arts Japan Programme for Europe (PAJ Europe) was started by the Japan Foundation in 2006 to revitalise and facilitate the exchange between leading artists in Europe and Japan. The main feature of this scheme is that this grant will be made available to those organisers based in Europe who are planning to organise Japan-related performing arts projects in European regions. The applications will be screened by an annually appointed panel of advisors who are specialists in the area of performing arts in Europe. Successful applicants will receive grants towards part of the cost of implementing their project.

To date, PAJ Europe has funded 155 projects (including 81 touring and 74 collaboration projects) of Japanese performing arts in both traditional and contemporary art forms. In the 2019-2020 fiscal year, 12 projects (6 Touring and 6 Collaboration projects) were selected under the programme, for a total amount of €145,670.

The PAJ Europe programme comprises of the following two categories:

TOURING GRANT: assists the presentation process of Japan-related performing arts projects in which the Japanese artist is included in the tour at multiple cities in Europe, with emphasis on locations outside major capital cities where there is no regular exposure to Japanese performing arts. Please note: The PAJ definition of 'Touring' means a project that is presented as one continuous tour without large gaps of time between performances.

COLLABORATION GRANT: assists the development stage of a project in which Japanese and European artists work collaboratively in order to create a new work through research, residencies, artists' discussions etc., that has the potential of being developed into a touring project in the future, enhancing the understanding of Japanese culture when presented to European audiences.

Applications can be accepted from performing arts-related organisations, such as festivals, theatres, or arts promotion companies which are based in the list of eligible PAJ European countries: Albania, Andorra, Austria, Belgium, Bosnia and Herzegovina, Bulgaria, Croatia, Cyprus, Czech, Denmark, Estonia, Finland, France, Germany, Greece, Hungary, Iceland, Ireland, Italy, Kosovo, Latvia, Liechtenstein, Lithuania, Luxembourg, North Macedonia, Malta, Moldova, Montenegro, Monaco, the Netherlands, Norway, Poland, Portugal, Romania, San Marino, Serbia, Slovakia, Slovenia, Spain, Sweden, Switzerland, the United Kingdom, Vatican City.

Grant Coverage (Part of the following expenses):

a) Expenses for invited Japanese artists/professionals:

- International airfare (discounted economy class)
- Travel costs within Europe
- Lodging and Per Diems
- Freight

b) Expenses for the Translator/Interpreter:

- Translation and interpreting costs (between Japanese and European languages) related to the project

Deadline: 31 October 2019

NOTE: applications must be submitted to the relevant Japan Foundation office in Europe - see guidelines for all details.

SIMILAR CONTENT

DEADLINE
31 OCT 2017

Performing Arts Japan Programme for Europe | PAJ Europe call

OPEN CALLS
EUROPE JAPAN

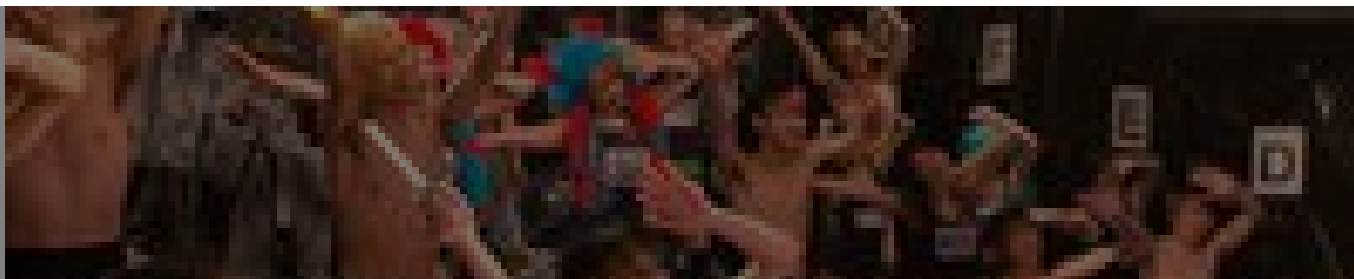
DEADLINE
30 OCT 2014

Performing Arts Japan Programme for Europe | PAJ Europe 2015-16

GRANTS
EUROPE JAPAN

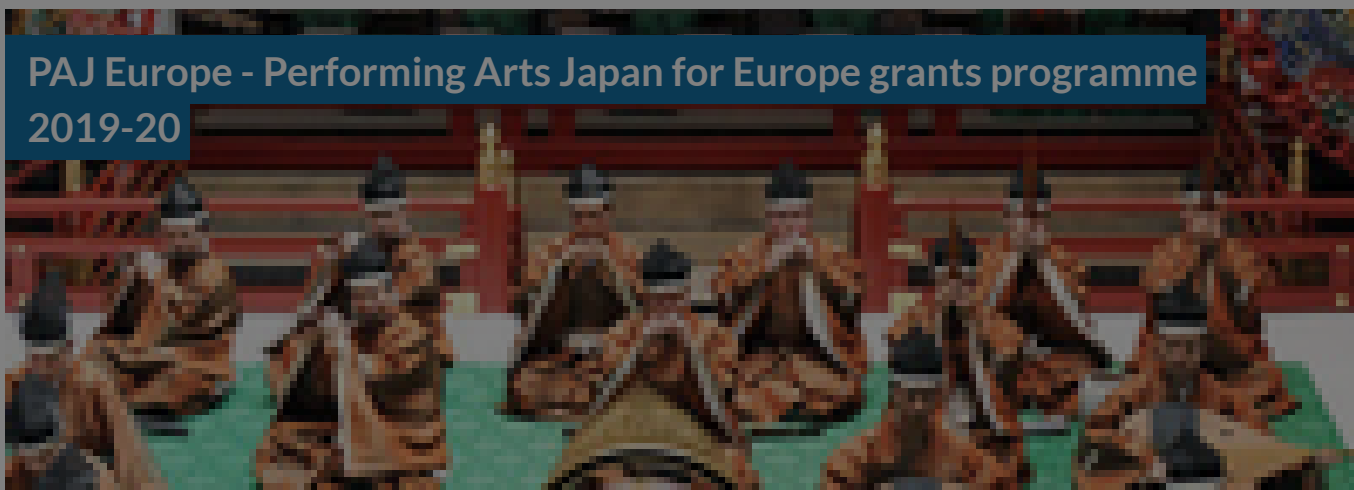
DEADLINE
31 OCT 2013

Performing Arts Japan (PAJ) Programme for Europe



DEADLINE
31 OCT 2018

PAJ Europe - Performing Arts Japan for Europe grants programme 2019-20



GRANTS
EUROPE JAPAN

DEADLINE
31 OCT 2016

Performing Arts Japan Programme for Europe 2017-18



OPEN CALLS
EUROPE JAPAN

DEADLINE
30 OCT 2015

Performing Arts Japan for Europe | PAJ Europe 2016-17 call



GRANTS

EUROPE JAPAN

WEBSITE

[HTTPS://JPF.ORG.UK/CMS/FILES/PAJ-2020-2021-GUIDELINES.PDF](https://jpf.org.uk/cms/files/paj-2020-2021-guidelines.pdf)

COUNTRIES

EUROPE JAPAN

THEME

CULTURAL RELATIONS

DISCIPLINE

PERFORMING ARTS

ABOUT ASEF CULTURE360

culture360.asef.org brings Asia and Europe closer by providing information, facilitating dialogue and stimulating reflection on the arts and culture of the two regions.

MORE ABOUT ASEF CULTURE360 | [FAQ](#) | [f](#) [X](#) [@](#)

This website was created and maintained with the financial support of the European Union. Its contents are the sole responsibility of the Asia-Europe Foundation (ASEF) and do not necessarily reflect the views of the European Union.



About us

Team

Partners

FAQ

Brand guidelines

How to partner with us

Contact us

#ASEFCulture

