

Privacy Settings

We use cookies to optimize our website and our service.

- ☒ Functional
- ☒ Statistics
- ☒ Marketing

Save

Functional only

Accept all

mobile residency



"IN ACTION"

OPEN CALL Artist-in-Residence Program 2017

MOVE ARTS JAPAN - Call for International applicants for a 7 week mobile residency in Japan in November/December 2017. This year, 3 artists from abroad will be invited to experience a seven week residency in various different residency localities in Japan, each ending in a three-week residency, presentation and exhibition at 3331 Arts Chiyoda in Tokyo. Participating curators from residencies in Korea and Taiwan will nominate an artist from their respective countries. The third artist will be selected via a worldwide open call.

This is a unique mobile residency in Japan. As its concept, Move Arts Japan proposes a "migration model" of AIR program, where one artist can experience several sequential residencies throughout Japan.

Applicants must be FULLY available for the entire residency period: 1 November - 22 December 2017

Participants are able to visit several Japanese artist-in-residence programs associated with Move Arts Japan. Please note that in order to determine final itineraries, participants and Move Arts Japan coordinators will discuss requested destinations and the accessibility of residences over Skype meetings and emails during September and October 2017.

Support provided for artists

- Travel expenses including round-trip airfare and travel expenses on public transportation between the station nearest each residency within Japan (Move Arts Japan will make a reservation and purchase flight tickets to and within Japan). Flight to Japan, travel within Japan.
- Accommodation, workspace
- Per-diem (424,500 JPY) Total of daily expenses from November 1st to December 22nd.
- Production costs (Maximum 60,000 JPY)
- Research costs (Maximum 60,000 JPY)
- Coordination/interpretation support (Event translation, consultation)
- Opportunity to presentation research/work at the end of residency
- Opportunities to interact with Japanese artists and community at a local level

Conditions of participation

- Reside outside of Japan and be a citizen of a country other than Japan
- Be able to speak either English or Japanese at a conversational level
- Be in good health for intensive travel
- Have access to the equipment necessary to participate in a remote interview (i.e. a computer capable of connecting to the internet and using Skype)

Deadline: August 14th 2017

SIMILAR CONTENT

DEADLINE
10 AUG 2018

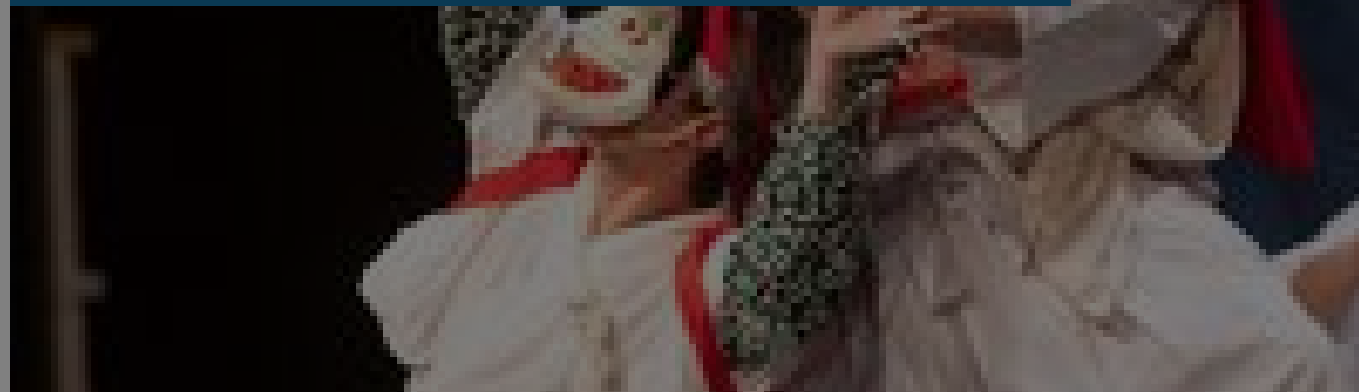
Japan - AIR Z Artist In Family residency

OPEN CALL "Artist In Family

RESIDENCIES
INTERNATIONAL JAPAN

DEADLINE
02 DEC 2022

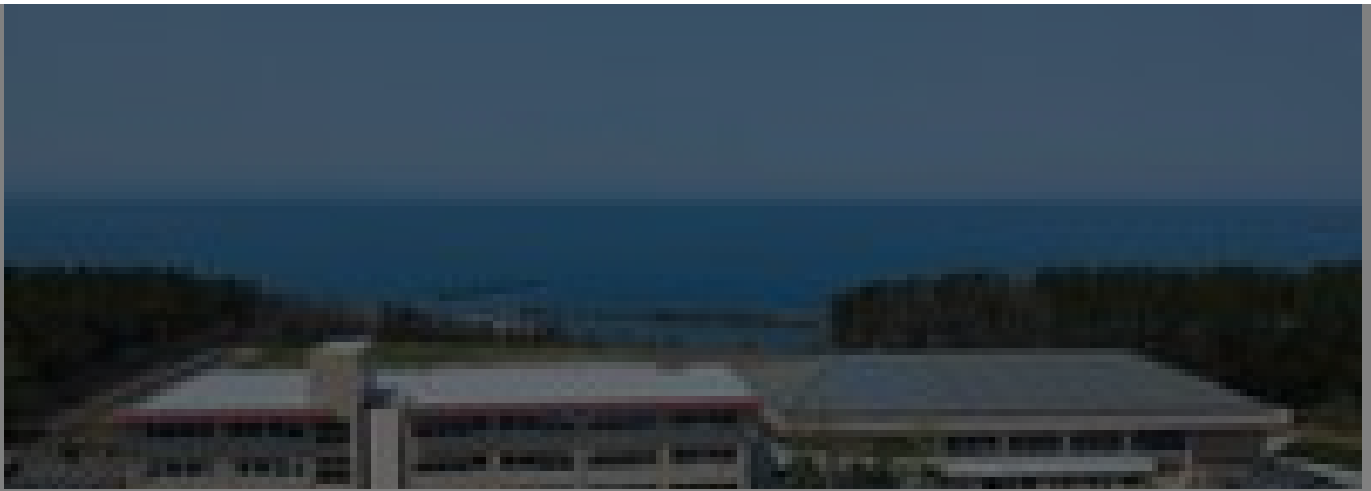
Japan Foundation Arts and Cultural Exchange grants 2023



GRANTS
ASIA INTERNATIONAL JAPAN

DEADLINE
16 FEB 2024

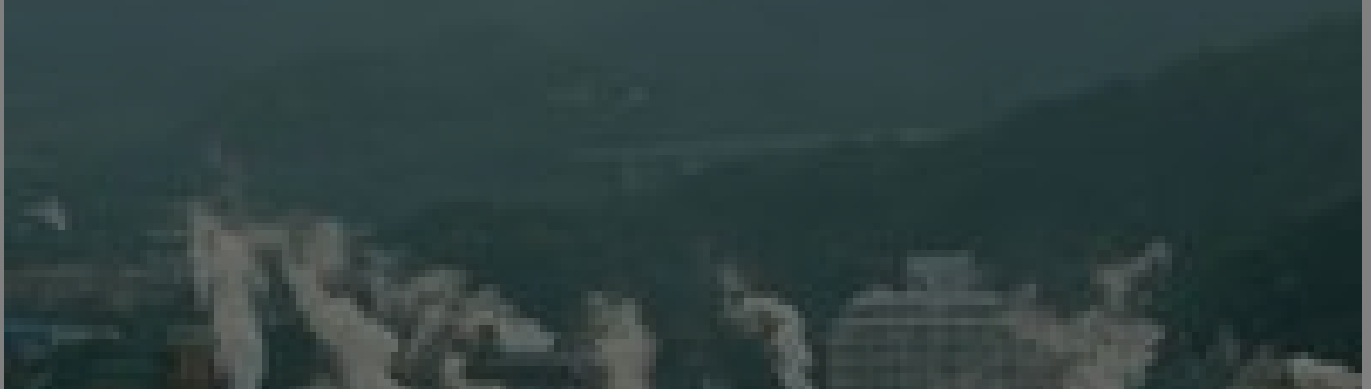
Japan | YUI – PORT Artist-in-Residence 2024



RESIDENCIES
INTERNATIONAL JAPAN

DEADLINE
29 JUL 2014

Kashima 2014 international residency programme | Beppu, Japan



RESIDENCIES
INTERNATIONAL JAPAN

DEADLINE
28 APR 2024

Japan | Aomori Contemporary Art Centre Artist in Residence 'Spinning Scapes'



RESIDENCIES
INTERNATIONAL JAPAN

DEADLINE
19 SEP 2017

Japan Residency Program for Overseas Media Arts Creators 2018

Arts Ci

RESIDENCIES
INTERNATIONAL JAPAN

WEBSITE
[HTTPS://MOVEARTS.JP/OPENCALL2017](https://movearts.jp/opencall2017)

COUNTRIES
INTERNATIONAL JAPAN

THEME
ART AND ENVIRONMENT

DISCIPLINES
NEW MEDIA VISUAL ARTS

ABOUT ASEF CULTURE360

culture360.asef.org brings Asia and Europe closer by providing information, facilitating dialogue and stimulating reflection on the arts and culture of the two regions.

MORE ABOUT ASEF CULTURE360 | [FAQ](#) | [f](#) [X](#) [@](#)

This website was created and maintained with the financial support of the European Union. Its contents are the sole responsibility of the Asia-Europe Foundation (ASEF) and do not necessarily reflect the views of the European Union.



About us
Team
Partners

[FAQ](#)
[Brand guidelines](#)
[How to partner with us](#)
[Contact us](#)
[#ASEFCulture](#)

ASIA-EUROPE FOUNDATION (ASEF) 2017 | [TERMS OF SERVICE & PRIVACY POLICY](#) | [CREATIVE COMMONS
ATTRIBUTION - NON COMMERCIAL SHARE](#)