

## Privacy Settings

We use cookies to optimize our website and our service.

- ☒ Functional
- ☒ Statistics
- ☒ Marketing

Save

Functional only

Accept all

Exchange Fund

Lên chương trình tại Am Thanh Hà Nội 2010

# Không gian Xanh

Am Thanh Hà Nội 2010  
greenspace



With the performance of 80 artists from 14 countries:

Với các tiết mục biểu diễn của 80 nghệ sỹ từ 14 quốc gia:

Robert Menke, Treasur Club, Alec Millan, The Six Tones, Jamie Lloyd, Dickson Dee, Fredrikson, Linh Dung, Vũ Nhật Tân, DJ Tommy và các DJ trẻ của Việt Nam  
and many other artists/very nhiều nghệ sỹ khác...

\* 2 Stages with different performances from 9.00 to 13.00

2 Sân khấu với nhiều phần biểu diễn khác nhau từ 9.00 đến 13.00

\* Environmental activities/ Các hoạt động vì môi trường

\* Workshops/Hội thảo

\* Movie/Phim

Date/ ngày: 26, 27, 28/03/2010

Venus/Địa điểm: Giảng Võ Exhibition centre/Trên sân Giảng Võ - Sơ Đình - Hà Nội

Am Thanh Hà Nội 2010  
Am Thanh Hà Nội 2010



MAH

**Website:** <http://www.ambhanoi.um.dk/>

**The Cultural Development and Exchange Fund (CDEF)** provides support to contemporary artists and cultural performances in Vietnam and to cultural exchange activities between Denmark and Vietnam.

Support may be given to projects with the objective of:

- Presenting Danish culture in Vietnam for the purpose of enhancing and inspiring Vietnam's arts and culture through development of partnerships between Danish and Vietnamese artists, and to stimulate mutual inspiration and exchange of experiences between artists from both countries.
- Presenting Vietnamese culture to the Danish public for inspiration, enrichment and understanding and enhancing dialogue and tolerance through performance by Vietnamese artists in Denmark alone or with Danish participation.
- Presenting events and festivals in Vietnam with an art development perspective by Vietnamese artists alone or with Danish participation.

For a full description of the CDEF, please refer to the links on the Website.

### **Eligible applicants**

Danish as well as Vietnamese individuals or organisations may apply for support to projects. In cases where an individual or a group of individuals seek support, a CV along with relevant documents or material (for instance, copy of reviews, educational certificates, recording of previous productions on CD, DVD etc.) must be enclosed.

### **Closing dates for applications**

It is possible to apply for support from CDEF three times a year:

15 January

15 June

15 September

See website for application guidelines and forms.

---

A second fund: **The Danish Vietnamese Regional and Ethnic Cultural Fund**, was established in November 2006 with the objective of providing support to cultural diverse areas of Vietnam. The aim is to preserve the traditional culture, values and identities, especially amongst ethnic minorities. Applicants must be a Vietnamese citizen or permanent resident of Vietnam. This fund is separate from CDEF and has different guidelines and application procedures.

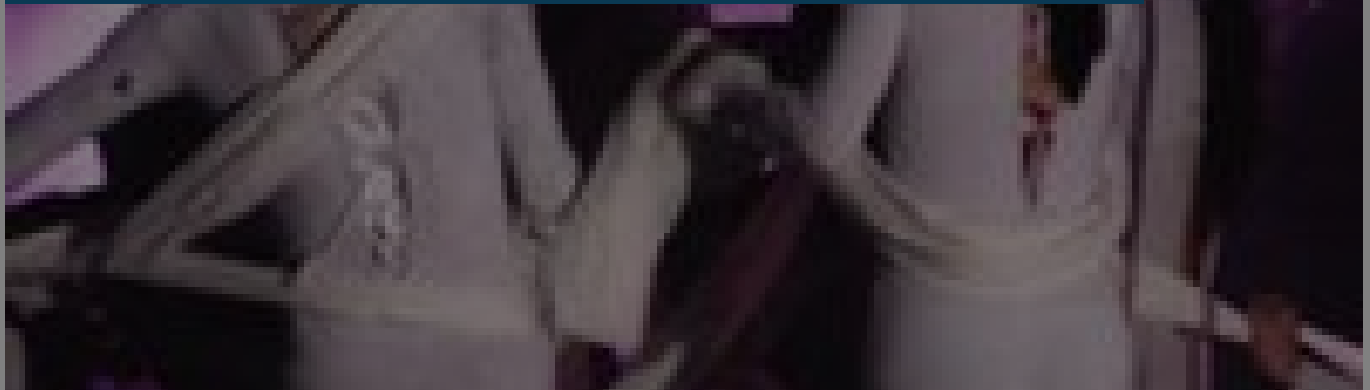
Further information on: [The Danish Vietnamese Regional and Ethnic Cultural Fund](#)

---

## SIMILAR CONTENT

DEADLINE  
15 MAY 2013

### Denmark-Vietnam | Cultural Development and Exchange Fund



GRANTS  
DENMARK VIET NAM

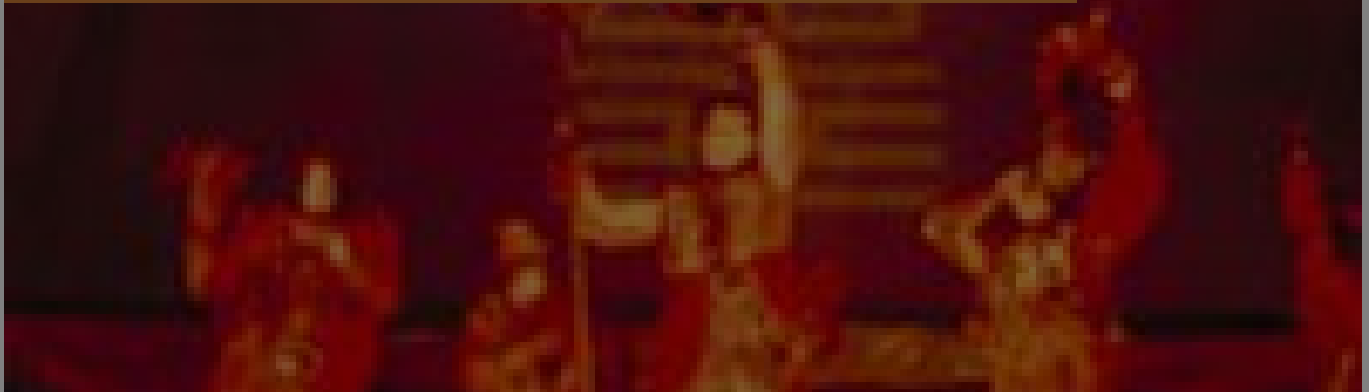
DEADLINE  
15 SEP 2011

### Denmark-Vietnam Cultural Development and Exchange Fund



POSTED ON  
01 JUL 2011

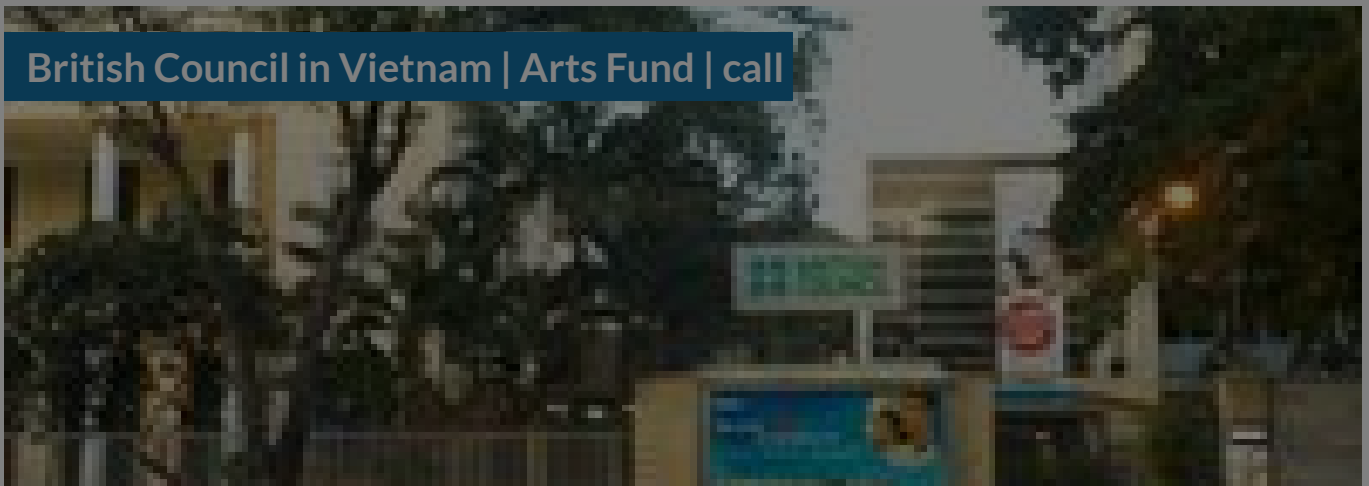
## Cultural ties between Vietnam and Denmark strengthened



NEWS  
DENMARK VIET NAM

DEADLINE  
15 SEP 2011

## British Council in Vietnam | Arts Fund | call



GRANTS  
ASIA EUROPE UNITED KINGDOM VIET NAM

DEADLINE  
20 JAN 2012

## British Council Vietnam Art Fund | extended deadline



### GRANTS

ASIA UNITED KINGDOM VIET NAM

BY FLORENT PETIT

29 OCT 2014

## The Danish Agency for culture in Asia | Interview with Ulla Ronberg



### FEATURES

ASIA DENMARK

### COUNTRIES

DENMARK VIET NAM

### THEMES

ART AND ENVIRONMENT CULTURAL MANAGEMENT CULTURAL POLICY MUSEUMS

### DISCIPLINES

DANCE LITERATURE MUSIC NEW MEDIA PERFORMING ARTS THEATRE VISUAL ARTS

### ABOUT ASEF CULTURE360

[culture360.asef.org](http://culture360.asef.org) brings Asia and Europe closer by providing information, facilitating dialogue and stimulating reflection on the arts and culture of the two regions.

[MORE ABOUT ASEF CULTURE360](#) | [FAQ](#) | [f](#) [X](#) [@](#)

This website was created and maintained with the financial support of the European Union. Its contents are the sole responsibility of the Asia-Europe Foundation (ASEF) and do not necessarily reflect the views of the European Union.



[About us](#)

[Team](#)

[Partners](#)

[FAQ](#)

[Brand guidelines](#)

[How to partner with us](#)

[Contact us](#)

[#ASEFCulture](#)

ASIA-EUROPE FOUNDATION (ASEF) 2017 | [TERMS OF SERVICE & PRIVACY POLICY](#) | [CREATIVE COMMONS  
ATTRIBUTION - NON COMMERCIAL SHARE](#)