

## Privacy Settings

We use cookies to optimize our website and our service.

- ☒ Functional
- ☒ Statistics
- ☒ Marketing

Save

Functional only

Accept all



NY20+ in Chengdu Sichuan, China, is calling for applications from international artists in the fields of art and design for their international Artist Residency Programme.

Founded in 2008, the residency programme explores the Bashu Culture and Chengdu city, investigating the integration between the traditional and the modern. The residency programme facilitates the exploration of local arts and culture and it is committed to international art and culture exchanges.

The residency is for a minimum of 7 days.

## What is provided?

- Studio workspace
- Accommodation and food
- Technical assistance
- Exchange and promotion

It is expected that the selected artists will donate a piece of work to the residency.

[NY20+ artist residency application guidelines](#)

**Deadline: ongoing**

## SIMILAR CONTENT

DEADLINE  
31 DEC 2021

China | NY20+ art residency programme

RESIDENCIES  
CHINA INTERNATIONAL

DEADLINE  
25 FEB 2019

Chengdu | ARIE 2019 artist residency call

RESIDENCIES  
CHINA INTERNATIONAL

POSTED ON  
17 JUN 2022

China | A Guide to Studio Residency Partners

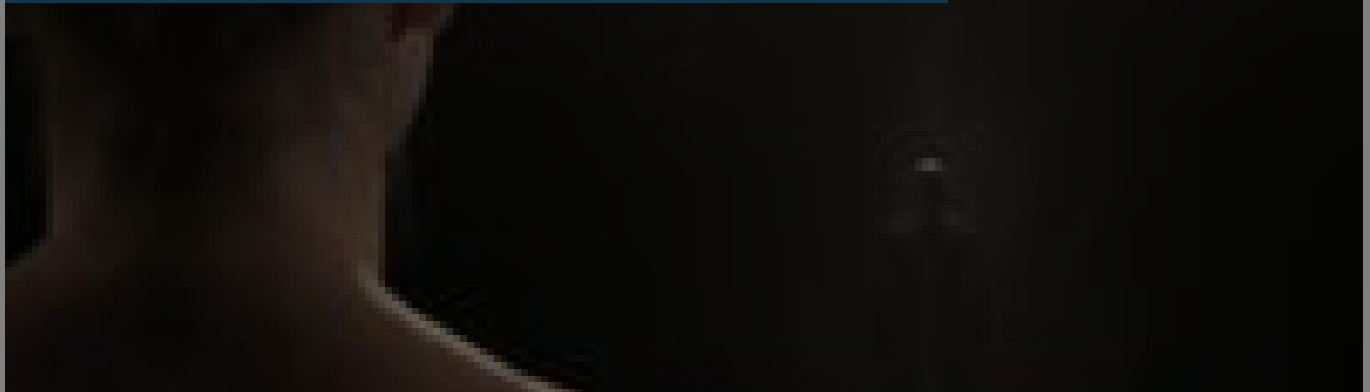


DEADLINE  
01 SEP 2017

Delfina London

OCAT New  
World Mu  
Hangzhou  
WANG De  
Korean  
The Ocat  
Art Center  
Three Sta  
graphic Ar  
Guangzhou  
Shanghai

## Delfina London | residency call for Indonesian artist



RESIDENCIES  
INDONESIA UNITED KINGDOM

DEADLINE  
31 MAY 2023

## Korea | Art Center Nabi Artist Residency 2023

OPEN CALL  
2023.4.3 - 5.3

RESIDENCIES  
INTERNATIONAL KOREA

FROM - TO  
12 OCT 2019 - 12 FEB 2020

## China | 2nd Anren Biennale

### EVENTS

CHINA INTERNATIONAL

### WEBSITE

[HTTP://WWW.NY20PLUS.COM/EN/H-COL-158.HTML](http://www.ny20plus.com/en/h-col-158.html)

### COUNTRY

CHINA

### THEME

HERITAGE

### DISCIPLINES

CRAFT VISUAL ARTS

### ABOUT ASEF CULTURE360

[culture360.asef.org](http://culture360.asef.org) brings Asia and Europe closer by providing information, facilitating dialogue and stimulating reflection on the arts and culture of the two regions.

**MORE ABOUT ASEF CULTURE360 | [FAQ](#) | [f](#) [X](#) [@](#)**

This website was created and maintained with the financial support of the European Union. Its contents are the sole responsibility of the Asia-Europe Foundation (ASEF) and do not necessarily reflect the views of the European Union.



About us  
Team  
Partners  
FAQ  
Brand guidelines

How to partner with us

Contact us

#ASEFCulture

ASIA-EUROPE FOUNDATION (ASEF) 2017 | [TERMS OF SERVICE & PRIVACY POLICY](#) | [CREATIVE COMMONS  
ATTRIBUTION - NON COMMERCIAL SHARE](#)