

Privacy Settings

We use cookies to optimize our website and our service.

- ☒ Functional
- ☒ Statistics
- ☒ Marketing

Save

Functional only

Accept all

WEBSITE
[HTTP://WWW.WSD2013.COM/SCENO](http://www.wsd2013.com/scenofest)

COUNTRIES
[INTERNATIONAL](#)
[UNITED KINGDOM](#)

THEME
[ART AND ENVIRONMENT](#)

DISCIPLINES
[DESIGN](#) [PERFORMING ARTS](#)

Stage Design

| call for applications



Companies and artists from the UK and around the world

are being invited to apply to bring performances to [Scenofest, WSD2013](#). Applications are encouraged from a broad range of work, and could include collective or solo shows, live art and installation, public participation pieces and everything in between.

Applications are welcome from practitioners at every stage in their career – from students through to established artists.

[WSD2013](#) is a celebration of International performance design from the world of theatre, opera and dance. The event will take place in Cardiff, UK in September 2013, hosted by the [Royal Welsh College of Music & Drama](#).

WSD2013 will feature Scenofest, an extraordinary performance and design festival with a diverse programme of events that will include live performances, lectures, workshops and seminars to be led by some of the most influential figures working in the Industry today.

Guidelines

- Proposed performances should be around 45 minutes in length. Each performance will be shown twice and companies should consider in addition, making a presentation or delivering a workshop that shares your process.
- Expressions of interest from designers / scenographers who take the lead in making work, and who create performance with the visual/object as their starting point whether as solo artists

or leaders of companies are encouraged

- Applicants should consider sustainability as being at the core of contemporary practice; This could be through innovative touring methods (bicycle, cart, on foot, virtual!), materials used, subject matter, theatre without walls (work that does not rely on a theatre building to be made), collaborative processes conducted over distance or sustaining a life long career.

Application deadline: 15 March 2013

Applicants will receive notification of selection in April 2013.

[Download application guidelines](#)

[Download technical guidelines](#)

There is a limited amount of bursary support for applicants.

Please contact performance@wsd2013.com with PERFORMANCE BURSARY in the subject box for further details.

Similar content

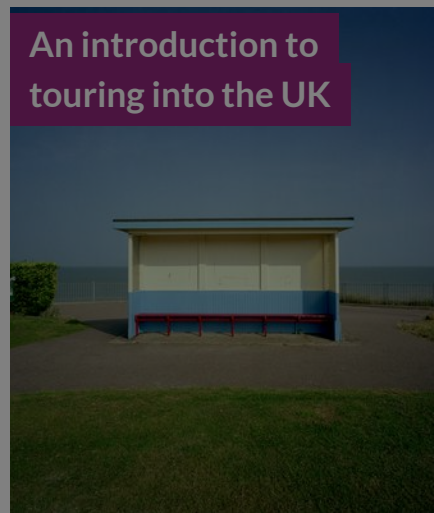
POSTED ON
18 JUN 2010

Call for workshop
leaders: Scenofest
Prague

ADRENNIAL OF PEI
ADRIENNALE SCENO

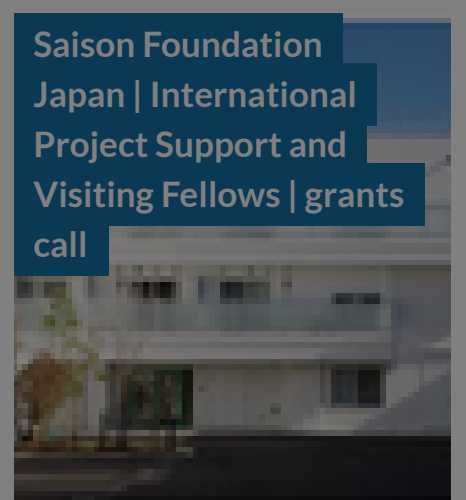
POSTED ON
10 AUG 2022

An introduction to
touring into the UK



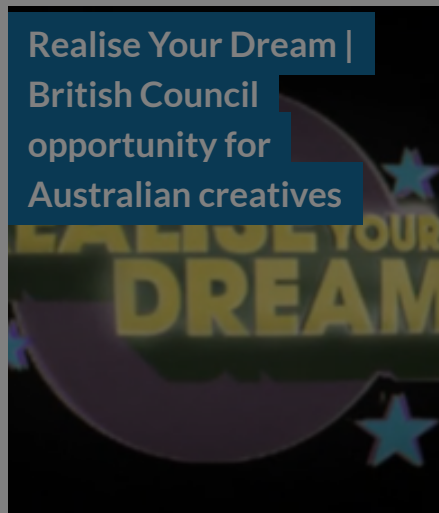
POSTED ON
07 AUG 2012

Saison Foundation
Japan | International
Project Support and
Visiting Fellows | grants
call



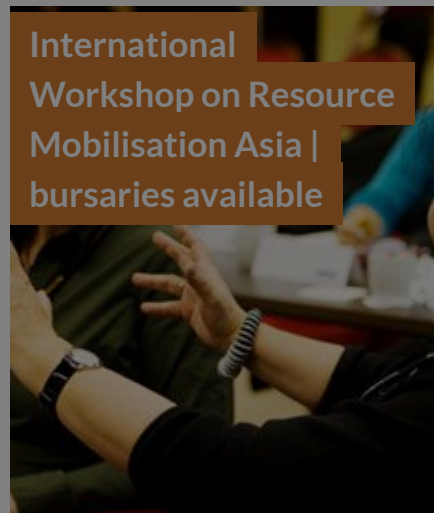
POSTED ON
30 JUN 2013

Realise Your Dream |
British Council
opportunity for
Australian creatives



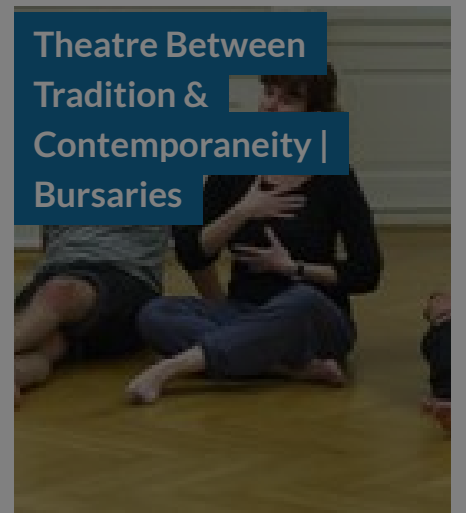
POSTED ON
28 AUG 2011

International
Workshop on Resource
Mobilisation Asia |
bursaries available



POSTED ON
25 OCT 2011

Theatre Between
Tradition &
Contemporaneity |
Bursaries



[ABOUT ASEF CULTURE360](#)

culture360.asef.org brings Asia and Europe closer by providing information, facilitating dialogue and stimulating reflection on the arts and culture of the two regions.

[MORE ABOUT ASEF CULTURE360](#) | [FAQ](#)

