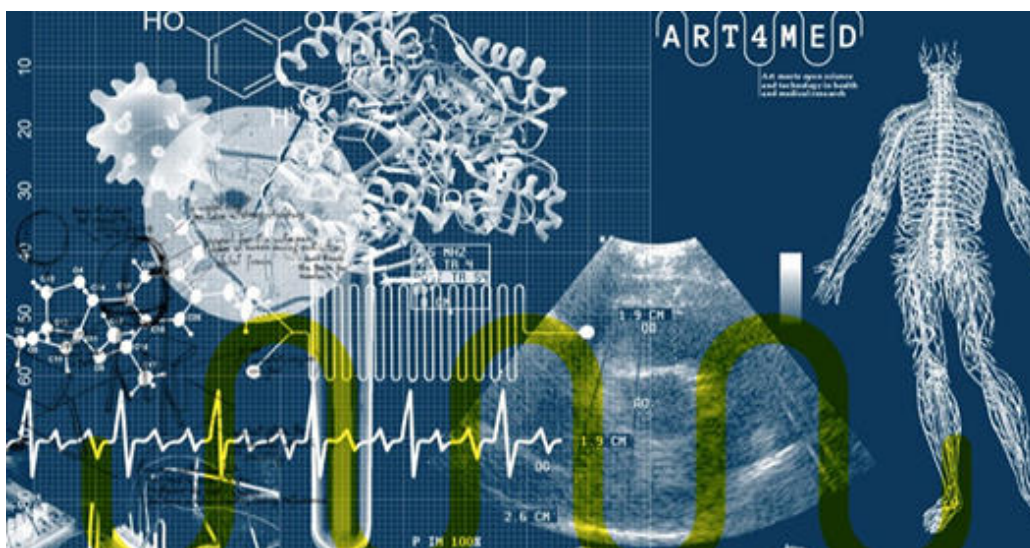


OPPORTUNITIES > ART4MED open call for art-science collaboration residencies

DEADLINE
10 JAN 2021

ART4MED open call for art-science collaboration residencies



ART4MED is an international project, led by Makery (FR) in collaboration with Waag Society (NL), Labae (DK), Bioart Society (FI) and Kersnikova Institute / Kapelica Gallery (SI), which investigates how art and design can meet open science to improve access to healthcare. Open call for research residency projects related to the theme.

The project consists of multiple yearlong artistic collaborative research residencies at each of the partner organisations, carried out in cooperation with medical or citizen science organizations. The residencies will be complemented by artists' works presentations in exhibitions or performative formats, supported by public presentations (artist talks, discussions, symposiums...) and workshops, challenging the multiple cultural and scientific issues raised by the program.

The call is addressed to **projects in the field of (self)experimentation and collaborative projects** between artists, scientists and other professionals **from the field of (open)medicine**.

Potential topics include but are not limited to the following: decolonizing technologies; biopolitics and necropolitics; human and non-human alliances; DIY/DIWO/DIT biotechnology, biochemistry, biomedicine; open culture based self-experimentation; open hardware, open wetware, experimental pharmacology; remote surgery; laboratories on chips; tissue engineering; assistive robotics; radical open health and life sciences...

Who can apply?

Adult (over 18 years old) artists, researchers, developers, hackers and members of collectives of all nationalities.

What the residency offers?

Essentials: artist fee, accommodation, return travel costs, research materials budget, access to biolab/wetlab facilities, mentoring/tutoring by expert biotechnologist(s) and support by curatorial and production team. The overall budget for the realization of the project, including artist fees and art exhibition is up to 12.000,00 EUR, with the detailed breakdown being subject to the project's needs. Infrastructure at Kersnikova Institute includes laboratories RAMPA & BioTehna, maker/haker spaces, where we enable a meeting point for artists, scientists, engineers, designers... The mentioned laboratories are complementary spaces to the Kapelica Gallery, art production platform for facilitating and showcasing contemporary investigative art productions in the field of hybrid art, within which the production and presentation of the art work will be carried out.

Commitments

In addition to the production of the artwork and the residency, the selected artist is to prepare an artistic presentation of the residential project (art installation), contribute with a workshop, a project presentation (artist talk or round table), and submit an evaluation and final report of the residency.

Schedule

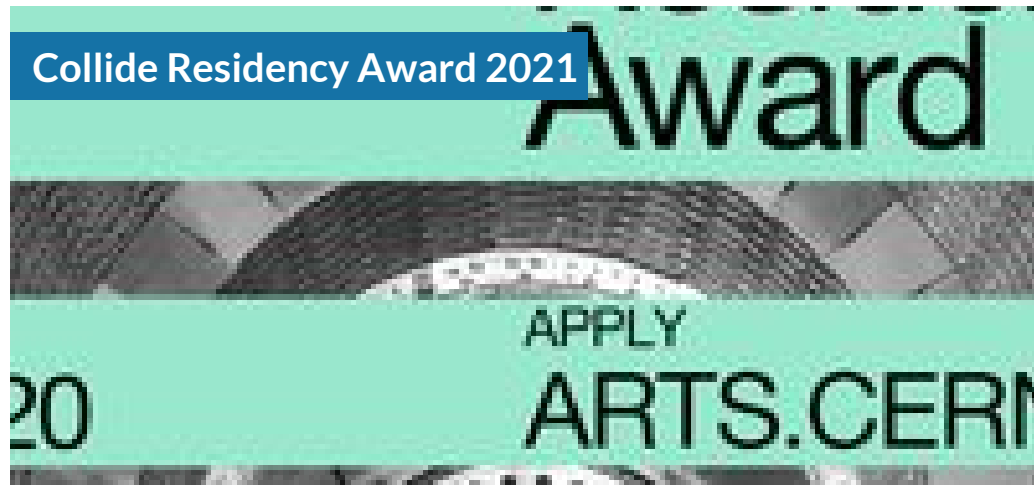
The residency program has a research phase (January–June 2021), followed by a production phase (July–December 2021), including a physical residency in Ljubljana, Slovenia with a duration ranging from 15 days to 2 months.

Submission deadline: 10 January 2021

DOWNLOAD [full call info](#)

SIMILAR CONTENT

DEADLINE
07 DEC 2020



RESIDENCIES
INTERNATIONAL SPAIN SWITZERLAND

DEADLINE
22 NOV 2021



RESIDENCIES
INTERNATIONAL SPAIN SWITZERLAND

DEADLINE

20 JUN 2016



RESIDENCIES

AUSTRIA EUROPE INTERNATIONAL NETHERLANDS

DEADLINE
30 MAY 2016



RESIDENCIES

INTERNATIONAL SWITZERLAND UNITED KINGDOM

DEADLINE
30 OCT 2015

Ars Bioarctica residency call



DEADLINE
10 MAR 2017

COLLIDE International Award | art and science proposals call



RESIDENCIES

INTERNATIONAL SWITZERLAND UNITED KINGDOM

WEBSITE

[HTTPS://KERSNIKOVA.ORG/EN/POSTS/NEWS/ALL/](https://kersnikova.org/en/posts/news/all/)

COUNTRIES

DENMARK EUROPE FINLAND FRANCE INTERNATIONAL NETHERLANDS
SLOVENIA

THEME

ARTS AND SCIENCE

DISCIPLINES

NEW MEDIA VISUAL ARTS

ABOUT ASEF CULTURE360

culture360.asef.org brings Asia and Europe closer by providing information, facilitating dialogue and stimulating reflection on the arts and culture of the two regions.

This website was created and maintained with the financial support of the European Union. Its contents are the sole responsibility of the Asia-Europe Foundation (ASEF) and do not necessarily reflect the views of the European Union.



[About us](#)

[Team](#)

[Partners](#)

[FAQ](#)

[Brand guidelines](#)

[How to partner with us](#)

[Contact us](#)

[#ASEFCulture](#)