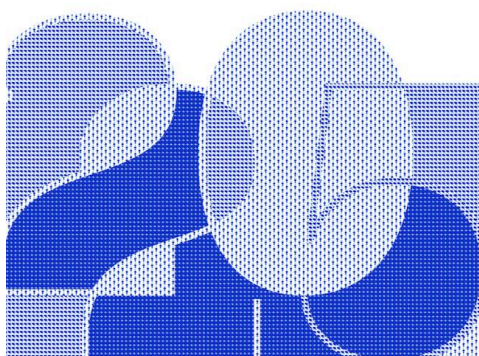


OPPORTUNITIES > 2025 Cheongju International Craft Competition

DEADLINE
02 MAY 2025

2025 Cheongju International Craft Competition



2025 청주국제공예공모전

접수기간 Application Period

2025. 3. 24.(MON) - 5. 2.(FRI)

Cheongju
International Craft
Competition

Cheongju International Craft Competition, Korea, is calling for submissions of craft artworks reflecting trends in contemporary arts and crafts and conveying values of the future from artists from all over the world.

Eligibility

- Any individual aged 18 or older or a team of such individuals are welcome to participate (no nationality restrictions apply).
- Work of any craft genre (no restrictions on subjects, mediums, or techniques)
- One work that does not exceed the size limit of 150 cm (w.) x 150 cm (l.) x 150 cm (h.)
- Works from a series may be submitted as long as they fit the size limit.
- Submitted pieces must have been created within the three years prior to the submission date (i.e., between 2023 and 2025).

Prizes

- Grand Prize: 60,000,000 KRW
- Gold Prize: 20,000,000 KRW
- Silver Prize: 10,000,000 KRW
- Bronze Prize: 6,000,000 KRW

Winners residing overseas will be provided with round-trip airfare and accommodation to attend the award ceremony (to be held during biennale opening). Winners residing in **Korea will be provided with transportation expenses and accommodation.**

All winners will exhibit their works, which will be included in the exhibition catalogue, during the 2025 Biennale. From Grand Prize to Bronze Prize, the prize money from includes the cost of acquiring the artwork, to make up Biennale Collection.

2025 Cheongju International Craft Competition application guidelines

Deadline: 2 May 2025

WEBSITE

[HTTPS://WWW.CCBCOMPETITION.COM](https://www.ccbcompetition.com)

COUNTRIES

INTERNATIONAL KOREA

DISCIPLINES

CRAFT FESTIVALS

ABOUT ASEF CULTURE360

culture360.asef.org brings Asia and Europe closer by providing information, facilitating dialogue and stimulating reflection on the arts and culture of the two regions.

MORE ABOUT ASEF CULTURE360 | [FAQ](#) | [f](#) [X](#) [@](#)

This website was created and maintained with the financial support of the European Union. Its contents are the sole responsibility of the Asia-Europe Foundation (ASEF) and do not necessarily reflect the views of the European Union.



Team

Partners

FAQ

Brand guidelines

How to partner with us

Contact us

#ASEFCulture