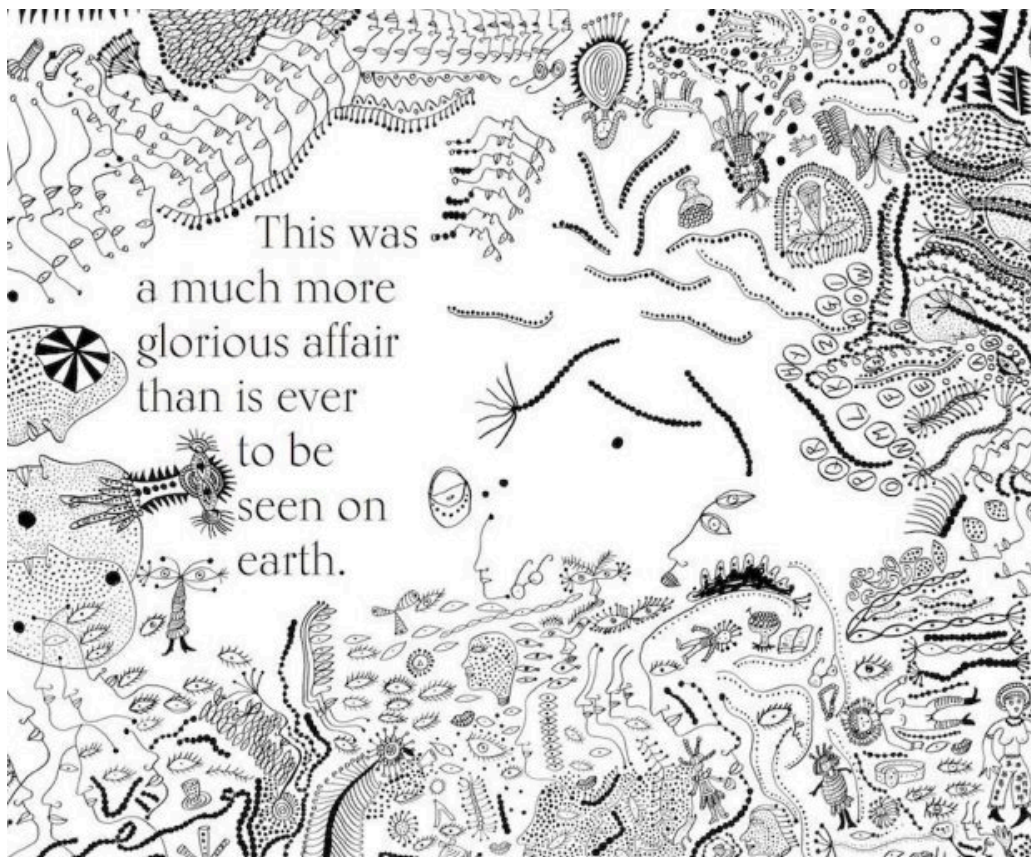


NEWS & EVENTS > Yayoi Kusama illustrates Hans Christian Andersen's
The Little Mermaid

POSTED ON
24 AUG 2016

Yayoi Kusama illustrates Hans Christian Andersen's The Little Mermaid



 TheLittleMermaid

Yayoi Kusama has illustrated a contemporary version of Hans Christian Andersen's *The Little Mermaid* for the Louisiana Museum of Modern Art

in Copenhagen.

The collaboration follows an astonishing retrospective of the contemporary Japanese artist's work at the Danish museum, which finished earlier this year.

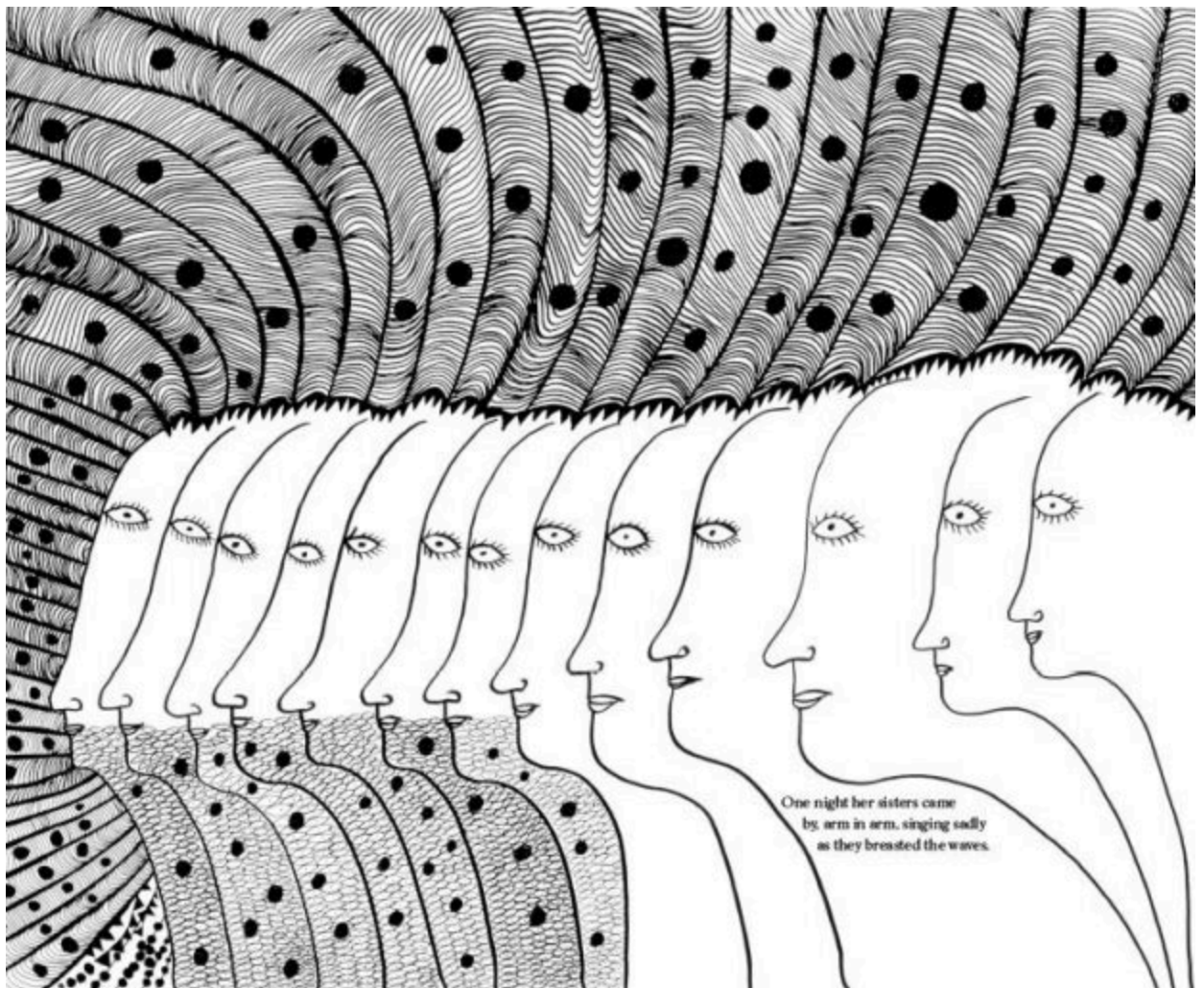
Hans Christian Andersen
&
Yayoi Kusama

The Little Mermaid



Yayoi Kusama
2015

Designed by Louisiana Museum's chief of design, Marie d'Origny Lübecker, the edition considers the original intentions and darker meanings of the text, and the changes in the Danish language. The book uses delicate paper chosen to reflect both Yayoi Kusama and Hans Christian Andersen collaboratively.



Rarely straying away from her favoured medium of dots, this is an opportunity to see Yayoi's illustrative work if you were unable to make it to the exhibition, including work from her series *Love Forever* and even some remarkable one-off commissioned work for this project.

You can view a series of fabulous pages from the book at [ItsNiceThat](#)

Images: Yayoi Kusama & Hans Christian Andersen: The Little Mermaid

SIMILAR CONTENT

POSTED ON
15 NOV 2016

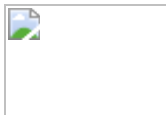


NEWS

DENMARK INTERNATIONAL JAPAN

POSTED ON
02 MAY 2011

The International Odense Film Festival



FROM - TO
01 AUG 2015 - 31 AUG 2015



EVENTS

ASIA INTERNATIONAL MAI AYSIA
FROM - TO
01 FEB 2014 - 28 FEB 2014



EVENTS

DENMARK INTERNATIONAL

POSTED ON
18 JUN 2015

Garage Museum opens in Moscow's Gorky Park

POSTED ON
27 AUG 2013

Henie Onstad Art Center

ORGANISATIONS DIRECTORY
NORWAY

COUNTRIES

DENMARK JAPAN

THEME

CREATIVE INDUSTRIES

DISCIPLINES

DESIGN LITERATURE VISUAL ARTS

ABOUT ASEF CULTURE360

culture360.asef.org brings Asia and Europe closer by providing information, facilitating dialogue and stimulating reflection on the arts and culture of the two regions.

MORE ABOUT ASEF CULTURE360 | [FAQ](#) | [f](#) [X](#) [@](#)

This website was created and maintained with the financial support of the European Union. Its contents are the sole responsibility of the Asia-Europe Foundation (ASEF) and do not necessarily reflect the views of the European Union.



About us
Team
Partners
FAQ
Brand guidelines
How to partner with us
Contact us
#ASEFCulture