
NEWS & EVENTS > Tokyo | Awakenings: Art in Society in Asia 1960s-1990s exhibition

FROM - TO
10 OCT 2018 - 24 DEC 2018

Tokyo | Awakenings: Art in Society
in Asia 1960s-1990s exhibition



Awakenings: Art in Society in Asia 1960s - 1990s. As the culmination of a 5-year joint project by three national museums in Japan, Korea and Singapore, and the Japan Foundation Asia Center, the exhibition opens at the National Museum of Modern Art in Tokyo (MOMAT) from October 10 - December 24, 2018. The exhibition then travels to Korea and Singapore in 2018 and 2019.

This is the first exhibition focusing on the period from the 1960s to the 1990s, the transitional period from modern art to contemporary art in the broad area including East Asia, Southeast Asia and South Asia.

140 works by more than ninety artists and groups are brought together in Tokyo from more than ten areas including Japan, China, Hong Kong, South Korea, Taiwan, Indonesia, Malaysia, the Philippines, Singapore, Thailand, and India. The show introduces, all at once, diverse avant-garde art including paintings, sculptures, prints, photographs, videos, performances and installations.

The years saw major events in Asian societies because of independence from colonial rule, rapid modernization, the ideological confrontation during the Cold War, the Vietnam War, racial conflicts, and the surge of the pro-democracy movements. This exhibition presents provocative, experimental works produced in the period by artists who asked what was “art” in the local realities surrounding them, and explored innovative ways of artistic expression beyond existing genres.

The objective of this exhibition is to discover unexpected resonances by transcending national frameworks and comparing arts in different times and places. In recent years, the rapid increase of Asian tourists to Japan is bringing cultural exchange between Japan and other Asian countries to a new level. Under the circumstances, experiences gained at this exhibition will change the way we view art and the world, and offer hints on building new relationships with other Asian nations.

For further information download [exhibition flyer](#)

Image: © Vasan Sittiket, Top Boot on My Head, 1993, Collection of the Artist, Photograph by Manit Sriwanichpoom

SIMILAR CONTENT

BY **JORDI BALTÀ PORTOLÉS**

14 JUN 2019 - 15 SEP 2019

Exhibition: "Awakenings: Art in Society in Asia
1960s-1990s"



FROM - TO
17 DEC 2015 - 02 FEB 2016

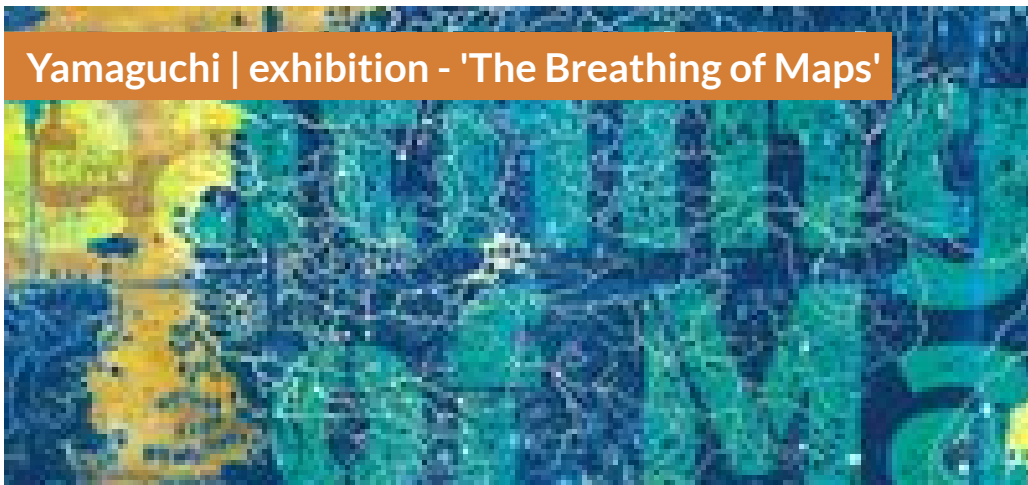
Fukuoka | Korean and Japanese artists exhibitions



EVENTS
JAPAN KOREA

FROM - TO
15 DEC 2018 - 03 MAR 2019

Yamaguchi | exhibition - 'The Breathing of Maps'



EVENTS
ASIA INDONESIA JAPAN MALAYSIA PHILIPPINES SINGAPORE

DEADLINE
16 JUL 2017

London | Brooks International Fellowship Programme 2018



OPEN CALLS
ASIA INTERNATIONAL UNITED KINGDOM

POSTED ON
17 OCT 2016

Polish culture in Asia in autumn 2016



NEWS
ASIA CHINA INDIA JAPAN KOREA POLAND

FROM - TO
28 SEP 2018 - 03 OCT 2018

ASIA FOCUS at MMCA in Seoul

EVENTS WEBSITE

ASIA CHINA JAPAN KOREA SINGAPORE
[HTTP://WWW.MOMAT.GO.JP/ENGLISH/AM/EXHIBITION/AWAKENINGS/](http://www.momat.go.jp/english/am/exhibition/awakenings/)

COUNTRIES

ASIA JAPAN KOREA SINGAPORE

THEME

MUSEUMS

DISCIPLINE

VISUAL ARTS

ABOUT ASEF CULTURE360

culture360.asef.org brings Asia and Europe closer by providing information, facilitating dialogue and stimulating reflection on the arts and culture of the two regions.

MORE ABOUT ASEF CULTURE360 | [FAQ](#) | [f](#) [X](#) [@](#)

This website was created and maintained with the financial support of the European Union. Its contents are the sole responsibility of the Asia-Europe Foundation (ASEF) and do not necessarily reflect the views of the European Union.



About us

Team

Partners

FAQ

Brand guidelines

How to partner with us

Contact us
#ASEFCulture

ASIA-EUROPE FOUNDATION (ASEF) 2017 | [TERMS OF SERVICE & PRIVACY POLICY](#) | [CREATIVE COMMONS ATTRIBUTION - NON COMMERCIAL SHARE](#)