

[NEWS & EVENTS](#) > Sensory Spaces | contemporary art from Beijing in Rotterdam

FROM - TO  
**14 JUN 2014 - 28 SEP 2014**

WEBSITE

[HTTP://WWW.BOIJMANS.NL/EN/7...](http://www.boijmans.nl/en/7...)

COUNTRIES

[CHINA](#) [NETHERLANDS](#)

THEME

[MUSEUMS](#)

DISCIPLINE

[VISUAL ARTS](#)

## Sensory Spaces | contemporary art from Beijing in Rotterdam



Sensory Spaces is a series of commissioned solo projects presented

in the Willem van der Vorm Gallery at the Museum Boijmans Van Beuningen, Rotterdam. Liu Wei was asked to make a site specific installation in the gallery; it deals with China's rapid modernization and urban growth. Exhibition runs till September 28 2014 Museum Boijmans Van Beuningen asked Liu Wei (Beijing, 1972) to make a site-specific for the forth edition of Sensory Spaces. Liu Wei's work deals with China's rapid modernization and urban growth. Literally using the materials a city is made of, he takes the power structures and dynamism of urban society as his subject. His two- and three-dimensional works consist chiefly of assemblages of materials and objects from everyday reality. He physically deconstructs our reality to expose the underlying urban dynamic. [SS\\_4selectie\\_website\\_3](#) For the installation in the museum the artist has placed enlarged construction elements, which are both

building blocks and sculptures, in the exhibition space. Collectively they form a larger-than-life do-it-yourself kit, like an urban landscape through which visitors can walk. The installation alludes to construction and decay, to possibilities and utopias. For more information download the [Liu Wei Sensory Spaces brochure](#)

## Similar content

POSTED ON  
21 APR 2014

China's largest private museum opens in Shanghai



POSTED ON  
26 MAR 2012

Moscow | Liu Bolin exhibition



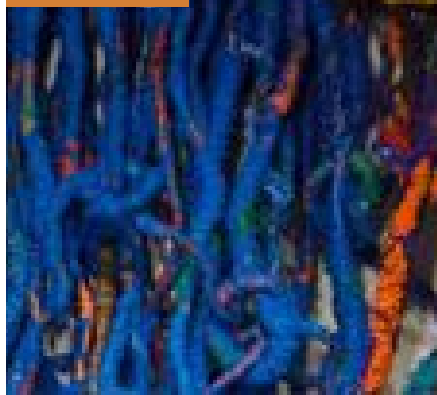
POSTED ON  
11 JUN 2016

Chinese Whispers exhibition in Bern and Vienna



POSTED ON  
04 OCT 2016

Hangzhou Triennial of Fiber Art



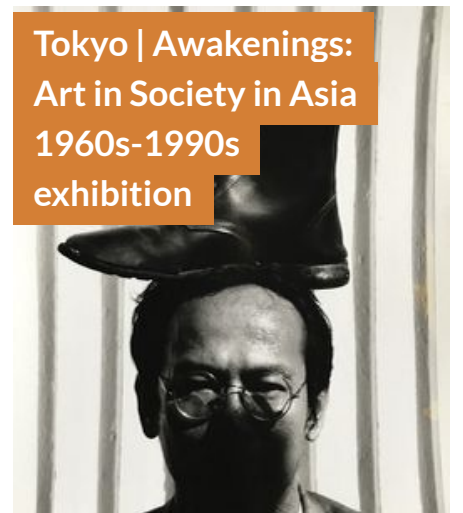
POSTED ON  
03 APR 2014

China's booming museums sector | uncertain times ahead?



POSTED ON  
01 OCT 2018

Tokyo | Awakenings: Art in Society in Asia 1960s-1990s exhibition



### **ABOUT ASEF CULTURE360**

[culture360.asef.org](http://culture360.asef.org) brings Asia and Europe closer by providing information, facilitating dialogue and stimulating reflection on the arts and culture of the two regions.

[MORE ABOUT ASEF CULTURE360 | FAQ](#)



[Browse our Network of museums in Asia and Europe](#)