

Privacy Settings

We use cookies to optimize our website and our service.

- ☒ Functional
- ☒ Statistics
- ☒ Marketing

Save

Functional only

Accept all

WEBSITE
[HTTPS://WWW.SELVEDGE.ORG/COLL...](https://www.selvedge.org/collections)

COUNTRIES
[ASIA](#) [EUROPE](#)

THEMES
[COVID-19](#) [CREATIVE INDUSTRIES](#)
[CULTURAL RIGHTS](#)
[CULTURE AND DEVELOPMENT](#)
[ECONOMY AND SOCIETY](#)
[PROFESSIONAL DEVELOPMENT](#)

DISCIPLINE
[CRAFT](#)

Celebrating textiles & crafts



SELVEDGE WORLD FAIR: CELEBRATION OF CLOTH, CULTURE & CREATIVITY

The Selvedge World Fair is a 3-day virtual event, a celebration of **cloth, culture and creativity**, that will present the work of master artisans, bringing together varied - and in some cases endangered - **textile traditions** from around the world. Visitors will be able to buy handmade treasures, take part in online workshops and watch and participate in talks on textile-related themes. Expect indigo dyers from Japan, baskets makers from Swaziland, and rug weavers from Uzbekistan and many more.

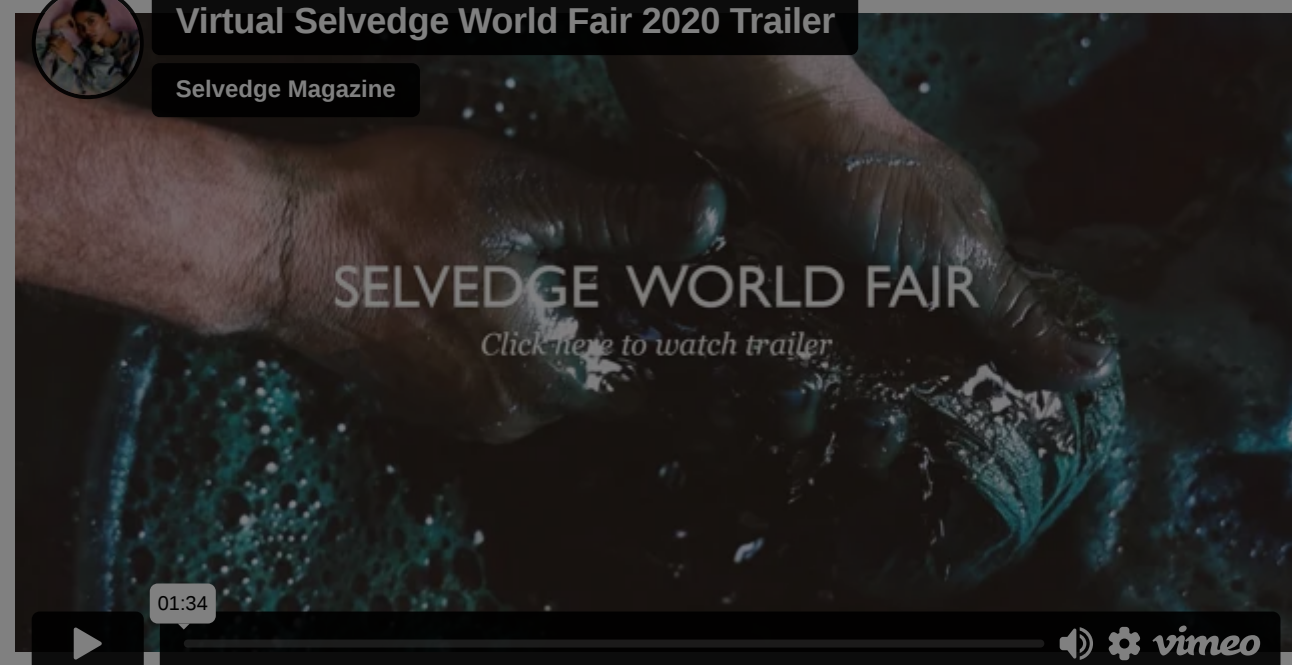
Tickets give you access to Selvedge World Fair Friday 4th & Saturday 5th September including **talks, show & tell sessions, shopping, demonstrations, articles and interviews as well as a quiz with prizes.**

For more details: <https://www.selvedge.org/collections/world-fair>



Virtual Selvedge World Fair 2020 Trailer

Selvedge Magazine



Similar content

POSTED ON
12 JUL 2017

Sweden | European
Textile Network
conference



POSTED ON
21 NOV 2012

TEDx Ubud



POSTED ON
22 MAR 2017

IKAT / eCUT
programme

2017

IKAT eCUT

TEXTILES BETWEEN ART, DESIGN,
TRADITION & TECHNOLOGY

POSTED ON
17 MAY 2021

Slovenia | BIEN 2021 -
international textile art
biennial




POSTED ON
20 OCT 2023

culture360 Media
Partnership | Art
Jakarta



POSTED ON
26 MAY 2023

Slovenia | Textile Art
Biennial BIEN 2023



ABOUT ASEF CULTURE360

culture360.asef.org brings Asia and Europe closer by providing information, facilitating dialogue and stimulating reflection on the arts and culture of the two regions.

[MORE ABOUT ASEF CULTURE360](#) | [FAQ](#)

