

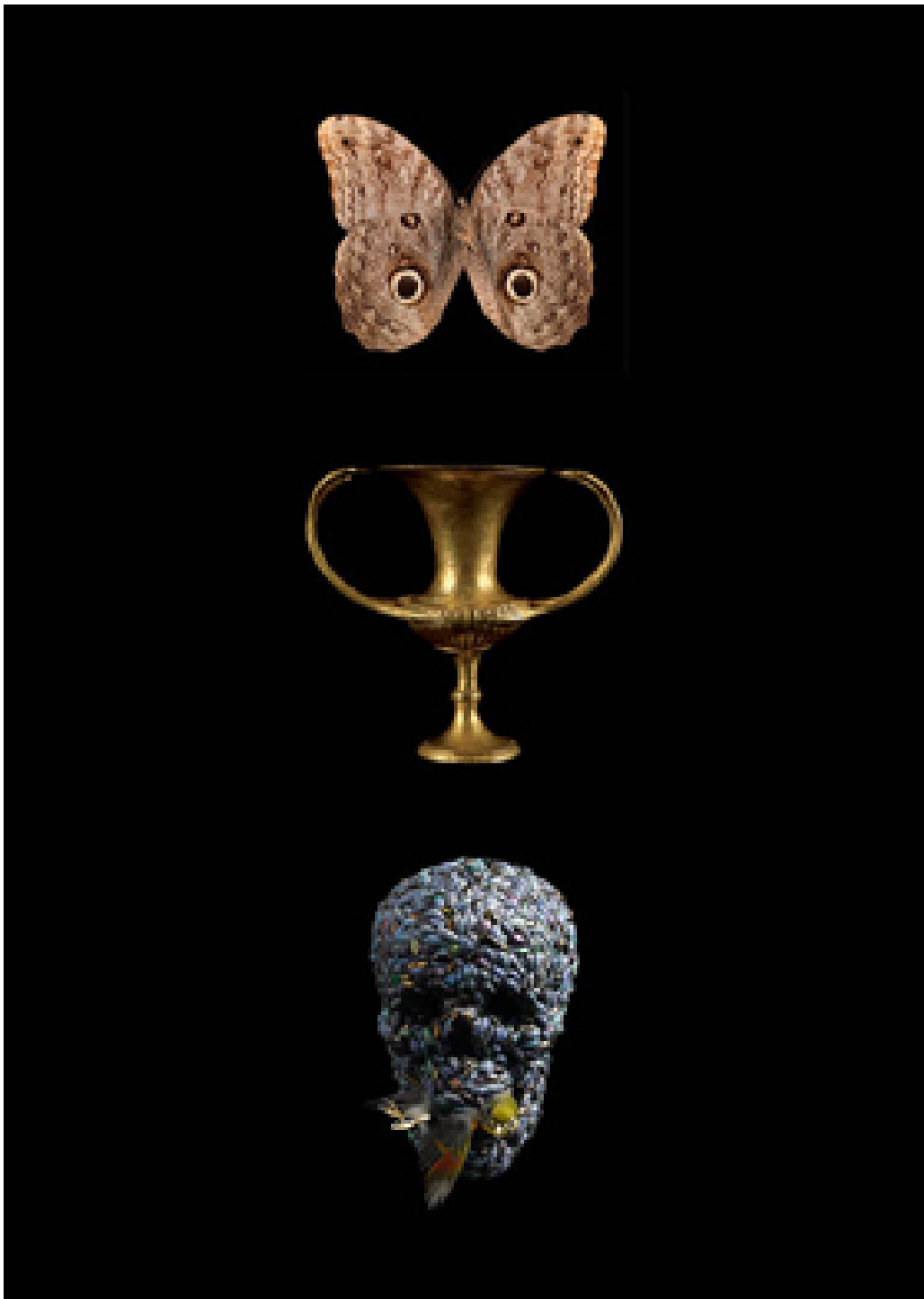



NEWS & EVENTS > Paris | Théâtre du Monde | exhibition

FROM - TO

19 OCT 2013 - 12 JAN 2014

Paris | Théâtre du Monde | exhibition



artoff1048 La maison rouge in Paris presents the exhibition, *Théâtre du Monde*, with works from the collection of the Australian David Walsh, founder of the Museum of Old and New Art (MONA) in Tasmania. It is a collaborative exhibition between the Museum of Old and New Art and the Tasmanian Museum and Art Gallery Jean-Hubert Martin, curator of the exhibition, has taken pieces from David Walsh's own collection, as well as that of the Tasmanian Museum and Art Gallery (TMAG), to show together apparently heterogeneous objects and question museal conventions. Titled *Theatre of the World* in reference to Renaissance philosopher Giulio Camillo's Theatre of Memory, the exhibition transforms

the viewer's eye into an instrument for actively investigating and understanding the world. Through universal themes, the exhibition strikes relations of form or meaning, both corresponding and contrasting, between non-Western works (an outstanding collection of Pacific barkcloths), natural history items, antiquities, ancient art and works by contemporary artists including Berlinde de Bruyckere, Jake & Dinos Chapman, Wim Delvoye, Emily Kngwarreye, Damien Hirst, Zilvinas Kempinas, Juul Kraijer, Sydney Nolan, Claude Rutault, Markus Schinwald, Jason Shulman, Felice Varini, Sandra Vásquez de la Horra and Ah Xian. The exhibition runs at la maison rouge in Paris until 12 January 2014. [Read press release](#) with conversation between David Walsh and Jean-Hubert Martin.

SIMILAR CONTENT

POSTED ON
26 AUG 2016



Museum professionals back new contemporary art sales platform

NEWS
INTERNATIONAL

FROM - TO
16 DEC 2012 - 15 MAR 2013

Shanghai | Pompidou Centre's 'Electric Fields' exhibition



BY JORDI BALTÀ PORTOLÉS
02 MAY 2015

Corfu Museum of Asian Art Opens New Japanese Galleries | Greece



FROM - TO
24 OCT 2012 - 01 JUN 2013

Barcelona | Chiharu Shiota exhibition



EVENTS

GERMANY JAPAN SPAIN

FROM - TO
13 SEP 2013 - 12 JAN 2014

Festival d'Automne à Paris | Paris Autumn Festival



EVENTS
CAMBODIA FRANCE INTERNATIONAL JAPAN

FROM - TO
21 FEB 2014 - 27 APR 2014

Nîmes | Chorégraphies suspendues | exhibition from Viet Nam



EVENTS
FRANCE VIET NAM

WEBSITE
[HTTP://WWW.LAMAISONROUGE.ORG/SPIP.PHP?LANG=EN](http://www.lamaisonrouge.org/spip.php?lang=en)

COUNTRIES
AUSTRALIA FRANCE

THEMES

ABOUT ASEF CULTURE360

culture360.asef.org brings Asia and Europe closer by providing information, facilitating dialogue and stimulating reflection on the arts and culture of the two regions.

MORE ABOUT ASEF CULTURE360 | FAQ |   

This website was created and maintained with the financial support of the European Union. Its contents are the sole responsibility of the Asia-Europe Foundation (ASEF) and do not necessarily reflect the views of the European Union.



About us
Team
Partners
FAQ
Brand guidelines
How to partner with us
Contact us
#ASEFCulture