

[NEWS & EVENTS](#) > New Asia Pacific Network for Cultural Education and Research | Singapore

POSTED ON
17 OCT 2011

COUNTRY
[SINGAPORE](#)

THEME
[CULTURAL MANAGEMENT](#)

New Asia Pacific Network for Cultural Education and Research | Singapore



The [Lasalle College of the Arts in Singapore](#) announced at the [ENCATC Annual Conference 2011](#) (European Network of Cultural Administration Training Centres) the set-up of the Asia Pacific's first Network for Cultural Education and Research (ANCER).

Mr Venka Purushothaman, Provost of Lasalle College of the Arts said, "This is a very exciting initiative for us at Lasalle. The tertiary arts institutions in Singapore play important roles in talent and capability development, as well as public education through the presenting of arts events to local and regional communities. This Network initiative is going a step further; it will fill gaps in terms of research and teaching for the creative industries within the Asia Pacific region."

Since the 1990s, the Singapore government has declared its ambition to make Singapore a new Asian creativity and innovation hub. The production of research and new knowledge through this network will, in the long term, contribute to the reservoir of arts knowledge in the Asia Pacific region, without losing the global perspective.

The Singapore government's commitment was recently reinforced by the convening of a special committee, the Arts & Culture Strategic Review committee, which has been given the task of mapping the future direction of Singapore's arts and culture development for the next 10 to 15 years.

Further institutional enquiries on ANCER may be directed to Ms Chew Suyin at suyin.chew@lasalle.edu.sg.

Similar content

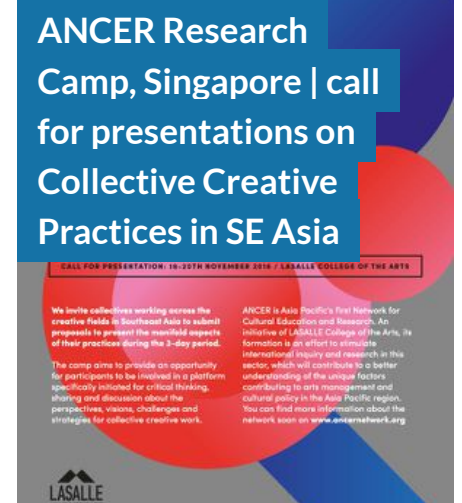
POSTED ON
07 OCT 2015



POSTED ON
01 SEP 2014



POSTED ON
23 AUG 2016



POSTED ON
20 OCT 2014



POSTED ON
07 MAY 2011



POSTED ON
10 SEP 2015



ABOUT ASEF **CULTURE360**

culture360.asef.org brings Asia and Europe closer by providing information, facilitating dialogue and stimulating reflection on the arts and culture of the two regions.

[MORE ABOUT ASEF CULTURE360 |](#)
[FAQ](#)

