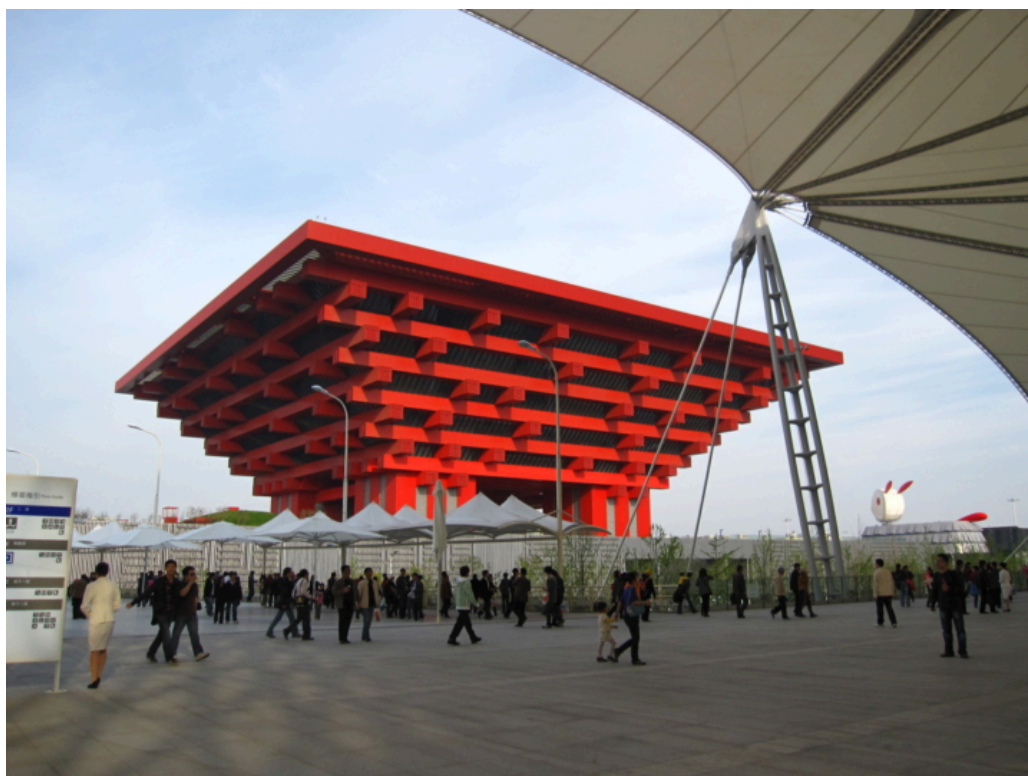


NEWS & EVENTS > Museums Worldwide Prepare to Reopen Their Doors After Lockdown

POSTED ON
11 MAY 2020

Museums Worldwide Prepare to Reopen Their Doors After Lockdown



An [article by Hyperallergic](#) explores the plans and strategies around the world as museums prepare to re-open after lockdown, implementing new safety guidelines which will become the 'new normal' for the museum experience. **NEMO Network of European Museum Organisations** has created a [map](#) that gives a quick overview of European countries' plans to re-open museums to the public.

After getting an **overview of the impact that COVID-19 has had on museums** and how they are **reacting to and coping** with the pandemic, NEMO is looking more closely at the re-opening of museums in Europe. On its **regularly updated map**, you can click on one of the countries for additional information about the current situation for museums, advice about security measures and their digital strategies.

<https://www.google.com/maps/d/u/0/viewer?mid=17-4zW7VeebnCetu54fNo-wukxY6KcrgG&ll=52.49353487977081%2C7.2045120000000225&z=4>

Article by Hyperallergic follows:

While many major museums remain shut down, other museums around the world have either reopened or announced plans to resume their activities under new safety guidelines, providing a glimpse into what the “new normal” of the museum experience might look like post-lockdown.

Late April, several museums in the state of Brandenburg in **Germany** opened their doors to the public under instructions to comply with social distancing and containment measures. According to the *Art Newspaper*, the Brandenburg Museum Association has issued guidelines for reopening which include installing plexiglass shields for ticket counters; accepting only credit cards instead of cash payments; supplying all staff with disinfectant materials; frequent cleaning of the space; and a limit of one visitor per 161-square-foot area. Tours will not be allowed and audio guides should be offered only if they can be disinfected after each use. The German Museums Association followed with recommendations to allot special time-slots for visitors from high-risk groups, extend opening hours, and provide masks on request for visitors.

Other German states announced that they will reopen museums in the short term, according to reporting by the *Frankfurter Allgemeine* newspaper. Museums in Thuringia will reopen on April 28 while others in Berlin, Saxony, and Dresden plan to gradually reopen on May 4.

Austria will begin to allow museums and other cultural institutions to reopen starting from mid-May, according to **a statement by Vice-Chancellor Werner Kogler**. However, major museums in Vienna like Kunsthistorisches Museum and the Belvedere, home to Gustav Klimt’s

“The Kiss,” have postponed their reopening date to July 1. Austria’s neighboring country, Switzerland, **has set June 8 as the date** to reopen museums and libraries.

In **Belgium**, several museums have announced scheduled reopening on May 19. These institutions include the Royal Museums of Fine Arts, which comprises six museums in Brussels, and the Museum van Hedendaagse Kunst (MHKA) in Antwerp. “We, at the MHKA, are ready to serve as a test room for that post-lock down experience,” said MHKA’s director, Bart De Baere, in a **statement**. The museums will adhere to social distancing guidelines issued by the country’s National Security Council.

Italy, the country that has the highest number of COVID-19 victims in Europe, is planning to reopen museums and libraries on May 19. Italy’s prime minister, Giuseppe Conte, made the announcement in a TV interview on Sunday, stressing that social distancing measures must be maintained in the months to come. “If we do not respect the precautions the curve will go up, the deaths will increase, and we will have irreversible damage to our economy,” he **said**. “If you love Italy, keep your distance.”

In **Hong Kong**, museums that reopened in March amid encouraging signs that the disease had been contained were **forced to close again** as a second wave of infections hit the region.

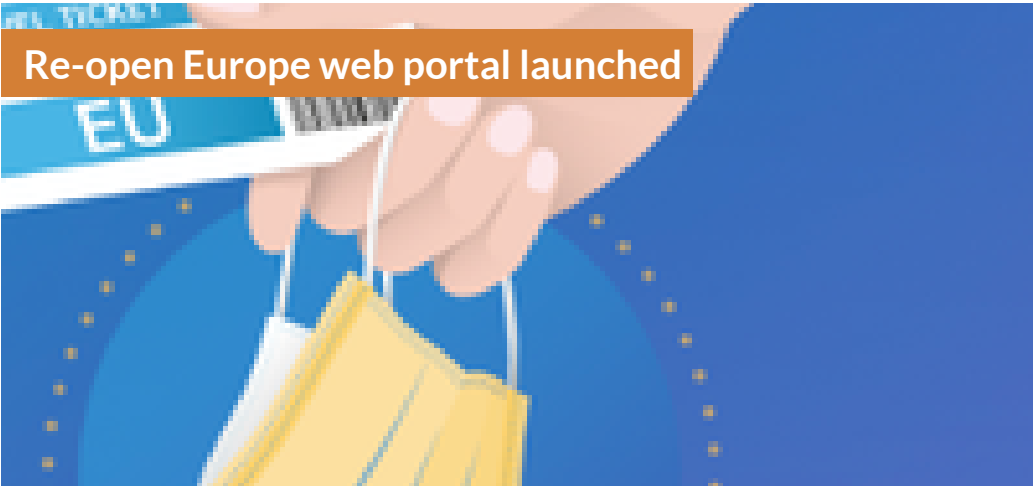
Meanwhile, **180 museums across China** have been taking bookings and allowing visitors under new restrictions since March 15. The number of visitors is limited to 2,000 people inside the Shanghai Museum and up to 5,000 at the China Art Museum. Masks are mandatory and visitors are required to book tickets in advance through a **QR code program** online. Guided tours are limited to digital and audio tours.

In **South Korea**, the National Museum of Modern and Contemporary Art in Seoul has rescinded **previous plans** to reopen on March 23. It remains closed until further notice together with other museums in the country, like the Seoul Museum of Art and the Leeum Samsung Museum of Art. South Korea is the Asian country hit hardest by the pandemic outside China.

In **Japan**, earlier plans to reopen Tokyo’s Museum of Contemporary Art and Kyoto’s Kyocera Museum of Art in mid-March or at the beginning of April have been postponed till May 6. This date remains subject to change, according to both museums.

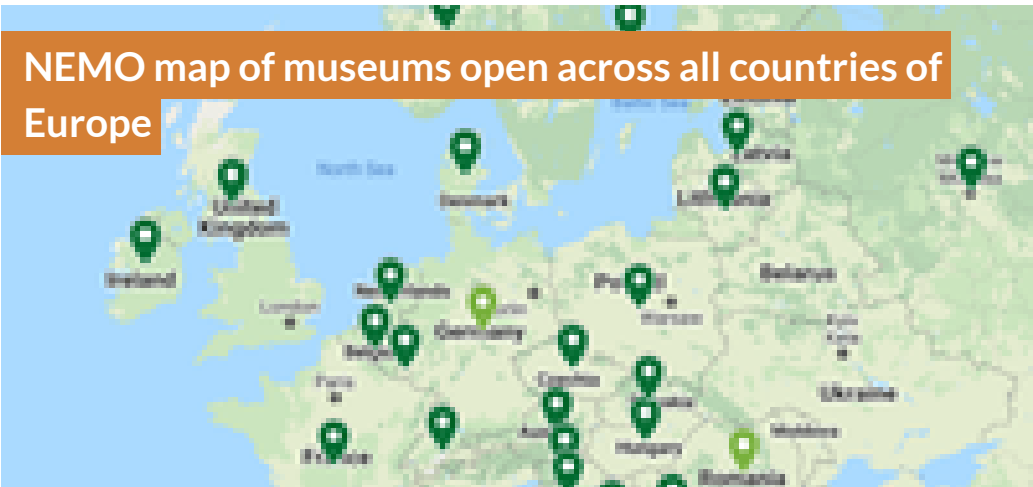
SIMILAR CONTENT

POSTED ON
17 JUN 2020



NEWS
EUROPE

POSTED ON
22 JUL 2021



NEWS
EUROPE

POSTED ON
01 MAY 2020

Vilnius to turn its Unesco-listed historic centre into a vast open-air cafe



NEWS
LITHUANIA

POSTED ON
21 JAN 2021

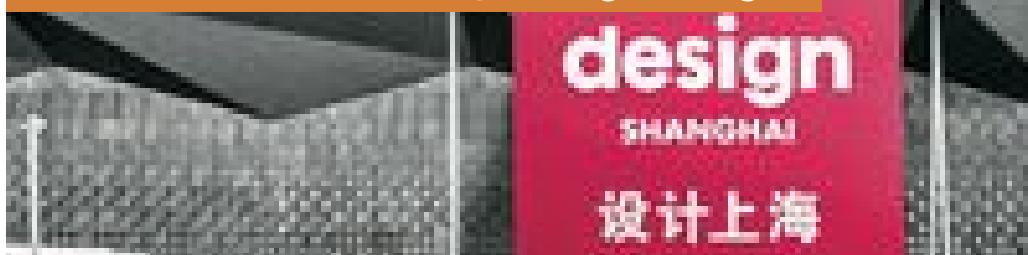
NEMO Final Report on the impact of the COVID-19 pandemic on museums in Europe



PUBLICATIONS
EUROPE

POSTED ON
29 APR 2022

COVID-19 outbreak delays Design Shanghai



POSTED ON
25 JAN 2021

Museums step up as vaccination centres



NEWS

ITALY UNITED KINGDOM

WEBSITE

[HTTPS://HYPERALLERGIC.COM/559172/MUSEUMS-COVID-19/](https://hyperallergic.com/559172/museums-covid-19/)

COUNTRIES

ASIA EUROPE

THEMES

COVID-19 CULTURAL MANAGEMENT CULTURAL POLICY MUSEUMS

ABOUT ASEF CULTURE360

culture360.asef.org brings Asia and Europe closer by providing information, facilitating dialogue and stimulating reflection on the arts and culture of the two regions.

MORE ABOUT ASEF CULTURE360 | [FAQ](#) | [f](#) [X](#) [@](#)

This website was created and maintained with the financial support of the European Union. Its contents are the sole



responsibility of the Asia-Europe Foundation (ASEF) and do not necessarily reflect the views of the European Union.

About us

Team

Partners

FAQ

Brand guidelines

How to partner with us

Contact us

#ASEFCulture

ASIA-EUROPE FOUNDATION (ASEF) 2017 | [TERMS OF SERVICE & PRIVACY POLICY](#) | [CREATIVE COMMONS ATTRIBUTION - NON COMMERCIAL SHARE](#)