

## Privacy Settings

We use cookies to optimize our website and our service.

- ☒ Functional
- ☒ Statistics
- ☒ Marketing

Save

Functional only

Accept all

Asian art after 1989



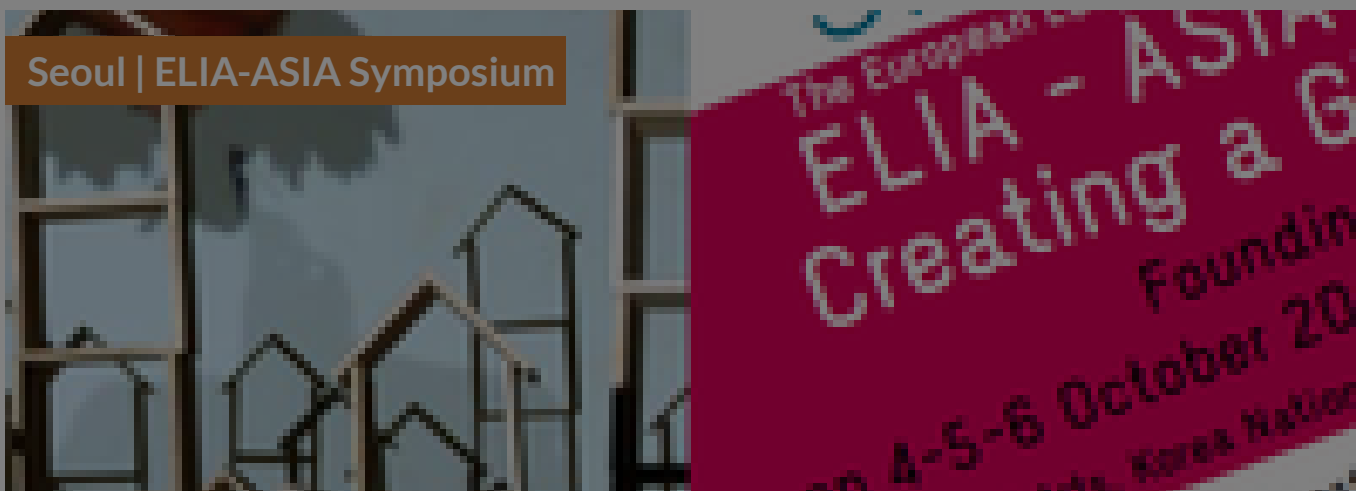
The National Museum of Modern and Contemporary Art, Seoul (MMCA, Seoul) is pleased to present *Territories Disrupted: Asian Art after 1989*, an international symposium on 4-5 April 2017 co-organized with the Tate Research Center: Asia. The symposium consists of lectures and discussions of professionals in the art field, placing the historical fall of the Berlin wall in a single line with the dynamic movements, exchange, and mutual organic influences appeared in the contemporary art of the Northeast and Southeast Asia. This event is anticipated to present interesting new perspective of the transformations in Asian art, in close contact with the social, historical incidents of each nation in the 1990's. Speakers include influential international curators and major contemporary artists, coming from the UK, Korea, Philippines, Indonesia, India, Singapore, Japan and beyond. The event capacity is now filled but registration is still open for cancellations.

---

## SIMILAR CONTENT

FROM - TO  
04 OCT 2012 - 06 OCT 2012

## Seoul | ELIA-ASIA Symposium

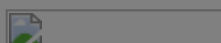


### EVENTS

ASIA EUROPE KOREA

POSTED ON  
25 FEB 2013

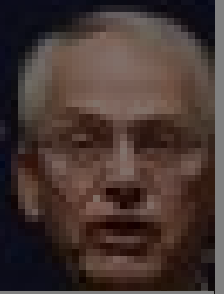
## National Museum of Korean Contemporary History: reconciliation through dialogue



POSTED ON  
27 DEC 2012

## National Museum of Korean Contemporary History offers reconciliation through dialogue

# Temporary Hist



FROM - TO  
04 OCT 2016 - 08 OCT 2016

## PAMS Performing Arts Market in Seoul 2016

# Performing Arts Market

### EVENTS

INTERNATIONAL KOREA

FROM - TO  
14 SEP 2013 - 14 SEP 2013

## Singapore symposium | Is Asia One? Towards an Asian Art History

FROM - TO  
02 SEP 2014 - 23 NOV 2014

## EVENTS

ASIA INTERNATIONAL KOREA

## WEBSITE

[HTTPS://WWW.MMCA.GO.KR/ENG/PR/NEWSDETAIL.DO?](https://www.mmca.go.kr/eng/pr/newsdetail.do?menuid=6010000000&bdcid=201703170005748&searchbmcid=200904130000001)

[MENUID=6010000000&BDCID=201703170005748&SEARCHBMCID=200904130000001](https://www.mmca.go.kr/eng/pr/newsdetail.do?menuid=6010000000&bdcid=201703170005748&searchbmcid=200904130000001)

## COUNTRIES

EVENTS  
ASIA KOREA UNITED KINGDOM  
SINGAPORE

## THEME

MUSEUMS

## DISCIPLINE

VISUAL ARTS

## ABOUT ASEF CULTURE360

[culture360.asef.org](http://culture360.asef.org) brings Asia and Europe closer by providing information, facilitating dialogue and stimulating reflection on the arts and culture of the two regions.

**MORE ABOUT ASEF CULTURE360 | [FAQ](#) | [f](#) [X](#) [@](#)**

This website was created and maintained with the financial support of the European Union. Its contents are the sole responsibility of the Asia-Europe Foundation (ASEF) and do not necessarily reflect the views of the European Union.



About us  
Team  
Partners  
FAQ  
Brand guidelines  
How to partner with us

Contact us  
#ASEFCulture

ASIA-EUROPE FOUNDATION (ASEF) 2017 | [TERMS OF SERVICE & PRIVACY POLICY](#) | [CREATIVE COMMONS  
ATTRIBUTION - NON COMMERCIAL SHARE](#)