



NEWS & EVENTS > Mind your Artspeak | guidance for artists, curators, museums

POSTED ON
31 MAY 2013

Mind your Artspeak | guidance for
artists, curators, museums

specific locality
perfectionist suggestibility
recapitulated
kinesthetic code
emphasising visuality
disciplinarity
construct
effervesced
curatorial
liminality
reconnecting abstraction
considering relational dynamics
cutting
peculiarly familiar
abstractly asks
thingness
materiality
experience transitory relations to place
indexicality
political resonances
poignant
liminal
cultural foam
signal
provocate
oeuvre
manifesto of futility
probe
objectness
feminist
leggy
plasticity
erotic
euclidian
circumnavigate
folkloric
multi
juxtapose
minimalisity
pedagogy
crafting new synergies
dialectically
ethics of representation
optical vibrancy
choreographic provocations
unsettling interpretative suppleness
devaluation
fiercely deconstructive
combine
over
renowned
transformative



The Guardian's Culture Professionals Network looks at 'artspeak' and **examples of what NOT to write about art**. How we communicate our work is important. A new website **Interpretation Matters** shows how artspeak can have a profound impact on audience experience, visitor rates, artist reputations and more.

Interpretation Matters is all about the written material found in galleries - the text panels on the walls, providing context for the work on show, and the printed booklets that describe the works or overall programme. Arts writer Dany Louise directs the project and explains the challenge:

How often have you walked into a gallery, read the written interpretation boards next to the artworks, and felt none the wiser? How often have you felt that they haven't told you what you want to know, that you've been left with more questions than answers, or that

you haven't understood a word? How frequently do you read the seemingly compulsory phrases: "questions the notion of..." or "challenges the viewers' ideas about..." without the least idea of what notions are being questioned, or why, and what supposedly wrong ideas you have that are being challenged?

Interpretation Matters provides a regular 'Good Writing' citation to highlight examples of good writing from galleries and museums. The project is UK-based but do contribute an international perspective with your examples of good and bad art writing in English.

Visual by Tagul of some of the examples submitted to The Guardian

SIMILAR CONTENT

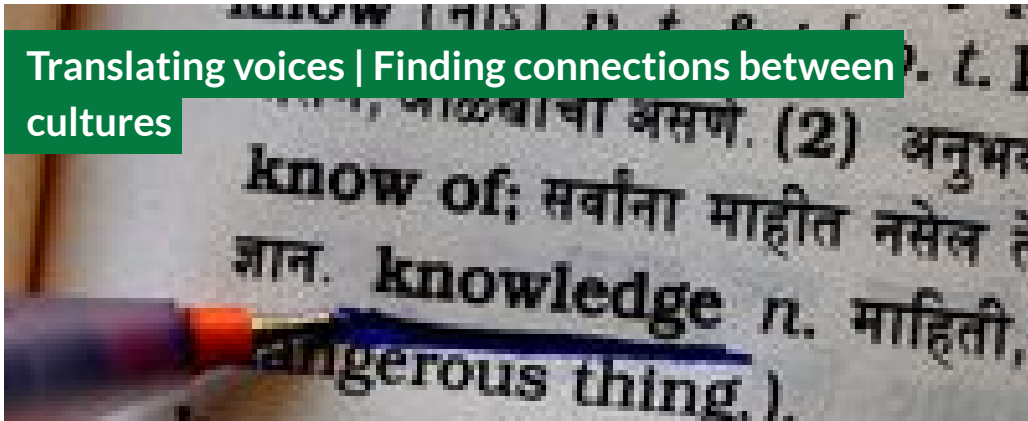
BY **NAIMA MORELLI**
18 JAN 2018



INTERVIEWS
SINGAPORE

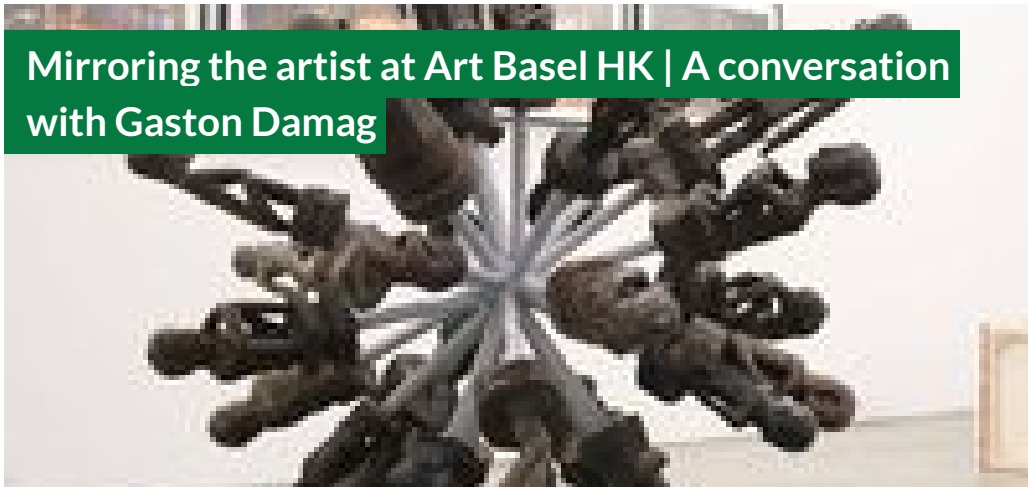
BY **CLAIRE WILSON**
27 JUL 2016

Translating voices | Finding connections between cultures



BY LAI DEL ROSARIO
20 MAY 2015

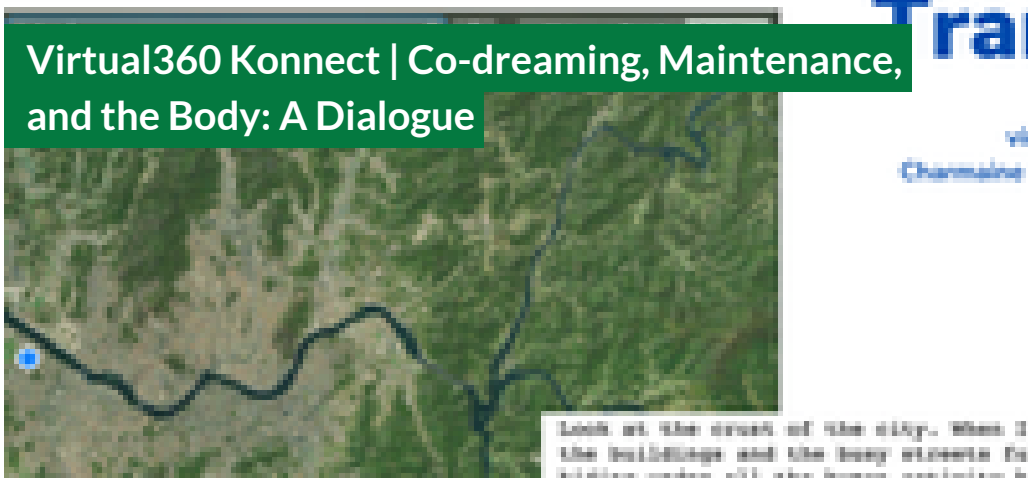
Mirroring the artist at Art Basel HK | A conversation with Gaston Damag



FEATURES
FRANCE PHILIPPINES

BY CHARMAINE POH & JUNE YUWOL CHUNG
26 FEB 2021

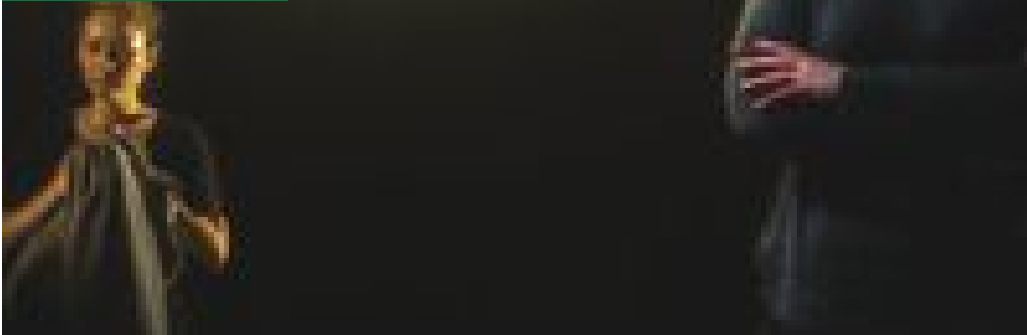
Virtual360 Konnect | Co-dreaming, Maintenance, and the Body: A Dialogue



INSIGHTS
KOREA SINGAPORE

BY VALENTINA RICCARDI
06 NOV 2017

Intercultural theatre practices | Interview with Frances Barbe

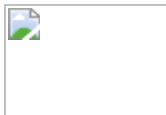


INSIGHTS

ASIA AUSTRALIA SINGAPORE

BY KERRINE GOH
25 NOV 2005

A Conversation With Alexis A. Tioseco



COUNTRY

UNITED KINGDOM

THEMES

ARTS EDUCATION CULTURAL MANAGEMENT MUSEUMS

FEATURES

DISCIPLINES

LITERATURE VISUAL ARTS

ABOUT ASEF CULTURE360

culture360.asef.org brings Asia and Europe closer by providing information, facilitating dialogue and stimulating reflection on the arts and culture of the two regions.

MORE ABOUT ASEF CULTURE360 | [FAQ](#) | [f](#) [X](#) [@](#)

This website was created and maintained with the financial support of the European Union. Its contents are the sole responsibility of the Asia-Europe Foundation (ASEF) and do not necessarily reflect the views of the European Union.



About us
Team
Partners
FAQ
Brand guidelines
How to partner with us
Contact us
#ASEFCulture