

Privacy Settings

We use cookies to optimize our website and our service.

- ☒ Functional
- ☒ Statistics
- ☒ Marketing

Save

Functional only

Accept all

WEBSITE
[HTTPS://KEANET.EU/COLLABORATI...](https://keanet.eu/collaborati...)

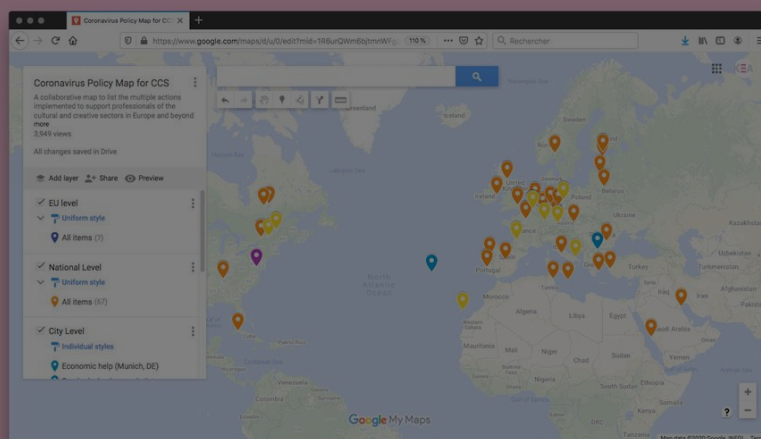
COUNTRIES
[EUROPE](#) [INTERNATIONAL](#)

THEMES
[COVID-19](#) [CREATIVE INDUSTRIES](#)
[CULTURAL POLICY](#)

laborative map - contributions welcome

Policy measures for cultural sector on collaborative map - contributions welcome

**Let's come together
to map the COVID19 policy
measures for the CCS**



KEA
EUROPEAN AFFAIRS



How to contribute?

You can share information
about policy measures filling
the **dedicated form**.

How to access the map?

The map is available
on **KEA's website**.

A collaborative map is tracking the various policy measures introduced for the cultural and creative sectors to support professionals through the covid-19 period. KEA has set up the map online and invites contributions from culture professionals worldwide.

You'll find on the map the multiple measures taken to support professionals from the cultural and creative sectors in Europe and beyond during the covid-19 period. KEA has set up a collaborative map to collect all the measures and actions by country and on the European level. Since it is a collaborative work, both the content of this post and the map will be subject to regular updates.

How to collaborate on the map?

Share measures by filling in the form <https://bit.ly/3eqVGW2>

Take a look at the map <https://bit.ly/2JhFxUp>

Similar content

POSTED ON
26 OCT 2020

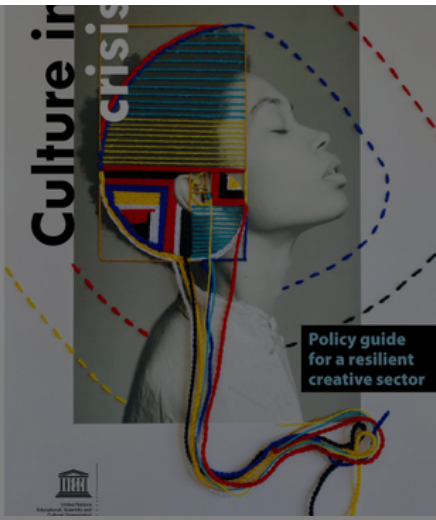
UNESCO publication |
Culture in Crisis: Policy
guide for a resilient
creative sector

POSTED ON
17 DEC 2015

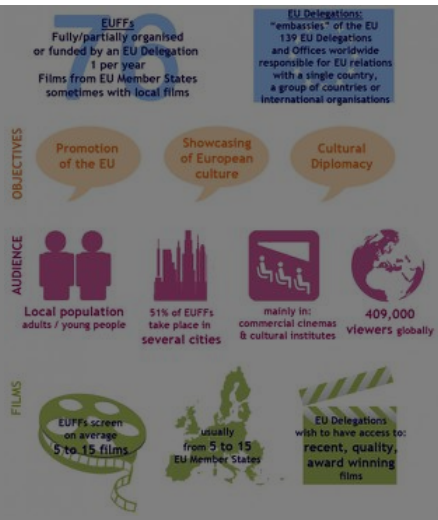
Study on EU organised
European film festivals
abroad

POSTED ON
23 FEB 2021

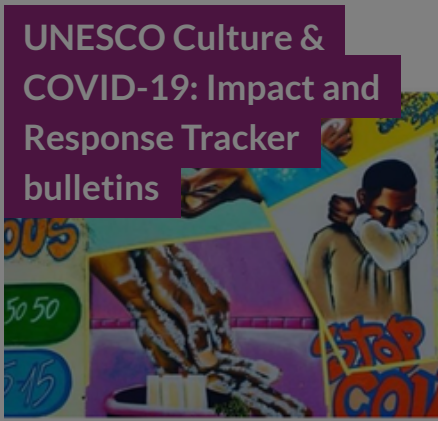
Cultural support
measures in
Luxembourg, Cyprus,
Malta | sector surveys in
Finland, Sweden



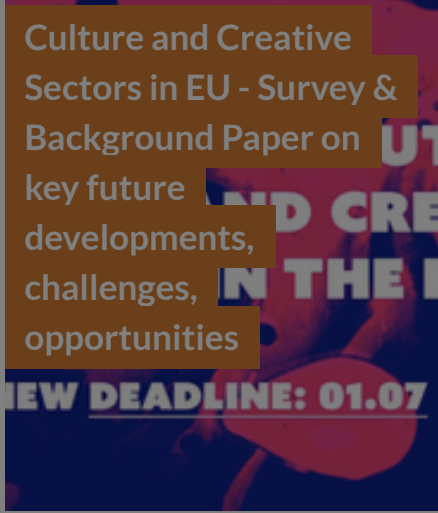
POSTED ON
03 DEC 2020



POSTED ON
11 JAN 2021



POSTED ON
27 JUN 2019



ABOUT ASEF CULTURE360

culture360.asef.org brings Asia and Europe closer by providing information, facilitating dialogue and stimulating reflection on the arts and culture of the two regions.

[MORE ABOUT ASEF CULTURE360](#) | [FAQ](#)

