

## Privacy Settings

We use cookies to optimize our website and our service.

- ☒ Functional
- ☒ Statistics
- ☒ Marketing

Save

Functional only

Accept all

COUNTRIES  
[JAPAN](#) [UNITED KINGDOM](#)

THEMES  
[CREATIVE INDUSTRIES](#)  
[CULTURAL POLICY](#)  
[ECONOMY AND SOCIETY](#)

DISCIPLINES  
[CRAFT](#) [DESIGN](#) [FILM](#) [MUSIC](#) [NEW MEDIA](#) [PERFORMING ARTS](#) [VISUAL ARTS](#)

2018

in June



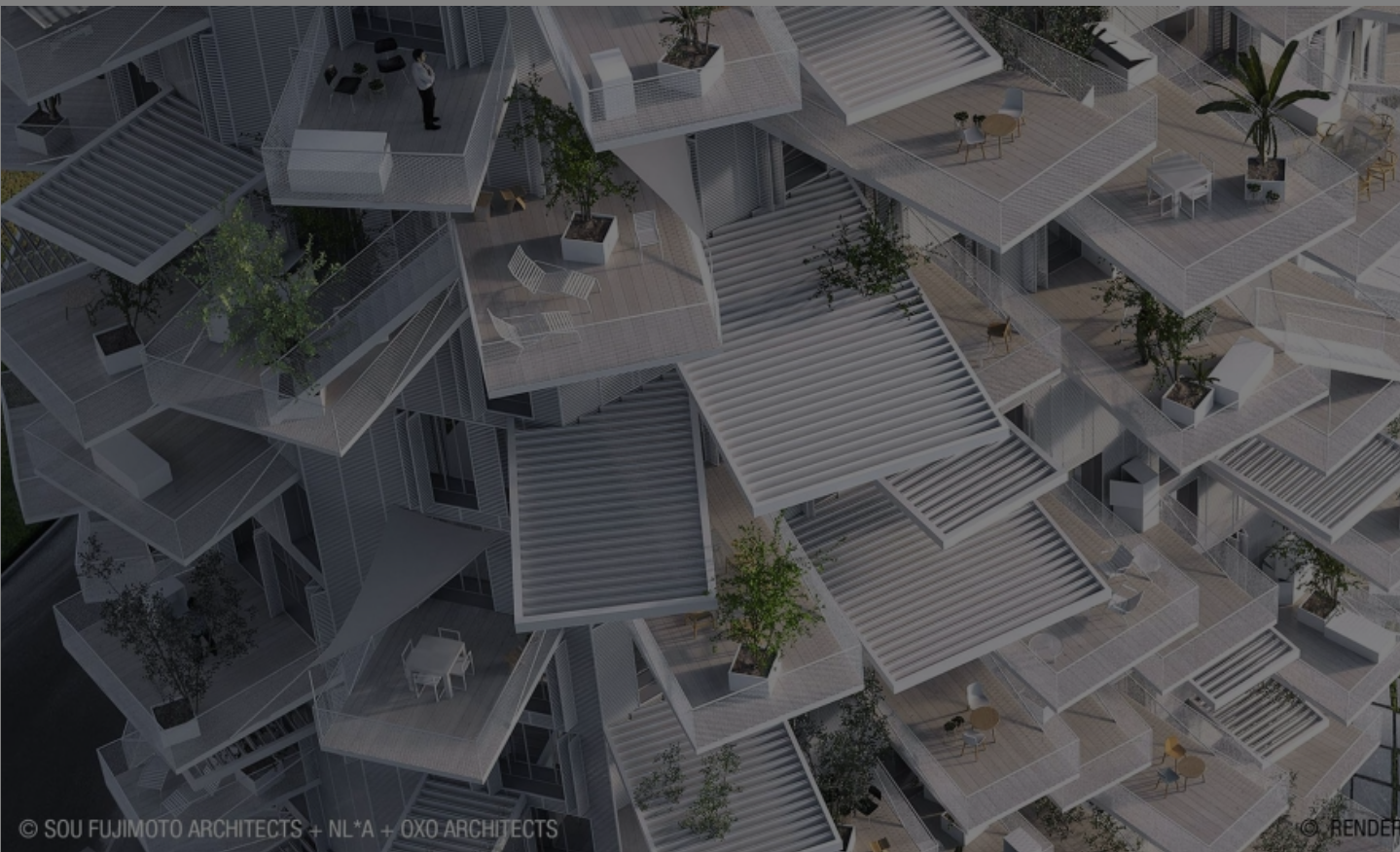
[Japan House London](#) is the new cultural home of Japan in London, opening on 22 June 2018. Presenting the very best of Japanese art, design, gastronomy, innovation, and technology, it deepens our appreciation of all that Japan has to offer. Part of a global initiative led by the Japanese Ministry of Foreign Affairs, there are two other Japan Houses in Los Angeles and São Paulo.

The varied offer includes an exhibition gallery, a theatre, a fine-dining Japanese restaurant and a retail floor of thoughtfully curated Japanese products. This is complemented by a diverse line-up of exhibitions, events, workshops, and seminars.

With a wide-ranging programme, Japan House celebrates Japan's innovative, creative and technological merits, while shining a spotlight on the artisans, craftsmen, designers, performers, musicians and other professionals who are making waves both in Japan and around the world – from internationally renowned individuals, to emerging artists who are excelling in their field.

The inaugural exhibition at Japan House London recognises the work of one of Japan's most influential contemporary architects - Sou Fujimoto:

Gallery: 22 June - 05 August 2018  
Admission Free



'**SOU FUJIMOTO: FUTURES OF THE FUTURE**', is an exhibition held in collaboration with Tokyo's TOTO GALLERY · MA. Seen for the first time in the UK, the exhibition explores the innovative works of one of Japan's most influential contemporary architects. Fujimoto's vision of the future is not a fully imagined set of assumptions but is to plant the seeds of inspiration and potential. This exhibition looks at not only current projects but also Fujimoto's architectural experiments for the future asking the visitor to share in imagining a variety of futures of the future.

Learn more about [Japan House London](#)

## Similar content

POSTED ON  
23 APR 2013

London | Sou Fujimoto  
to design 2013  
Serpentine pavilion

POSTED ON  
16 FEB 2015

Sou Fujimoto designs  
House of Hungarian  
Music for Budapest  
museum complex

POSTED ON  
25 AUG 2016

Shanghai Project |  
Envision 2116

POSTED ON  
12 JUL 2013

Singapore | World  
Architecture Festival

POSTED ON  
09 SEP 2019

Shanghai International  
Paper Art Biennale  
2019

POSTED ON  
08 JUL 2014

Daiwa Anglo-Japanese  
Foundation Art Prize

### **ABOUT ASEF CULTURE360**

[culture360.asef.org](#) brings Asia and Europe closer by providing information, facilitating dialogue and stimulating reflection on the arts and culture of the two regions.

[MORE ABOUT ASEF CULTURE360](#) | [FAQ](#)

