

[NEWS & EVENTS](#) > Invention & Intervention | Hong Kong new media art

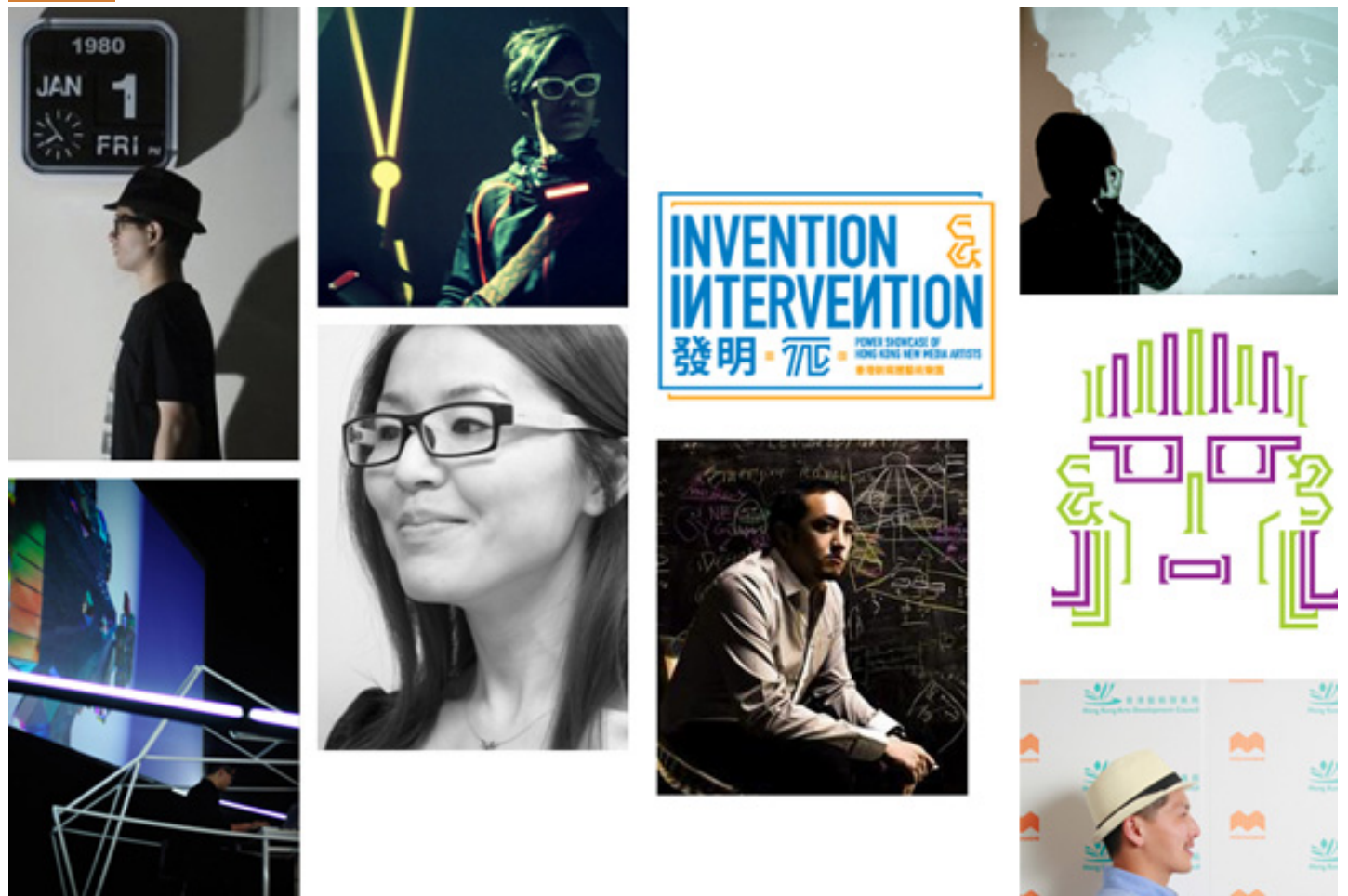
FROM - TO
21 JUL 2011 - 07 AUG 2011

WEBSITE
[HTTP://WWW.MICROWAVEFEST.NE...](http://www.microwavefest.net)

COUNTRIES
[ASIA](#) [CHINA](#)

DISCIPLINES
[FESTIVALS NEW MEDIA](#)
[PERFORMING ARTS VISUAL ARTS](#)

Invention & Intervention | Hong Kong new media art



[Invention and Intervention](#), a showcase of Hong Kong's new media art scene, is currently underway to present the latest media artworks that successfully merge technology with creativity. Supported by the [Hong Kong Arts Development Council](#), the event is organized by [Microwave](#), an independent organization that promotes pioneering media art works through festivals. Microwave was established in 1996 and quickly became a prominent platform to gather new media artists based in Hong Kong. Now in its 13th year, the organization continues to push the discipline through dialogues and exchanges between artists and members of the public. The 2011 edition of the festival includes a cross-disciplinary performance featuring renowned local artists (Chris Cheung, Keith Lam, Miu Ling Lam, Teddy Lo, and Samson Young), an artist symposium, and free guided tours to the exhibition. - Established in 1995, the Hong Kong Arts Development Council (ADC) is a statutory body set up by the government to plan, promote and support the broad development of the arts including literary arts, performing arts, visual arts as well as film and media arts in Hong Kong. *Images courtesy of Microwave*

Similar content

POSTED ON
03 NOV 2011

Microwave
International New
Media Arts Festival
2011

POSTED ON
04 JUL 2011

Videotage

POSTED ON
04 MAR 2011

Microwave
International Media Art
Festival



POSTED ON
04 MAR 2011

Ying E Chi

POSTED ON
05 JUL 2011

**Hong Kong Dance
Alliance (HKDA)**

POSTED ON
04 JUL 2011

**Hong Kong Arts
Development Council**

ABOUT ASEF CULTURE360

culture360.asef.org brings Asia and Europe closer by providing information, facilitating dialogue and stimulating reflection on the arts and culture of the two regions.

[MORE ABOUT ASEF CULTURE360 |
FAQ](#)

