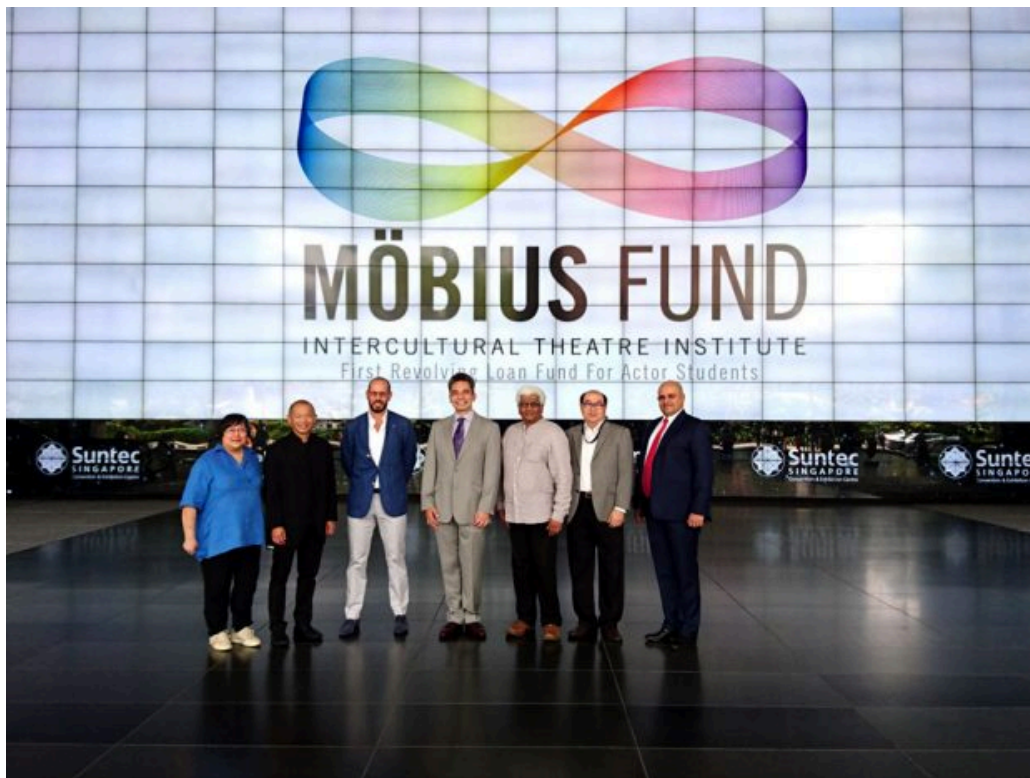


---

**NEWS & EVENTS** > Intercultural Theatre Institute Singapore launches  
Möbius Fund for actor students

POSTED ON  
31 AUG 2017

## Intercultural Theatre Institute Singapore launches Möbius Fund for actor students



The Intercultural Theatre Institute in Singapore has **launched the Möbius Fund**, a revolving loan fund for ITI students - the first revolving loan fund of its kind for actor students. The launch took place at Suntec Singapore, a media partner of ITI.

The Möbius Fund received its kickstart with four lead donors, ITI alumni and others who wish to remain anonymous. Together, they have contributed a total of S\$250,000. When matched by the Ministry of Culture, Community and Youth's (MCCY) Cultural Matching Fund (CMF), it will bring the Möbius Fund to an initial capitalisation of \$500,000.

The first such revolving loan fund for actor students, the official launch saw the lead donors of the Möbius Fund, ITI Angels, alumni, other supporters of ITI and representatives from the National Arts Council and the MCCY's Cultural Matching Fund (CMF) secretariat present at the event officiated at 'The Big Picture' (HD Screen) at Suntec Singapore International Convention and Exhibition Centre.

### **Dedicated to Performing Arts Training**

The Möbius Fund is a dedicated, financial assistance fund made available to ITI's actor students. It attracts zero interest until a year after graduation and repayments by graduates will be channelled back to it, to enable the fund pool to continue benefitting subsequent cohorts. It was created in response to the challenges in supporting performing arts training.

General Manager of ITI, Ms Goh Su Lin, shares of the reasons for the fund, "Today is a very thrilling day for us, to officially launch the Möbius Fund, which is a [financial] resource for students to afford to complete their training, and the high living expenses here in Singapore, so that they can go on to make theatre that is relevant to their communities."

The next phase of Möbius Fund seeks the support of the public, and corporate partners.

ITI's students come from 17 countries – from Singapore, and as diverse countries as France, China, US, to Syria. The public can easily donate to a specific student or the fund in general through [Giving.Sg](#), [Give.Asia](#) or [Ammado](#).

[Download Press Release](#)

**INTERCULTURAL THEATRE INSTITUTE (ITI)** based in Singapore, trains

artists who want to make original, impactful contemporary theatre. ITI is shaped by theatre doyen Kuo Pao Kun's vision of intercultural learning that draws from a matrix of traditional theatre systems and modern theatre-making.

*Photo (from L to R): Goh Su Lin (ITI General Manager); lead donors Benson Puah, Pierre Lorinet and Leonardo Drago; T. Sasitharan (ITI Director); Chew Kheng Chuan (ITI Board Member); Arun Madhok (CEO, Suntec Singapore )*

---

## SIMILAR CONTENT


BY VALENTINA RICCARDI  
18 NOV 2014



Asian Intercultural Theatre Conference 2014|  
Interview with Phillip Zarrilli

FEATURES  
ASIA EUROPE SINGAPORE

BY VALENTINA RICCARDI  
29 OCT 2014



## Asian Intercultural Theatre Conference 2014 | Interview with T.Sasitharan

BY VALENTINA RICCARDI  
14 JAN 2018




## A look back at the Asian Intercultural Conference 2017 | Interview with T. Sasitharan

#ASEFCulture

INTERVIEWS  
ASIA EUROPE SINGAPORE

FROM - TO  
27 SEP 2024 - 27 SEP 2024



## Asia-Europe Cultural Festival: 2024 Closing Curtain | Pyo Chit Lin (My Darling)

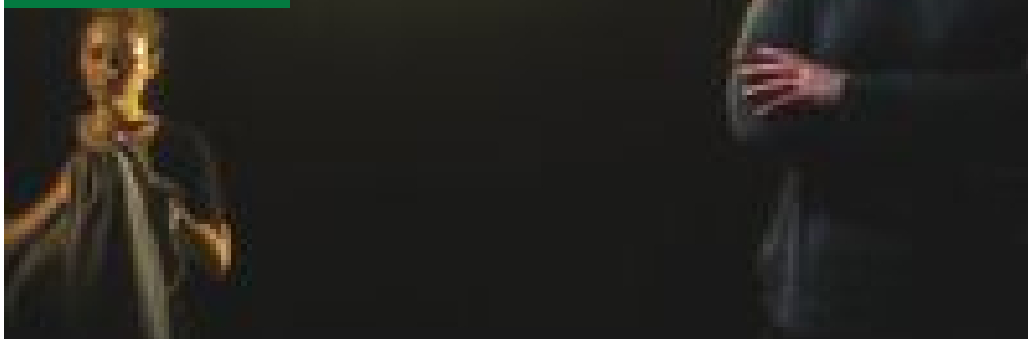
LING)

#ASEFCulture

EVENTS  
ASIA EUROPE FRANCE MALAYSIA MYANMAR SINGAPORE

BY VALENTINA RICCARDI  
06 NOV 2017

## Intercultural theatre practices | Interview with Frances Barbe



### INSIGHTS

ASIA AUSTRALIA SINGAPORE

### FROM - TO

27 NOV 2017 - 30 NOV 2017

ASEF culture360 media partner of the Asian  
Intercultural Conference 2017



### EVENTS

ASIA SINGAPORE

### COUNTRY

SINGAPORE

### THEME

ARTS EDUCATION

### DISCIPLINE

PERFORMING ARTS

## ABOUT ASEF CULTURE360

[culture360.asef.org](https://culture360.asef.org) brings Asia and Europe closer by providing information, facilitating dialogue and stimulating reflection on the arts and culture of the two regions.

**MORE ABOUT ASEF CULTURE360 | [FAQ](#) | [f](#) [X](#) [@](#)**

This website was created and maintained with the financial support of the European Union. Its contents are the sole responsibility of the Asia-Europe Foundation (ASEF) and do not necessarily reflect the views of the European Union.



About us  
Team  
Partners  
FAQ  
Brand guidelines  
How to partner with us  
Contact us  
#ASEFCulture