

[NEWS & EVENTS](#) > 'Infected Cities' discussions with cultural sector worldwide available online

POSTED ON
14 JUL 2020

WEBSITE

[HTTPS://DUTHCULTURE.NL/EN/...](https://dutchculture.nl/en/...)

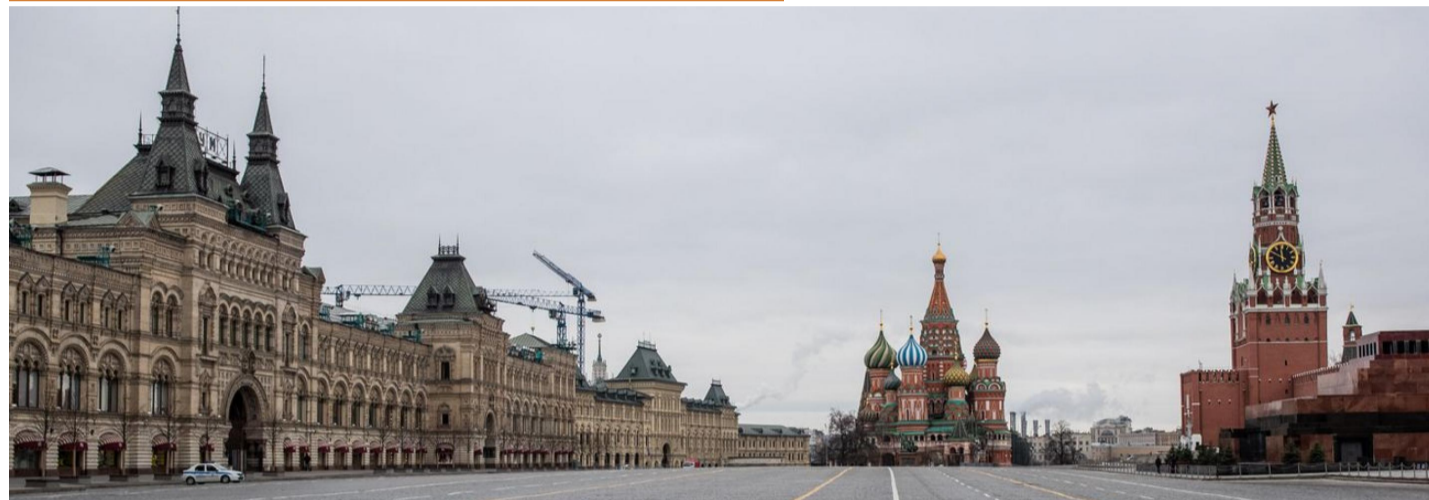
COUNTRIES

[CHINA](#) [INDONESIA](#) [JAPAN](#)
[NETHERLANDS](#)
[RUSSIAN FEDERATION](#)

THEMES

[COVID-19](#) [CREATIVE INDUSTRIES](#)
[CULTURAL RELATIONS](#)
[ECONOMY AND SOCIETY](#)

'Infected Cities' discussions with cultural sector worldwide available online



The 'Infected Cities' series of well informed live sessions from cities around the world on the impacts of the Covid-19 pandemic on the cultural sector ended in early July but you can catch up with the discussions. Infected Cities was organised by DutchCulture with Pakhuis de Zwijger in Amsterdam.

Infected Cities recordings of the sessions are available for the following countries in Asia and Europe:

Tokyo: <https://dutchculture.nl/en/events/infected-cities-9-tokyo>

Shanghai: <https://dutchculture.nl/en/events/infected-cities-6-shanghai>

Moscow: <https://dutchculture.nl/en/events/infected-cities-4-moscow>

Jakarta: <https://dutchculture.nl/en/events/infected-cities-2-jakarta>

as well as several other cities.

There was a final debate to conclude the series: <https://dutchculture.nl/en/infected-cities-10-bipoc-communities>

How does COVID-19 expose the inequalities within societies? And how do art and culture professionals contribute to the fight against racial inequality?

Similar content

POSTED ON
01 JUL 2020

Livecast from Tokyo
on impact of
coronavirus on cultural
sector

POSTED ON
15 DEC 2020

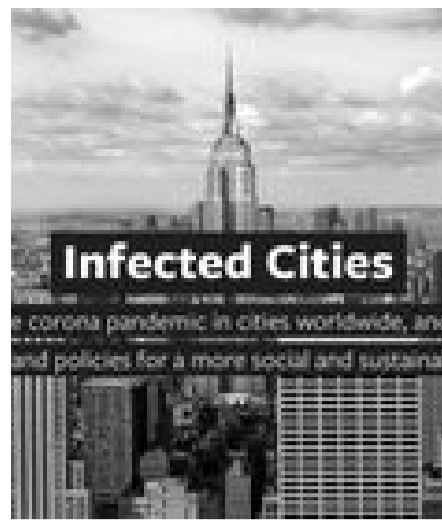
Infected Cities - new
livecasts on creative
resilience from cities in
Europe

POSTED ON
23 APR 2020

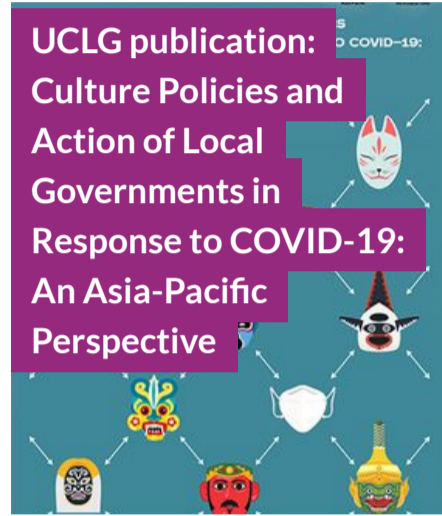
Global Webinar |
Contagious Cities:
Facing and
Understanding the
Pandemic



POSTED ON
07 DEC 2020



POSTED ON
22 JUN 2021



POSTED ON
21 AUG 2020



ABOUT ASEF **CULTURE360**

culture360.asef.org brings Asia and Europe closer by providing information, facilitating dialogue and stimulating reflection on the arts and culture of the two regions.

[MORE ABOUT ASEF CULTURE360](#) | [FAQ](#)

