

## NEWS & EVENTS > Flavor the best of Cinema in Dharamshala

FROM - TO  
01 NOV 2012 - 04 NOV 2012

# Flavor the best of Cinema in Dharamshala



Dharamshala, once a sleepy town in the foothills of the North Indian Himalaya, is now a global destination, the exile home of the Dalai Lama, the capital of the Tibetan diaspora, and more recently, an international cricket venue. All year round, thousands of visitors from all over India and around the world clog its narrow streets, drawn by the beauty of its mountain setting and its curious mix of local Gaddi, Tibetan and international cultures. Crowded with multi-cuisine restaurants, cafes, bookshops and video parlours, Dharamshala exudes a cosmopolitanism that belies its size. As filmmakers based in Dharamshala, Ritu Sarin and Tenzing Sonam, of **White Crane Films** have long believed that the town's unusual profile would make it a perfect location for an international film festival. It is with this in mind that they are launching **the first edition of the Dharamshala International Film Festival from 1st to 4th November 2012**. Their aim is to establish DIFF as a world-class film festival where filmmakers and film lovers can interact in an intimate, creative and informal way. Showcasing the best of recent Indian and world cinema, both fiction and documentary, they hope to bring meaningful cinema to the mountains and promote and encourage local filmmaking talent. **SCREENING SCHEDULE - TIBETAN INSTITUTE OF PERFORMING ARTS (TIPA) 1 November 2012 6 PM – Opening + Shahid (India; 2012; 123 min) 2 November 2012 10:30 AM – Hara Kiri:**

**Death of a Samurai** (Japan; 2011; 126 min) 1 PM – **Yangsi** (USA; 2012; 82 min) 3:30 PM – **Deool** (India; 2011; 135 min) 6.30 PM – **5 Broken Cameras** (Palestine/Israel; 2011; 90 min) 9 PM – **Pina** (Germany, 2011; 106 min) **3 November 2012** 10:30 AM – **Gattu** (India; 2012; 90 min) 12:30 PM – **When Hari Got Married** (India; 2012; 75 min) 2:30 PM – **Bunohan (Return to Murder)** (Malaysia; 2011; 97 min) 5 PM – **My Reincarnation** (USA; 2012; 82 min) 7.30 PM – **Special Outdoor Screening 4 November 2012** 11 AM – **Kshay** (92 min) 1 PM – **1/2 Revolution** (Denmark/Egypt; 2012; 72 min) 3 PM – **Senna** (UK; 2010; 106 min) 6 PM – **Miss Lovely** (India; 2012; 110 min) **CLUBHOUSE 2 November 2012** 10:30 AM – **José and Pilar** (117 mins) 1 PM – **Marina Abramović The Artist is Present** (104 min) 3:30 PM – **Special Event\*** 6:30 PM – **Shanghai** (India; 2012; 110 min) **3 November 2012** 10:30 AM – **Nostalgia for the Light** (Chile; 2010; 90 min) 12:30 PM – **Fable of the Fish** (Philippines; 2011; 84 min) 2:30 PM – **Oka!** (USA; 2011; 106 min) 5 PM – **China Heavyweight** (China; 2012; 94 min) **4 November 2012** 10 AM – **HaHaHa** (South Korea; 2010; 115 min) 1 PM – **Special Event\*** 3 PM – **Summer Pasture** (USA; 2010; 85 min) 6 PM – **Dile Ch Vasya Koi** (India; 2011; 86 min)

---

## SIMILAR CONTENT

FROM - TO  
30 NOV 2012 - 05 DEC 2012

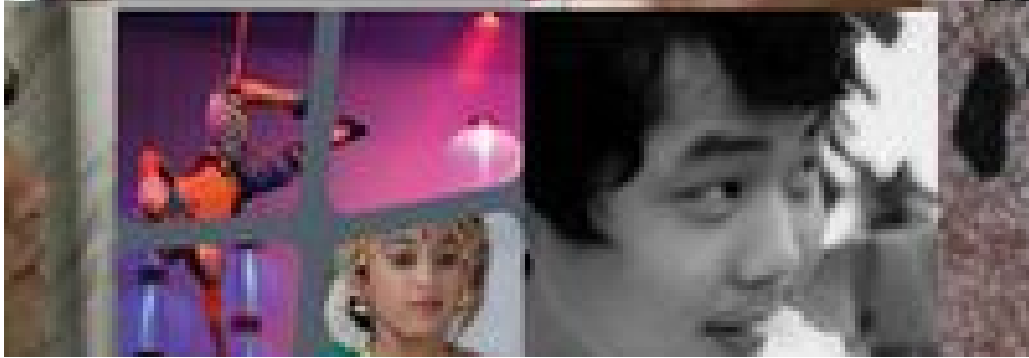


### EVENTS

DENMARK FINLAND NORWAY SWEDEN UNITED KINGDOM

POSTED ON  
01 DEC 2011

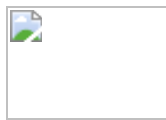
## Top 10 Asia-Europe culture360.org videos 2011



**NEWS**  
ASIA EUROPE

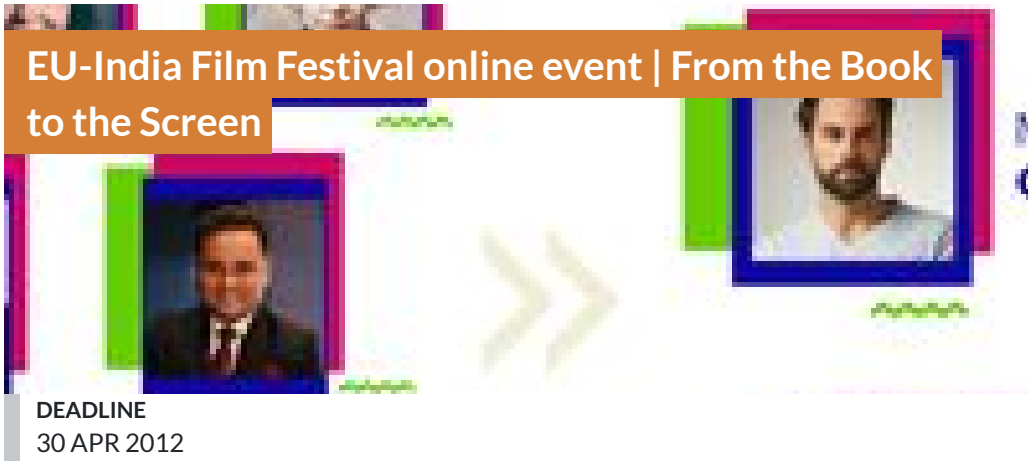
**DEADLINE**  
31 DEC 2010

## Hong Kong International Film Festival



**FROM - TO**  
24 NOV 2020 - 24 NOV 2020

## EU-India Film Festival online event | From the Book to the Screen



DEADLINE  
30 APR 2012

## Call for participants: AFA 2012



OPPORTUNITIES  
ASIA EUROPE KOREA

POSTED ON  
18 APR 2012

## When Strangers Meet | Visions of Asia and Europe in Film



#ASEFCulture

NEWS  
AUSTRALIA CHINA FRANCE INDIA INDONESIA ITALY JAPAN KOREA NETHERLANDS  
NEW ZEALAND PHILIPPINES

## WEBSITE

[HTTP://WWW.DIFF.CO.IN/](http://www.diff.co.in/)

## COUNTRIES

INDIA INTERNATIONAL

## DISCIPLINE

FILM

## ABOUT ASEF CULTURE360

[culture360.asef.org](http://culture360.asef.org) brings Asia and Europe closer by providing information, facilitating dialogue and stimulating reflection on the arts and culture of the two regions.

**MORE ABOUT ASEF CULTURE360 | [FAQ](#) | [f](#) [X](#) [@](#)**

This website was created and maintained with the financial support of the European Union. Its contents are the sole responsibility of the Asia-Europe Foundation (ASEF) and do not necessarily reflect the views of the European Union.



About us  
Team  
Partners  
FAQ  
Brand guidelines  
How to partner with us  
Contact us  
#ASEFCulture