

Privacy Settings

We use cookies to optimize our website and our service.

- ☒ Functional
- ☒ Statistics
- ☒ Marketing

Save

Functional only

Accept all

COUNTRIES
[JAPAN](#) [UNITED KINGDOM](#)

THEMES
[HERITAGE](#) [MUSEUMS](#)

Warriors" | United Kingdom



The [Oriental Museum at Durham University](#), UK, an ASEMUS

member, is presenting an exhibition entitled "[The Shogun's Cultured Warriors](#)" between 7 June and 27 November 2016. The exhibition explores **the role of the samurai class as patrons and producers of the arts, together with their legacy in Japan and in the West today**. The samurai were the military class of Japan, who developed from provincial warriors into the ruling elite. They were a powerful force in Japan for more than six centuries and so had a profound effect on military and political life. High-ranking warriors were also expected to develop their literary skills and they played an active role as patrons of the arts. "The Shogun's Cultured Warriors" has been designed to support **a conference entitled "[400th Anniversary of the Death of the first Tokugawa Shogun: the Life and Legacy of Tokugawa Ieyasu](#)"**, which will take place in Durham on 7-9 June. 2016 marks 400 years since the death of the first shogun, Tokugawa Ieyasu, who founded the Tokugawa shogunate (1603-1868), considered one of the key turning points in Japanese history. To this end, the conference will bring together experts on Japanese history, religion, and material culture to commemorate, explain, and explore Ieyasu's career and legacy. The exhibition "The Shogun's Cultured Warriors" has been created with support from Durham University's Centre for Visual Arts and Culture. For **additional information about the exhibition**, please visit <https://www.dur.ac.uk/oriental.museum/whatson/details/?id=30031>

Similar content

POSTED ON
19 JUN 2013

Spain and Japan
celebrate 400 years of
exchanges



POSTED ON
25 NOV 2021

Paris | Ultimate
Combat: Martial Arts in
Asia - exhibition



POSTED ON
26 JUL 2021

Oxford | Tokyo: Art &
Photography



POSTED ON
25 MAR 2012

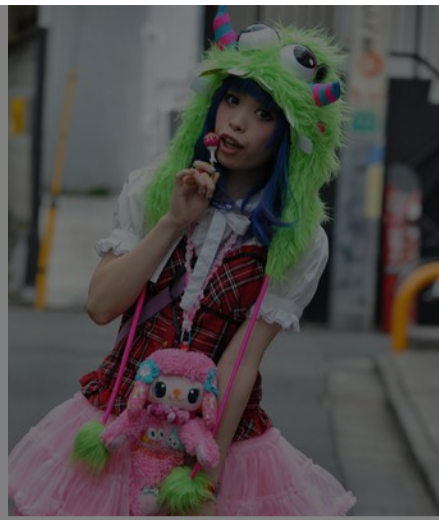
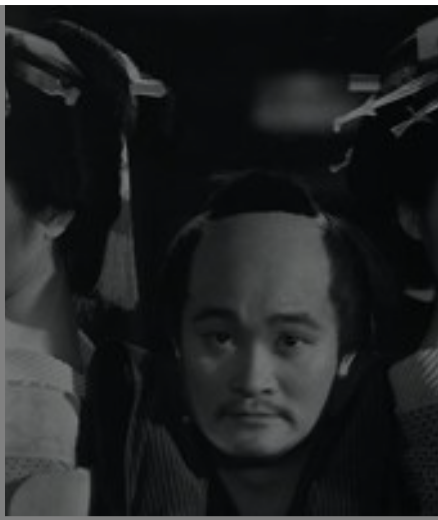
Hong Kong 2012
Diary: Tribute - The
Aesthetics of
Discordance:
Kawashima Yuzo

POSTED ON
29 MAY 2017

Netherlands | COOL
JAPAN exhibition

POSTED ON
21 JAN 2016

Shakespeare in China
and the world



ABOUT ASEF CULTURE360

culture360.asef.org brings Asia and Europe closer by providing information, facilitating dialogue and stimulating reflection on the arts and culture of the two regions.

[MORE ABOUT ASEF CULTURE360](#) | [FAQ](#)

